

# EZ IQ

## Installation Guide

### Introduction

This EZ IQ™ Installation Guide describes how to install and set up the EZ IQ data system software. When connected to a 3000 Micro GC, EZ IQ provides instrument control, data acquisition, analysis, and processing functionality.

### Other Document Resources

In addition to this EZ IQ Installation Guide, refer to the *074-538 EZ IQ Operation Manual* and *EZ IQ Online Help* for more information regarding EZ IQ functionality and operation.

### Computer Requirements

Before installing EZ IQ onto a computer, make sure the computer meets the hardware and software requirements shown in [Table 1](#). See also [Important Notes](#).

Table 1 Computer Requirements

| Type                             | Microsoft® Operating System                                | CPU             | RAM <sup>1</sup> | Disk Space                   | Network                     | Graphics              |
|----------------------------------|--|-----------------|------------------|------------------------------|-----------------------------|-----------------------|
| <b>Minimum Configuration</b>     | XP Pro. SP3 with .Net 3.0 or Vista Business SP1            | 2 GHz           | 2 GB             | 10 GB                        | See instrument requirements | 1024 x 768            |
| <b>Recommended Configuration</b> | XP Pro. SP3 with .Net 3.0 Or 3.5 SP1 or Vista Business SP1 | Dual Core 2 GHz | 2 GB             | 10 GB and >60% free HD space | 100 Mbps or Higher          | 1280 x 1024 or higher |

<sup>1</sup> RAM total available memory for EZ IQ including the Operating system, but no other application.

### Important Notes

- ◆ Microsoft TCP/IP networking is required. WAN's (wide area networks) are not supported.
- ◆ Disk Space requirements should be adjusted based on archival periodicity. Each analysis will generate a data file size of approximately 200 Kb. INFICON recommends a minimum disk space size equalling one year of data file archival plus the disk space required by the operating system (refer to [Table 1](#)).
- ◆ Localized versions of EZ IQ are supported on a Localized Language version of Windows® using default system fonts (Chinese; Simsun; Japanese; MS UI Gothic).

## EZ IQ

### Installation Guide

#### Driver Support

Micro GC methods and data defined and generated under the Classic Driver cannot be migrated to the Enhanced Driver. Both driver types can be installed on the same computer, but cannot simultaneously control the same 3000 Micro GC. See the *EZ IQ Online Help* for additional information.

The Classic Driver is supported for backward compatibility. However, it is recommended to adopt the Enhanced Driver whenever possible.

#### Installing EZ IQ

To install EZ IQ onto a Windows PC computer:

- 1 Insert the EZ IQ Installation CD into the PC CD-ROM drive.
- 2 The **CD Installer** dialog box will display. See [Figure 1](#). If it does not display, double-click **CDInstaller.exe** under the CD-ROM root drive.
- 3 Click **Install EZ IQ** to start the installation.

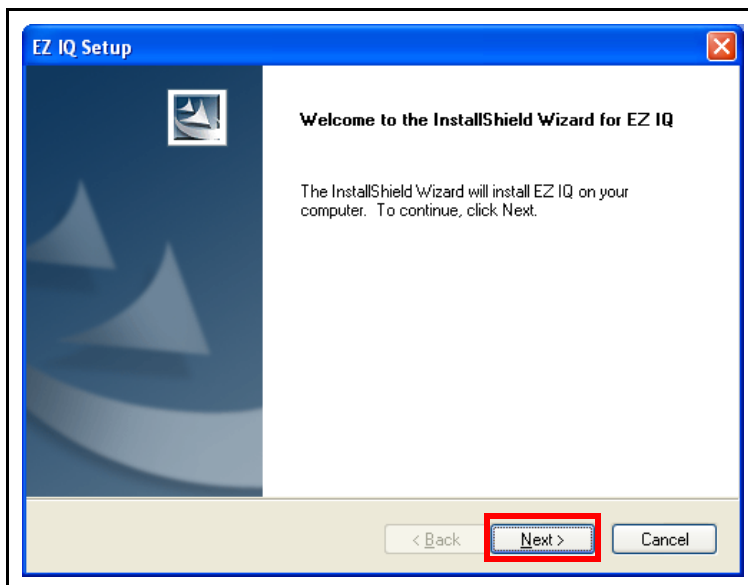
Figure 1 CD Installer Dialog Box



## EZ IQ Installation Guide

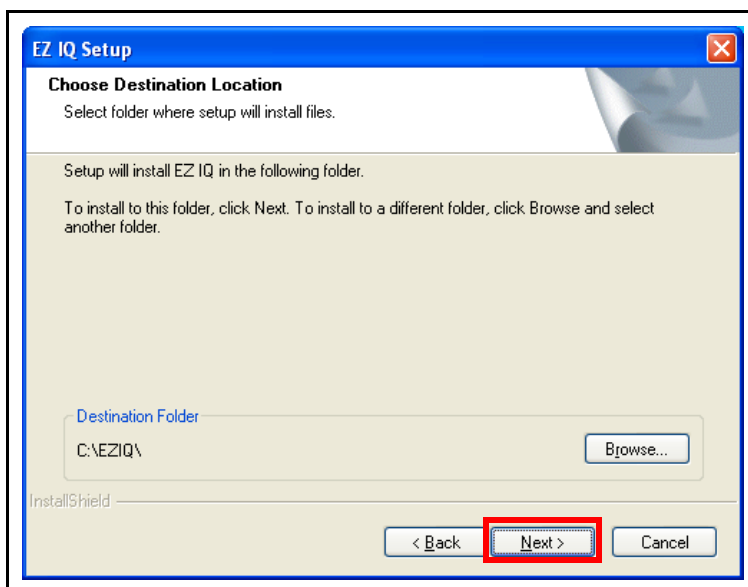
- 4 The **EZ IQ Setup - Welcome** dialog box will display. See [Figure 2](#). Click **Next >**.

Figure 2 Figure EZ IQ Setup - Welcome Dialog Box



- 5 The **EZ IQ Setup - Choose Destination Location** dialog box will display. See [Figure 3](#). Choose a EZ IQ software installation destination folder. It is recommended to use the default destination folder **C : \EZIQ\**. Click **Next >**.

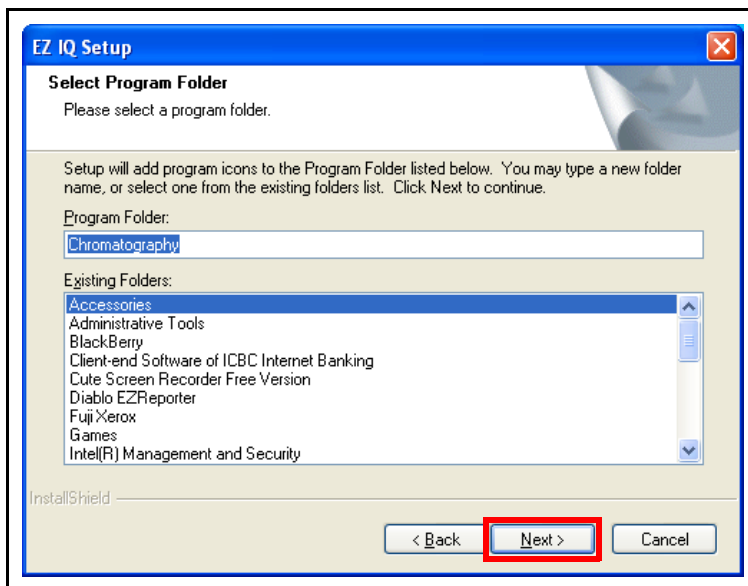
Figure 3 EZ IQ Setup - Choose Destination Location Dialog Box



## EZ IQ Installation Guide

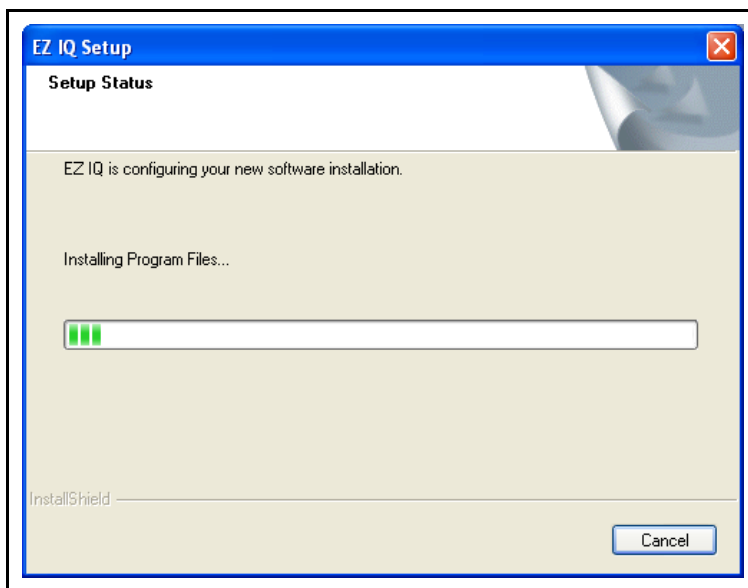
- The **EZ IQ Setup - Select Program Folder** dialog box will display. Type in a name for the **Program Folder**. This name will be shown in the (Windows) **Start >> All Programs** menu. It is recommended to use the default **Chromatography** program folder name. Click **Next >**.

Figure 4 EZ IQ Setup - Select Program Folder Dialog Box



- The **EZ IQ Setup - Setup Status** dialog box will display.

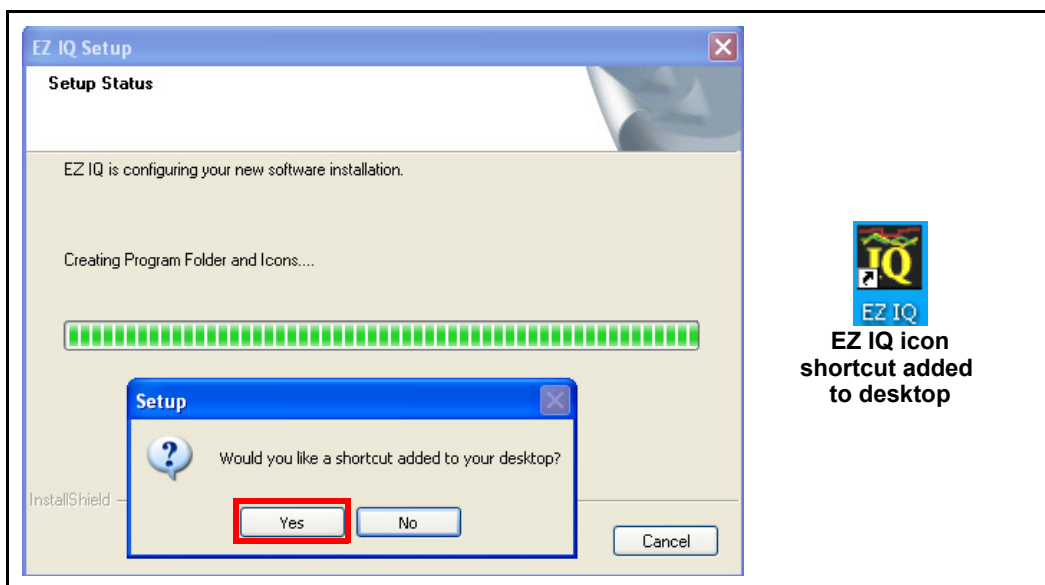
Figure 5 EZ IQ Setup - Setup Status Dialog Box



## EZ IQ Installation Guide

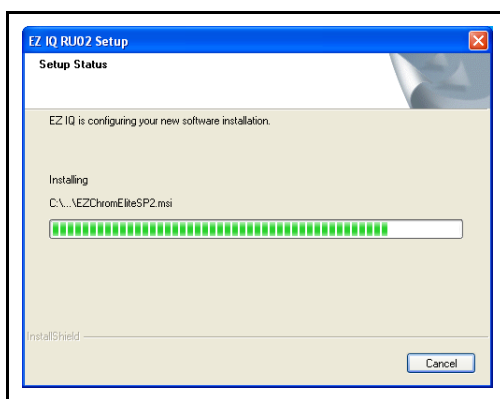
- 8 When prompted, click **Yes** to create an EZ IQ program desktop shortcut. See [Figure 6](#).

Figure 6 EZ IQ Setup - Setup Status - Desktop Shortcut Dialog Box and Icon



- 9 Various EZ IQ installation dialog boxes will display. Some are shown in [Figure 7](#) through [Figure 11](#).

Figure 7 EZ IQ RU02 - Setup Status Dialog Box



**EZ IQ**  
Installation Guide

Figure 8 EZ IQ 3.3.2 SP2 Setup - Setup Status Dialog Box

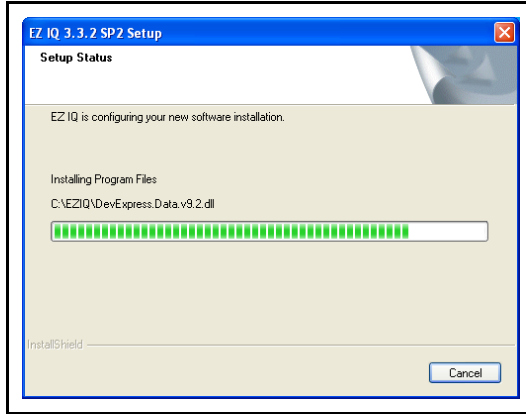


Figure 9 EZ IQ Setup - Cmd Screen

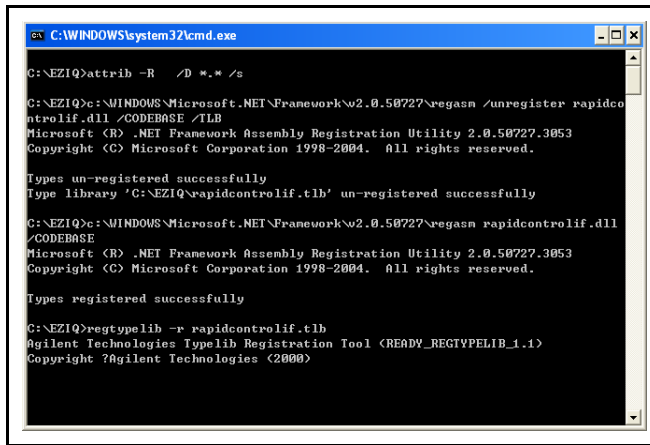
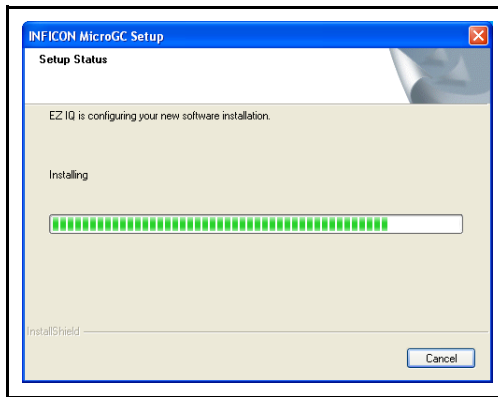
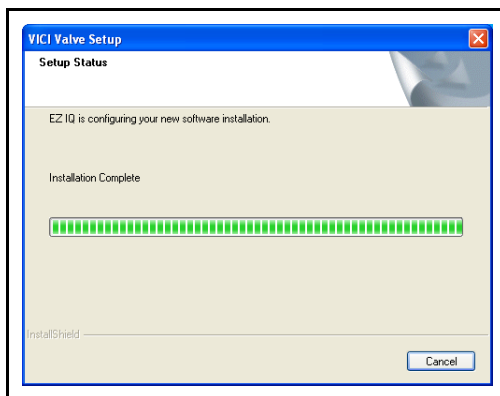


Figure 10 INFICON MicroGC Setup - Setup Status Dialog Box



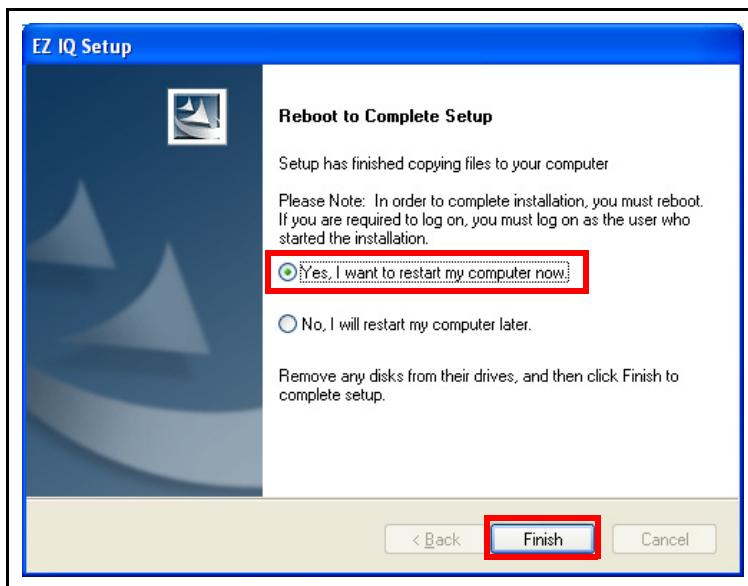
## EZ IQ Installation Guide

Figure 11 VICI Valve Setup - Setup Status Dialog Box



- 10** When the installation is complete, the **EZ IQ Setup - Reboot to Complete Setup** dialog box will be displayed. See Figure 12. Select **Yes, I want to restart my computer now**. Click **Finish**.

Figure 12 EZ IQ Setup - Reboot to Complete Setup Dialog Box

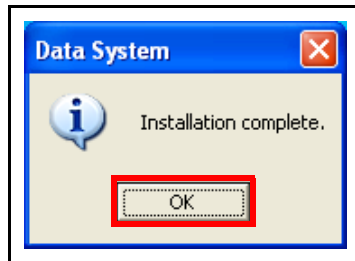


## EZ IQ

## Installation Guide

- 11** After the computer has rebooted, the **Data System** dialog box will display. See [Figure 13](#). Click **OK** to complete the installation.

Figure 13 *Sata System – Installation Complete Dialog Box*

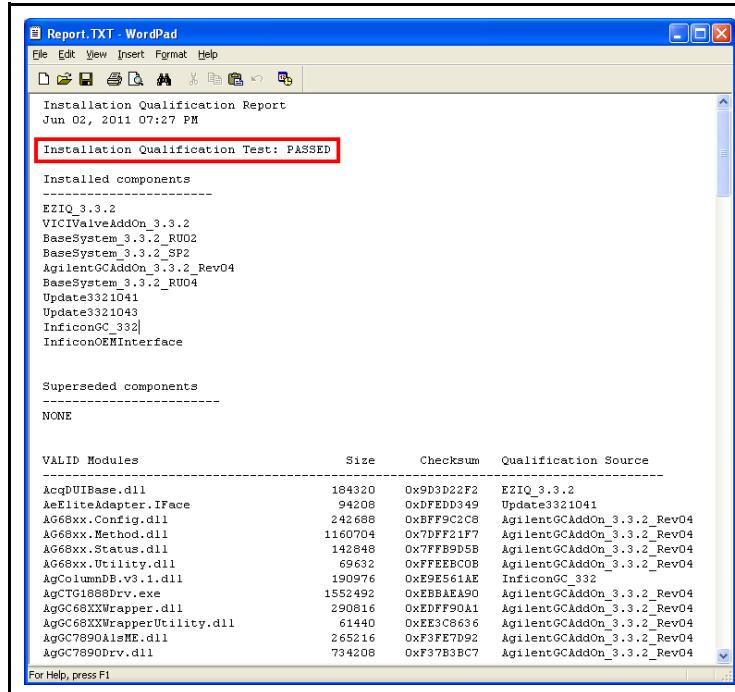


### EZ IQ Installation Qualification

EZ IQ provides a tool to qualify the installation.

- 1** Select (Windows) **Start >> Chromatography >> Installation Qualification (IQ)**.
- 2** A **Report.TXT** file will be generated and displayed. If the installation is qualified, **Installation Qualification Test: PASSED** will appear. See [Figure 14](#).

Figure 14 *EZ IQ Installation Qualification Test Passed*



- 3** If the test has not passed, reinstall the software. If the problem continues, contact INFICON.



## EZ IQ

### Installation Guide

#### Connecting EZ IQ with 3000 Micro GC

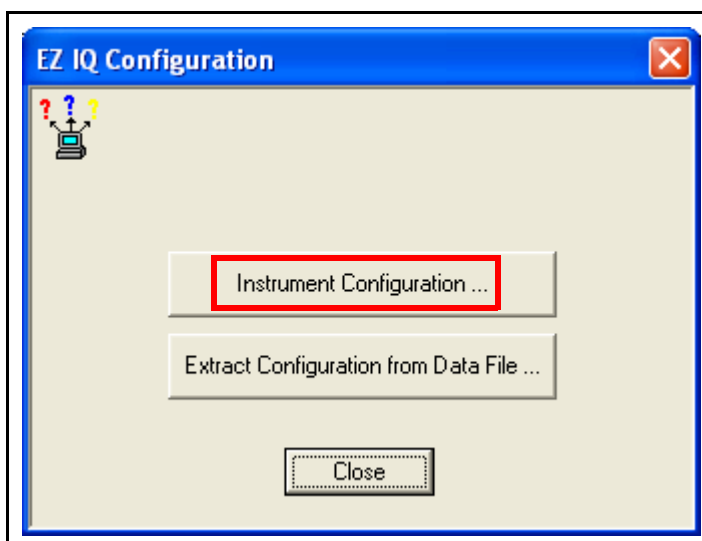
Before connecting an EZ IQ data system with a 3000 Micro GC, make sure:

- ◆ EZ IQ installation is completed successfully on a designated PC computer.
- ◆ The 3000 Micro GC is powered up.
- ◆ The EZ IQ computer and the 3000 Micro GC are physically connected via Ethernet, either through direct connection by crossover cable or through a LAN network.
- ◆ If the EZ IQ computer and the 3000 Micro GC are connected via LAN network, they should either be configured in the same IP subnet, or properly routed through a corporate IP router.

To connect an EZ IQ data system with a 3000 Micro GC:

- 1 Select (Windows) **Start >> All Programs >> Chromatography >> EZ IQ Config.**
- 2 The **EZ IQ Configuration** dialog box will display. See [Figure 15](#). Click **Instrument Configuration...**

Figure 15 EZ IQ Configuration Dialog Box

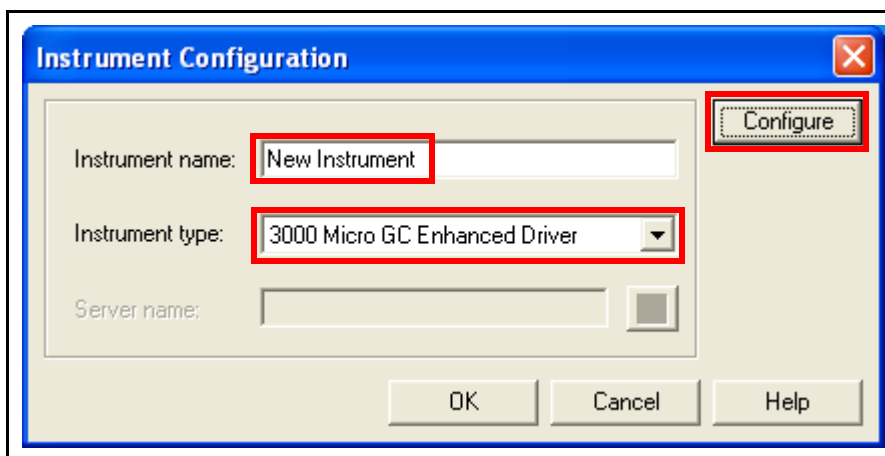


Follow steps below for the Enhanced Driver. For the Classic Driver, see the appropriate chapter in the *074-538 EZ IQ Operating Manual*.

## EZ IQ Installation Guide

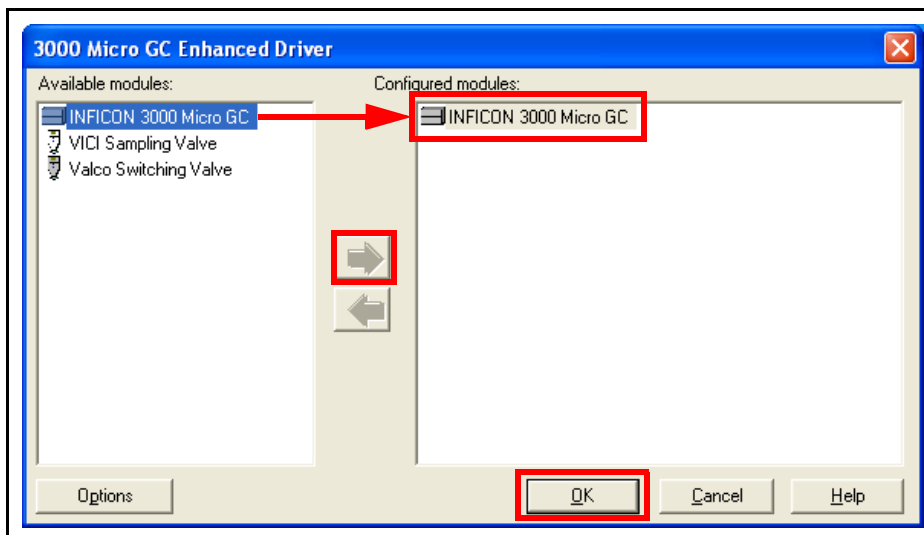
- 3 In the **Instrument Configuration** dialog box, see [Figure 16](#), type an **Instrument name:**, select **Instrument type: 3000 Micro GC Enhanced Driver**, and click **Configure**.

Figure 16 Instrument Configuration Dialog Box



- 4 The **3000 Micro GC Enhanced Driver** dialog box will appear, see [Figure 17](#). Select the **INFICON 3000 Micro GC** icon. Click the → arrow to move the **INFICON 3000 Micro GC** icon from **Available modules** to **Configured modules**. Click **OK**.

Figure 17 3000 Micro GC Enhanced Driver Dialog Box



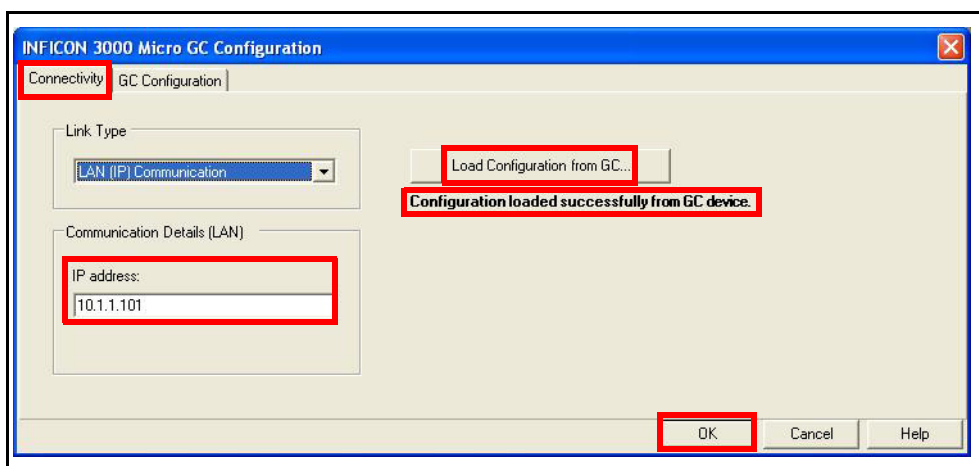
- 5 Double-click the **INFICON 3000 Micro GC** icon in the **Configured modules** pane to open the **INFICON 3000 Micro GC Configuration** display. See [Figure 18](#).

## EZ IQ

## Installation Guide

- 6 In the **INFICON 3000 Micro GC Configuration** dialog box, select the **Connectivity** tab. Enter the IP Address of the 3000 Micro GC into the **IP Address:** field. Click **Load Configuration from GC...** Once the 3000 Micro GC configuration has been properly loaded into EZ IQ, a **Configuration loaded successfully from GC device** message will be displayed.

Figure 18 Set IP Address and Load Configuration from GC Dialog Box



- 7 Click **OK** to exit the **INFICON 3000 Micro GC Configuration** dialog box.
- 8 Click **OK** to exit the **INFICON 3000 Micro GC Enhance Driver** dialog box.
- 9 Click **OK** to exit the **Instrument Configuration** dialog box.
- 10 Click **Close** to exit the **EZ IQ Configuration** dialog box.

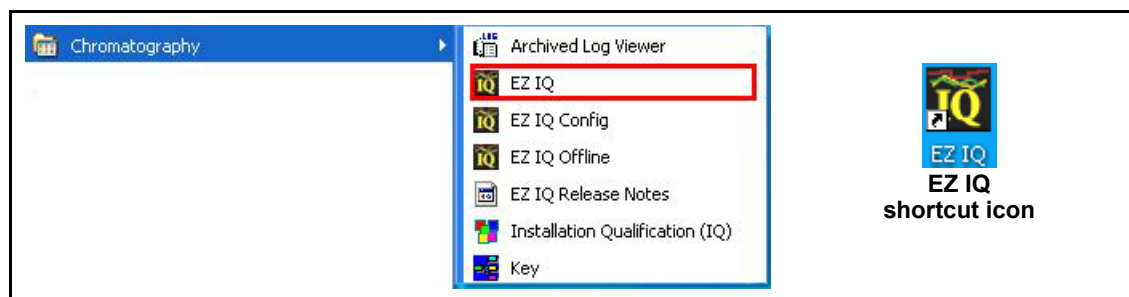
## EZ IQ

### Installation Guide

#### Starting EZ IQ

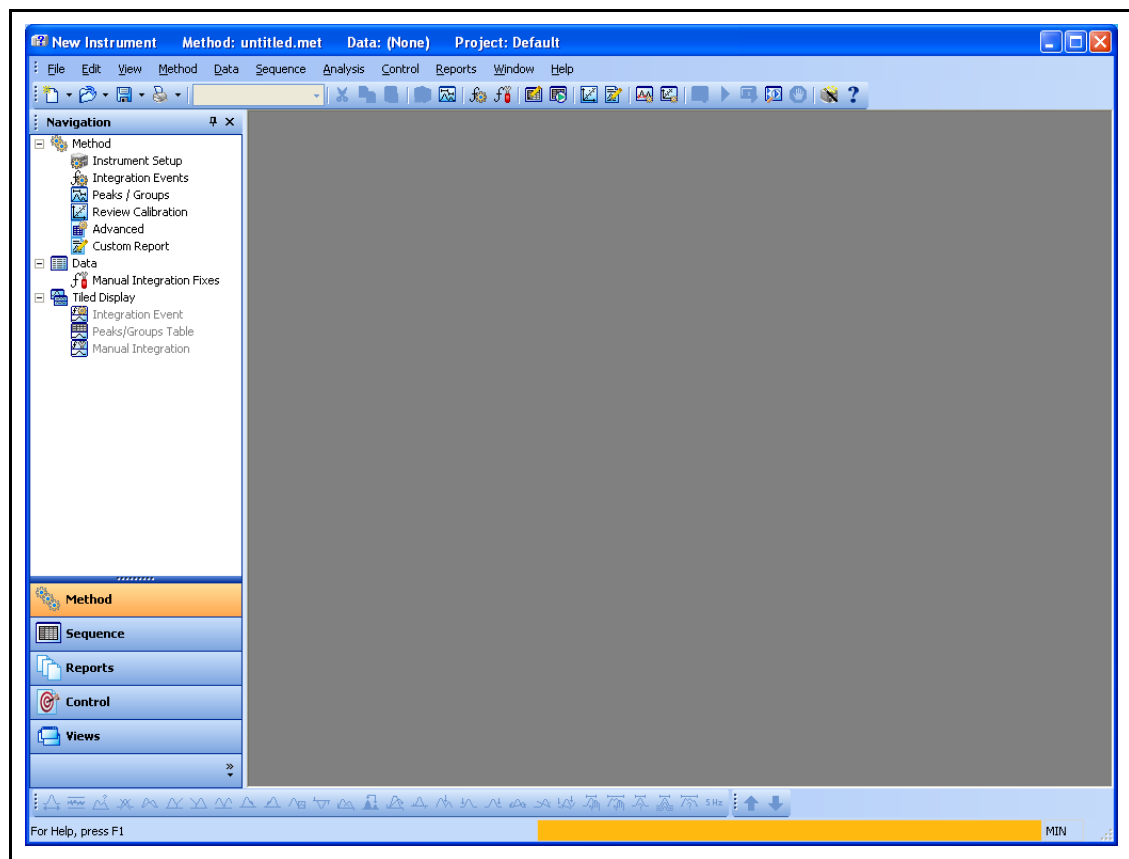
Run the EZ IQ data system by selecting (Windows) **Start >> Programs >> Chromatography >> EZ IQ**. Alternatively you can double-click on the EZ IQ shortcut icon on the Windows desktop. See [Figure 19](#).

Figure 19 Running EZ IQ



The EZ IQ User Interface will be displayed. See [Figure 20](#).

Figure 20 EZ IQ User Interface



## EZ IQ

### Installation Guide

From the EZ IQ User Interface, all aspects of instrument setup, method development, sequence development, calibration, data acquisition, processing, and reporting can be accessed. See the *074-538 EZ IQ Operation Manual* and *EZ IQ Online Help* for additional information.



[www.inficon.com](http://www.inficon.com)    [reachus@inficon.com](mailto:reachus@inficon.com)

Due to our continuing program of product improvements, specifications are subject to change without notice.  
All trademarks are the property of their respective owners.