

TECHNICAL NOTE

Using Q-pod with Windows® 7 and 8, 64-bit Operating Systems

INTRODUCTION

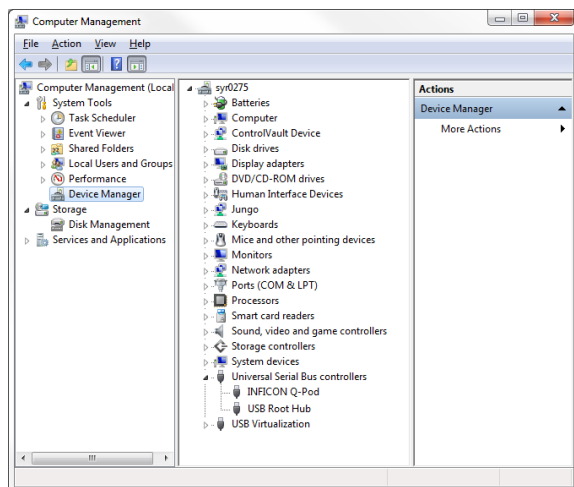
Q-pod is compatible with Windows 7 and 8, 64-bit operating systems. However, due to Windows 7 and 8, 64-bit operating systems having the Driver Signature Enforcement inherent in operation, Q-pod is not always recognized by the operating system when following the typical installation steps.

The original installation drivers supplied with Q-pod are not signed. Windows 7 and 8, 64-bit operating systems do not recognize unsigned drivers and block the installation. This creates an inability to find connected Q-pods using the supplied Q-pod software.

Q-POD INSTALLATION WITH WINDOWS 7 AND 8, 64-BIT

When using a computer with a Windows 7 or 8, 64-bit operating system and Q-pod, follow the instructions below. This procedure will allow the operating system to recognize and begin to read Q-pod.

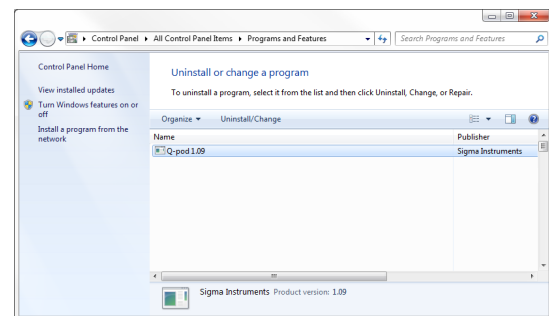
- 1 Open the Device Manager of the computer. Confirm that Q-pod is not a device that is listed. If **INFICON Q-Pod** is displayed, right-click and uninstall **INFICON Q-Pod**.



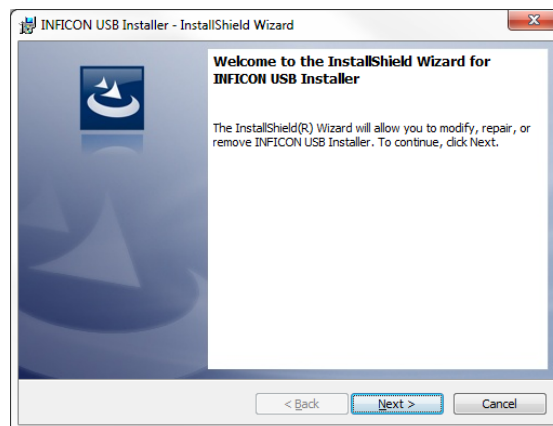
Be sure to select the checkbox on the dialog window to **Delete the driver software for this device**.



- 2 Uninstall the Q-pod 1.09 software from the control panel.



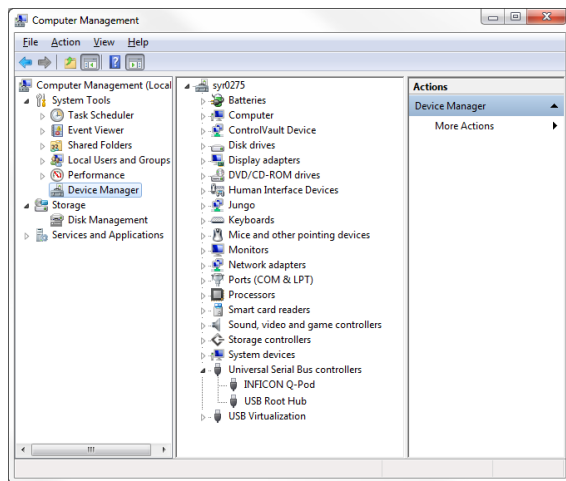
- 3 Download the [USB Installer v1.8.0](#) using the link, or the Discontinued INFICON Products page of the website, www.inficon.com.
- 4 Install the USB Installer v1.8.0.



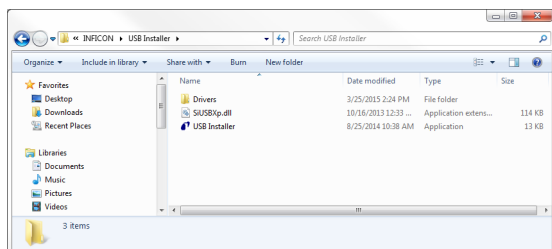
- 5 Install the Q-pod software (v.1.09).



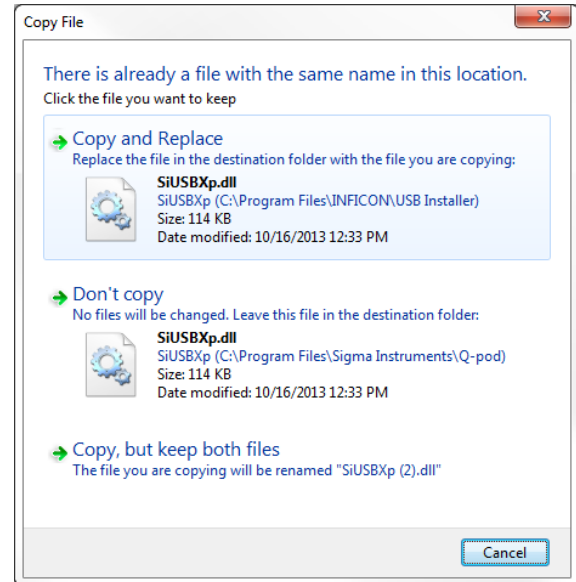
- 6 Connect Q-pod.
7 Open the Device Manager of the computer. Confirm that **INFICON Q-Pod** is displayed under USB devices.



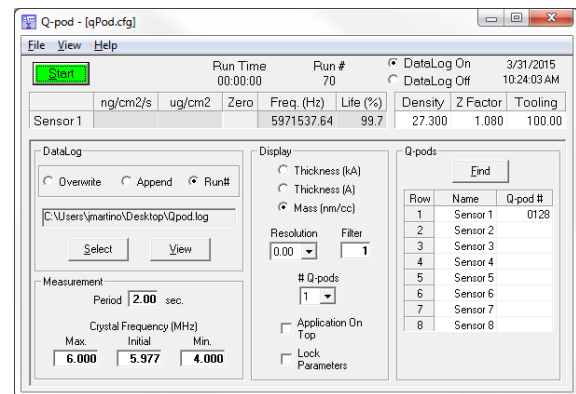
- 8 Open **C:\Program files(x86)\INFICON\USB** installer.



- 9 Copy the file **SiUSBp.dll**.
10 Paste this file into **C:\Program files(x86)\Sigma Instruments\Q-pod**. Replace the file by that same name in this folder.



- 11 Run the Q-pod software and confirm successful operation. On the Q-pod software main window, the serial number of the Q-pod (**Q-pod #**) should be displayed next the sensor name (**Name**) in the Q-pod's pane.



www.inficon.com reachus@inficon.com

Due to our continuing program of product improvements, specifications are subject to change without notice. All trademarks are the property of their respective owners.