

O P E R A T I N G M A N U A L

IC/5 Off-Line Editor

IPN 074-254





O P E R A T I N G M A N U A L

IC/5 Off-Line Editor

IPN 074-254C

TWO TECHNOLOGY PLACE
EAST SYRACUSE, NY 13057-9714 USA

ALTE LANDSTRASSE 6
LI-9496 BALZERS, LIECHTENSTEIN

BONNER STRASSE 498
D-50968 COLOGNE, GERMANY

Phone: +315.434.1100
Fax: +315.437.3803
Email: reachus@inficon.com

Phone: +423.388.3111
Fax: +423.388.3700
Email: reach.liechtenstein@inficon.com

Phone: +49.221.347.40
Fax: +49.221.347.41429
Email: reach.germany@inficon.com

VISIT US ON THE WEB AT www.inficon.com

©2000 INFICON

The trademarks of the products mentioned in this manual are held by the companies that produce them.

Adobe®, the Adobe logo, Acrobat®, the Acrobat logo, Adobe Acrobat Reader™ are trademarks of Adobe Systems Incorporated.

American Online® is a registered trademark of American Online, Inc.

CompuServe® is a registered trademark of CompuServe, Inc.

Microsoft®, Windows®, and MS-DOS are registered trademarks of Microsoft Corporation.

All other brand names, product names or trademarks belong to their respective holders.

The information contained in this manual is believed to be accurate and reliable. However, INFICON assumes no responsibility for its use and shall not be liable for any special, incidental, or consequential damages related to the use of this product.

©2003 All rights reserved.

Reproduction or adaptation of any part of this document without permission is unlawful.

Table Of Contents

Chapter 1

Overview

1.1	Introduction	1-1
1.2	Electronic Document Distribution	1-1

Chapter 2

Installation Requirements

2.1	Personal Computer	2-1
2.2	DOS Shell	2-1
2.3	Floppy Disk Drive	2-2

Chapter 3

IC/5 versus Off-Line Editor

3.1	Introduction	3-1
3.2	Configuration File	3-1
3.3	Softkey Functionality	3-1
3.4	File Storage	3-1
3.5	Keyboard Special Function Keys	3-2
3.6	Lock Codes	3-2
3.7	Floppy Disk Access Code and Print Screen Number Parameters	3-2
3.8	Print Screen	3-2

Chapter 4

Function Keys

4.1	Special Key Functions	4-1
4.2	Text Editing (User Messages, File and I/O Names)	4-1

Index

This page is intentionally blank.

Chapter 1 Overview

1.1 Introduction

The IC/5 Off-Line Editor software provides the convenience of programming or modifying the IC/5 Thin Film Deposition Controller's parameters at a personal computer. The IC/5 Off-Line Editor simulates the IC/5 displays, therefore the programming process is very similar to the IC/5 itself.

The parameters are stored in configuration files which may be transferred into an IC/5 using a 720 Kbyte or 1.44 Mbyte floppy diskette. The IC/5 must contain the floppy disk drive option (IPN 760-023-G1).

The DOS based IC/5 Off-Line Editor software is comprised of the OFFLINE.EXE executable file. It can be run from DOS or from a DOS window in Windows® 3.x or Windows 95.

The computer keyboard or a mouse can be used to move about the program.

NOTE: Instructions for programming the IC/5 and complete descriptions of each parameter are included in the IC/5 Operator's Manual (IPN 074-237).

1.2 Electronic Document Distribution

This manual is available as a PDF document. The PDF file is named offlinedt.pdf and is located on the diskette containing the IC/5 Off-Line Editor software.

To view the PDF version of this manual, you must have the appropriate Adobe® Acrobat® Reader installed on your computer. The Adobe Acrobat Reader™ may be downloaded directly from Adobe through the following:

World Wide Web. <http://www.adobe.com>

America Online® adobe

CompuServe® go adobe

Refer to the information provided by your service provider for instruction on how to download files. Refer to the information supplied by Adobe for instruction on how to use the Acrobat Reader.

This page is intentionally blank.

Chapter 2

Installation Requirements

2.1 Personal Computer

- ◆ 80286 CPU or better with a minimum of 490 Kbytes of free conventional memory.
- ◆ MS-DOS® Version 3.0 or higher.
- ◆ 720 Kbytes or 1.44 Mbytes Floppy Disk Drive.
- ◆ VGA monitor. (The IC/5 Off-Line Editor uses a VGA graphics mode.)
- ◆ (Optional) Logitech or Microsoft Mouse. *The DOS mouse driver must be loaded, even if executing the Off-Line Editor program from a DOS window, when running Windows.*

2.2 DOS Shell

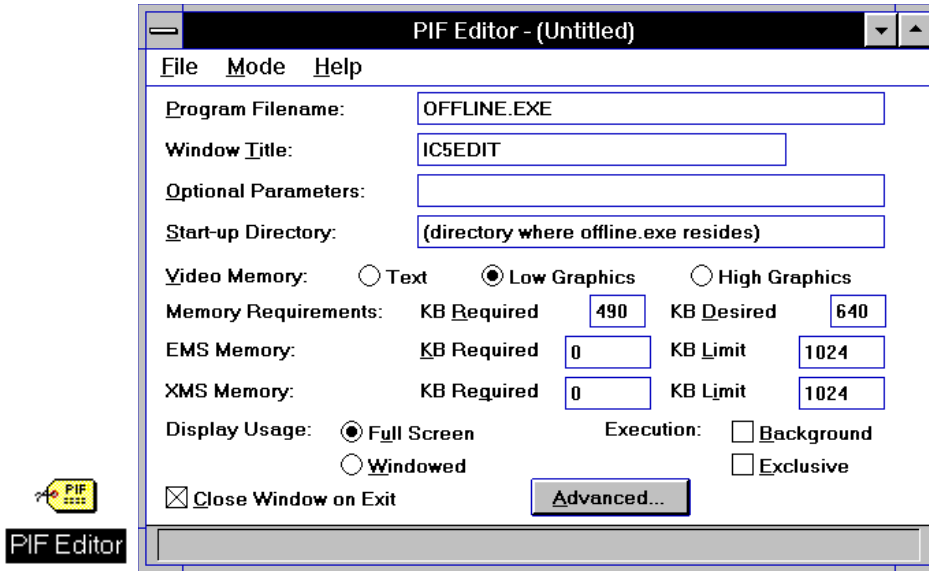
When operating in the Windows environment and using a DOS shell to run the IC/5 Off-Line Editor, the Windows PIF (Program Information File) must have:

- ◆ its VIDEO MEMORY parameter set to either LOW GRAPHICS or HIGH GRAPHICS.
- ◆ Memory Requirements KB Required should be set to 490.
- ◆ its DISPLAY USAGE parameter must be set to FULL SCREEN.
- ◆ its CLOSE WINDOW ON EXIT parameter must be checked.

The PIF Editor is displayed by selecting the PIF Editor icon, located in the Main screen. See PIF Editor Icon and PIF Editor Screen.

NOTE: Refer to the Microsoft Windows User's Guide or the Windows Online Help documentation for instruction on how to set up an MS-DOS application and for direction on how to modify a PIF.

Figure 2-1 PIF Editor Icon and PIF Editor Screen



2.3 Floppy Disk Drive

The Floppy Disk Drive Option (IPN 760-023-G1) must be installed in the IC/5 Thin Film Deposition Controller in order to transfer a configuration file from the personal computer to the IC/5.

Chapter 3

IC/5 versus Off-Line Editor

3.1 Introduction

The following sections explain the operational differences between the IC/5 and the Off-Line Editor

3.2 Configuration File

When saving a configuration file using the IC/5, the following message is shown next to the file name.

Stored at XX:XX on mm-dd-yyyy, IC/5 Ver X.XX

When saving a configuration file using the IC/5 Off-Line Editor, you may edit this message in order to describe the configuration file. The modified message is displayed whenever this configuration file is listed on the IC/5 display.

3.3 Softkey Functionality

The **Floppy Disk** softkey function (F4) used in the IC/5 Program screen is replaced with the **Files** softkey function in the Off-Line Editor.

3.4 File Storage

The IC/5 only allows files to be stored or retrieved from the floppy diskette root directory.

The Off-Line Editor allows files to be stored onto the root directory or sub-directories or to a different disk drive using the **Change Drive/Directory** function.

NOTE: If you are using a personal computer with only one floppy disk drive installed and you attempt to change between drives A: and B:, the **Insert diskette for drive X: and press any key when ready** DOS message will appear. Press and release any key on the personal computer's keyboard to continue. This message will be cleared when the display is redrawn.

3.5 Keyboard Special Function Keys

Certain keyboard keys have special functions. These keys are described in [Chapter 4, Function Keys](#). They are also listed on the PROGRAM display of the Off-Line Editor.

NOTE: The IC/5 supports only a subset of the characters found on the personal computer keyboard. Alphanumeric characters not supported by the IC/5 can not be entered through the computer keyboard. The character set supported by the IC/5 is: A through Z, 0 through 9, !, #, ±, %, &, and -.

3.6 Lock Codes

When a lock code is entered into the IC/5, it is hidden from view and displayed as XXXX on the Utility display. The IC/5 Off-Line Editor will display the actual value of any lock code present and allow it to be changed.

3.7 Floppy Disk Access Code and Print Screen Number Parameters

The Floppy Disk Access Code and Print Screen Number parameters are not saved to or restored from a configuration file and therefore cannot be entered using the IC/5 Off-Line Editor.

3.8 Print Screen

The PC Print Screen function does not work while executing the IC/5 Off-Line Editor software. The Off-Line Editor software and the IC/5 use a graphics package for the displays. A screen capture program can be used to obtain a print screen of the IC/5 Off-Line Editor displays.

Chapter 4

Function Keys

4.1 Special Key Functions

Key	Function
Arrows	Move Cursor
Backspace	Clear Input or Error
Delete	Clear Input or Error
Enter	Save Input
F1 - F6	Softkey Functions
Home	Toggle MENU
Page Down	Next Page (Page Forward)
Page Up	Previous Page (Page Back)

4.2 Text Editing *(User Messages, File and I/O Names)*

Key	Function
Arrows	Move Cursor within String
Backspace	Delete Previous Character
Delete	Delete Current Character
Enter	Advance the Cursor
Insert	Add a Space at Cursor Position
Space Bar	Insert Underbar

This page is intentionally blank.

Index

A

Acrobat 1-1
America Online 1-1

C

CompuServe 1-1
configuration file 1-1, 2-2
saving 3-1

D

DOS
executable 1-1
in Windows 2-1
version 2-1
DOS shell 2-1
Close Window 2-1
Display Usage 2-1
memory requirements 2-1
Video memory parameter 2-1

F

file storage 3-1
floppy disk access code 3-2
floppy disk drive 2-2

I

IC/5
display 1-1
programming 1-1

K

keyboard
special function 3-2, 4-1
text editing 4-1

L

lock code 3-2

P

PC
floppy drive 2-1
minimum CPU 2-1
mouse 2-1
VGA monitor 2-1
PIF Editor 2-1
print screen 3-2
print screen number 3-2

S

softkey 3-1

W

World Wide Web 1-1

This page is intentionally blank.



TWO TECHNOLOGY PLACE
EAST SYRACUSE, NY 13057-9714 USA

ALTE LANDSTRASSE 6
LI-9496 BALZERS, LIECHTENSTEIN

BONNER STRASSE 498
D-50968 COLOGNE, GERMANY

Phone: +315.434.1100
Fax: +315.437.3803
Email: reachus@inficon.com

Phone: +423.388.3111
Fax: +423.388.3700
Email: reach.liechtenstein@inficon.com

Phone: +49.221.347.40
Fax: +49.221.347.41429
Email: reach.germany@inficon.com

VISIT US ON THE WEB AT www.inficon.com