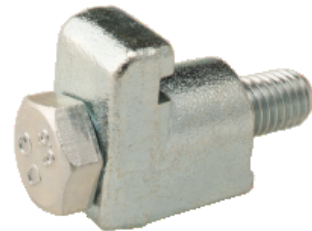


Claw Clamp - Aluminum

INFICON ISO-K quality fittings are manufactured according to ISO 1609, DIN 28404 and Pneurop 6606. Our quality large diameter fittings are the standard vacuum components for all vacuum and high vacuum lines. The high quality INFICON fittings are designed and tested for leak rates less than 1×10^{-9} mbar l/s.



BENEFITS

- Competitively priced
- World wide logistics
- Design and measures follow strictly international respected standards
- Surface finish, welds, material specifications and cleanliness meet or exceed high vacuum specifications
- 2011/65/EU RoHS compliant

ORDERING INFORMATION

Type

DN 160-250 ISO-K

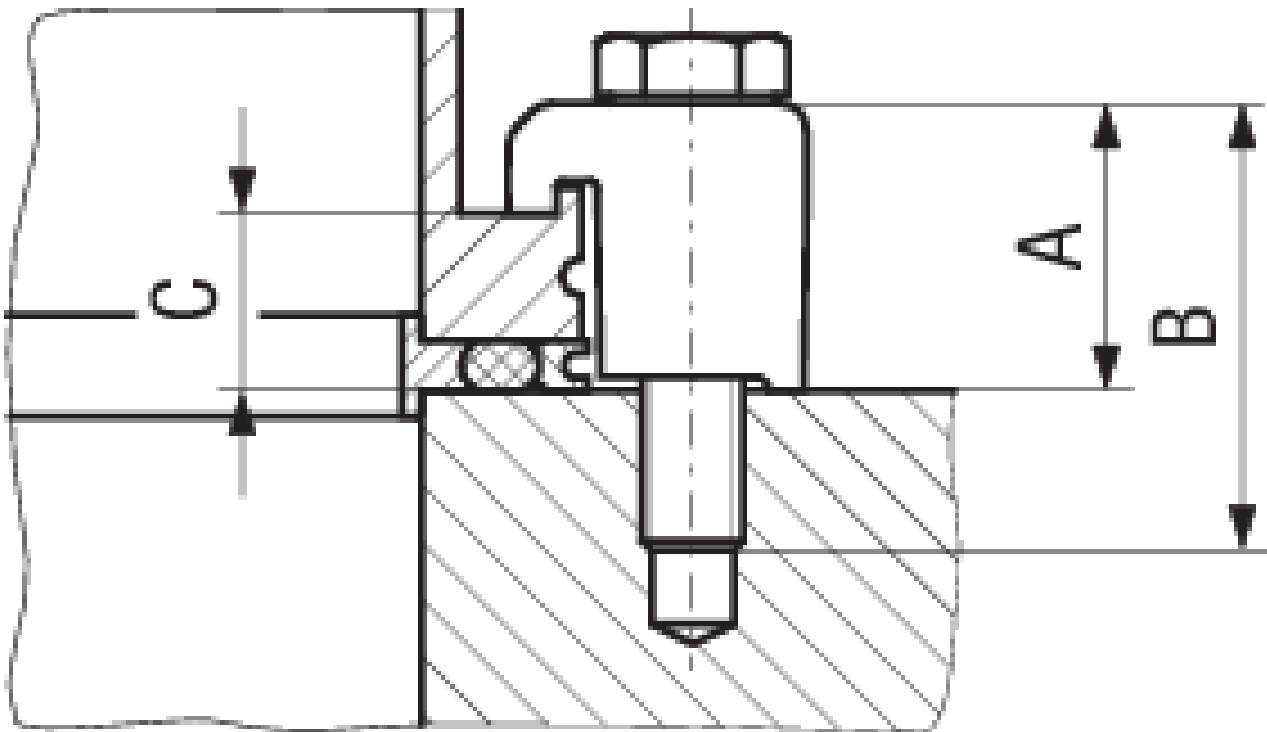
Claw grip, Al, DN 160-250 ISO-K, 4 pcs.

212-432

SPECIFICATIONS

Type	DN 160-250 ISO-K
Dimension A	23
Dimension B	35
Dimension C	13.9
Clamp:	Aluminum 6082/-
Screw:	Steel zinc plated 1045/-
Thread size:	M10
Set of:	4 pcs.

DIMENSIONS



www.inficon.com reachus@inficon.com

Due to our continuing program of product improvements, specifications are subject to change without notice.
RateWatcher is a trademark of INFICON. All other trademarks are the property of their respective owners.

(2014-09) © 2014 INFICON