



# CI-100 Crucible Indexer

## AFFORDABLE, RELIABLE CONTROL OF MULTI-POCKET E-BEAM SOURCES

The CI-100 Crucible Indexer is used to rotate multi-pocket electron beam sources through a rotary vacuum feedthrough. It consists of a controller, motor drive, mounting bracket, and interconnecting cable. Configuration is flexible to adapt to your specific system and process. The CI-100 is compatible with virtually all e-beam sources, and the digital I/O is compatible with existing indexers.

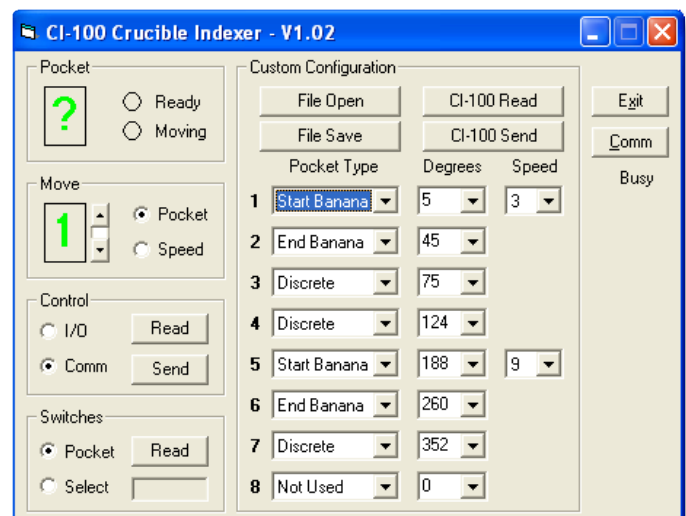
### SIMPLE, INTUITIVE SETUP AND OPERATION

From the front panel, you can control your process with ease:

- Indicate selected pocket, or sweep speed if on a banana
- Select control from the front panel, or through external I/O
- Move indexer clockwise or counter-clockwise
- Move indexer to next pocket, or jogs in 1.8° steps
- Calibrate position or set speed
- Indicate selected pocket
- Indicate indexer is positioned at a valid pocket
- Indicate indexer is moving

### FEATURES AT A GLANCE

- Direct drive—no pulleys to set or adjust
- Electronic calibration of position—no mechanical adjustments
- Small, cool-running high-torque 160 ozf • in motor drive
- Mounts on standard 1 in. (2.54 cm) bolt or 2 3/4 in. ConFlat® feedthroughs
- User-configurable for any pocket/banana layout
- Eight predefined pocket/banana configurations included
- Digital I/O compatible with existing indexers



System Configuration Setup—you can easily customize your configuration with the simple Windows®-based software included.

## SPECIFICATIONS

### Motor Drive

Motor type	Micro-stepper
Torque	1.1 N • m (160 ozf • in)
Speed (RPM)	Low: 0.05, 0.06, 0.08, 0.10, 0.12, 0.15, 0.19, 0.24, 0.30, 0.37 High: 0.5, 0.6, 0.8, 1.0, 1.2, 1.5, 1.9, 2.4, 3.0, 3.7
Resolution	1.8°
Repeatability	0.25°
Size (H x W x D)	89 x 89 x 122 mm (3.5 x 3.5 x 4.8 in.)
Weight	1.5 kg (3.2 lb.)
Power	12 W (supplied by controller)

### Controller

Pockets	Up to eight
Digital inputs	Binary or BCD encoded (Continuous 360° rotation available only via manual operation) Low = 0 to 2 V (dc), high = 4 to 24 V (dc), non-isolated
Communications	RS-232
Size (H x W x D)	88 x 213 x 197 mm (3.5 x 8.4 x 7.75 in.)
Weight	2.7 kg (6 lbs.)
Power	100-120 / 200-240 V (ac), 50/60 Hz, 20 W
Compliance	CE (LVD and ECD)
Interconnecting cable	3 m (10 ft.), standard DB25

## ORDERING INFORMATION

### Crucible Indexer

782-CI-100	CI-100 Crucible Indexer (includes controller and motor)
782-900-008	2U rack extender – mounts one SQM-160 OR CI-100 instrument in 48.3 cm (19 in.) rack
782-900-014	2U rack adapter – mounts two SQM-160 OR CI-100 instruments in 48.3 cm (19 in.) rack



Motor Drive Mount—shown with mounting bracket and flexible coupling attached.



[www.inficon.com](http://www.inficon.com) [reachus@inficon.com](mailto:reachus@inficon.com)

Due to our continuing program of product improvements, specifications are subject to change without notice.

Windows is a registered trademark of Microsoft corporation.

cibe06a1-c ©2014 INFICON