



# Three Channel Gauge Controller & Sensor Heads

Accurate from atmosphere to ultrahigh vacuum for demanding applications



 **INFICON**  
Inspired by visions. Proven by success.

# Accurate from atmosphere to ultrahigh vacuum

The INFICON Three Channel Gauge Controller family VGC083A/B/C is designed to control and monitor vacuum pressure from atmosphere down to ultrahigh vacuum with a unique choice of different passive gauge head types,

## ADVANTAGES AT A GLANCE

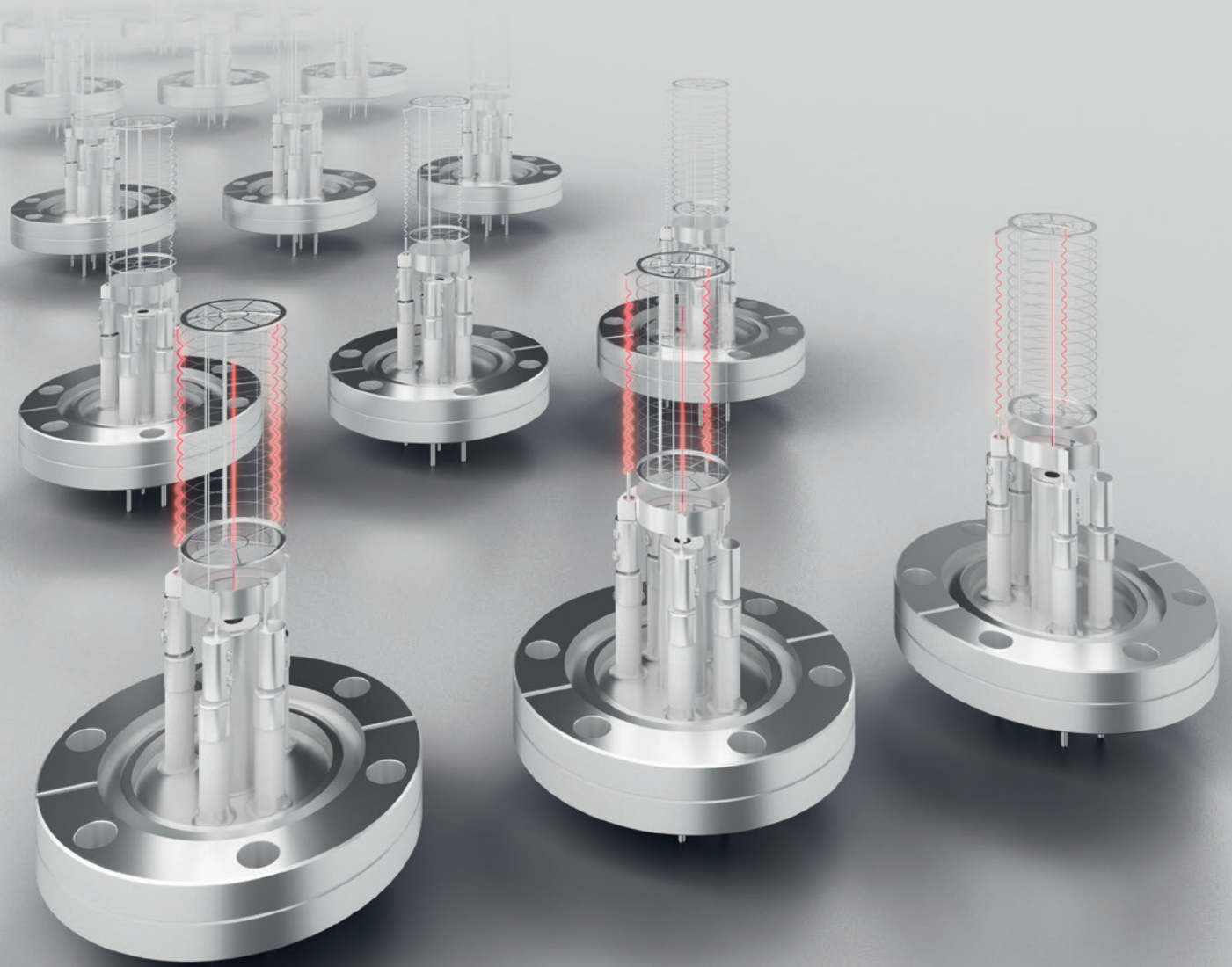
- Simple operation with special OLED display for parameter, sensor or general settings with softkeys
- Three analog outputs, user assignable for any of the gauges with different selectable output curves
- Sensor 1 ionization gauge can be automatically turned on/off from sensor 2 or 3
- Remote digital I/O sensor and emission on/off
- Free definable setpoints per sensor channel with adjustable hysteresis
- 6 assignable single pole double throw setpoint relays
- Compact space saving half rack design

## APPLICATIONS

- In R&D laboratories or industrial high vacuum and ultrahigh vacuum systems
- To control and monitoring standard vacuum systems starting at ATM
- Bakeable for UHV application
- Radiation resistant gauge heads available

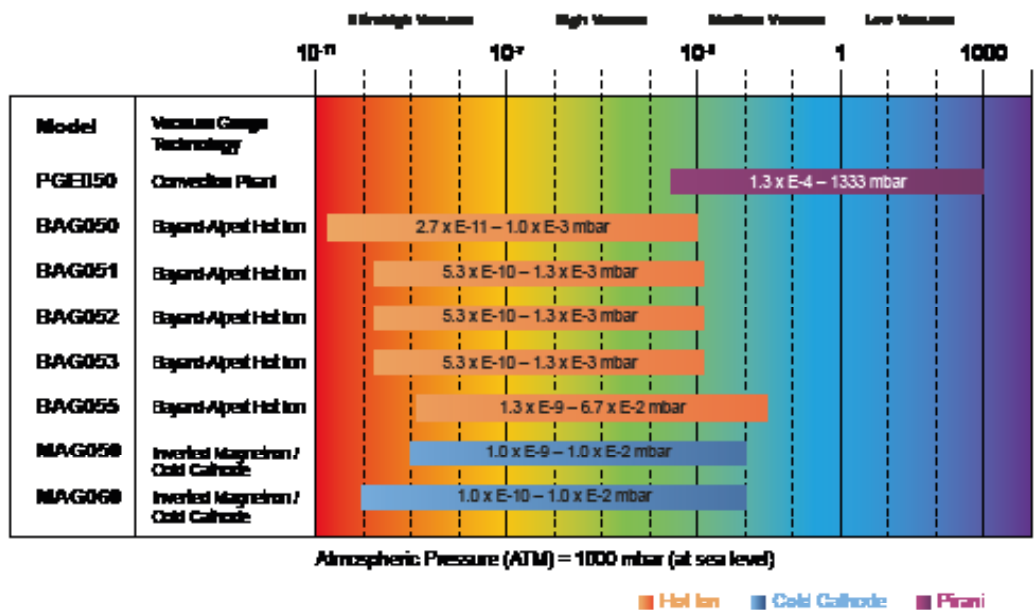
reaching from Convection Enhanced Piranis to different Bayard-Alpert Hot Ionization and Cold Ionization sensor heads. The controller family VGC083A/B/C supports up to 8 different passive gauge sensor heads.



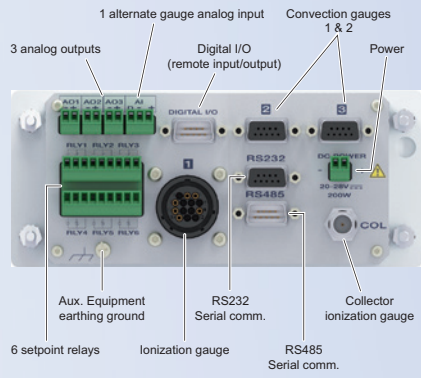


## Passive Vacuum Sensor Heads PGE050, BAG05x, MAG050/060

### MEASUREMENT RANGE

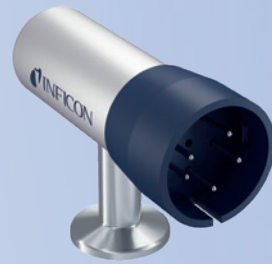


### ELECTRICAL CONNECTIONS



### PASSIVE CONVECTION ENHANCED PIRANI GAUGE HEADS

- Less outgassing
- Fast response
- Robust design
- Gold plated tungsten

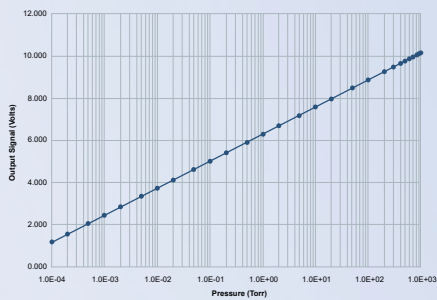


### POSSIBLE SET-UPS

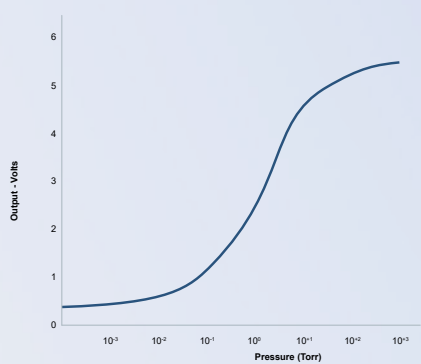


### ANALOG OUTPUT SIGNALS

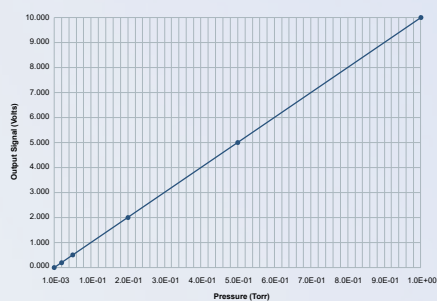
#### Output 0.6 to 10.23 V log-linear



#### Output S-Curve non-linear



#### Output 0 to 10 V linear



### PASSIVE COLD CATHODE GAUGE HEADS MAG050/060

- Gauge ignition aid
- Internal elastomer seal or full metal sealed
- Simplified cleaning through easy gauge disassembly
- Bakeout up to 250°C
- Radiation resistant up to 10<sup>5</sup> Gy



### COMPACT ION GAUGE BAG055

- Dual Yt<sub>2</sub>O<sub>3</sub> coated iridium filament
- High ± 15% accuracy
- Bakeout 200°C
- Repeatability N<sub>2</sub> ±5%
- Compact size



### PASSIVE HOT ION NUDE GAUGE BAG050/051

- Electron bombardment-degas
- ± 20% accuracy
- low pressure measurement down to 2 x 10<sup>-11</sup> Torr
- Bakeout 450°C



### PASSIVE HOT ION GLASS GAUGE HEADS BAG052/053

- Electron bombardment-degas
- ±20% accuracy
- Bakeout 450°C



## PASSIVE VACUUM GAUGE CONTROLLER & SENSOR HEADS

SPECIFICATIONS		VGC083A	VGC083B	VGC083C
Measurement channels		3		
Display	Pressure indication	LED - 3 independent pressure display channels		
	Programming & set-up screen	OLED		
Connectable gauges		PGE050, BAG050, BAG055	PGE050, BAG051, BAG052, BAG053	PGE050, MAG050, MAG060
Sensor 1 overpressure protection		Hot Ion / Cold Cathode sensor turns off if pressure exceeds maximum allowable pressure		
Interface (digital)		RS232, RS485 <sup>1)</sup> , Analog out 0-10V		
Relay	Setpoint	6 relays free assignable to the used gauges		
	Contact rating	5 A at 30 Vdc, 5 A at 250 Vac		
Supply voltage (external)		+20 ... +28, 200 W <sup>2)</sup> / 36 W <sup>3)</sup>	+20 ... +28, 200 W	+20 ... +28, 12 W
Temperature	Operation (ambient)	0 ... +40 °C		
	Storage	-40 ... +70 °C		
Humidity		0 ... 95% relative humidity, non-condensing		
Housing		aluminum housing		
Weight		0.7 kg / 1.7 lb		

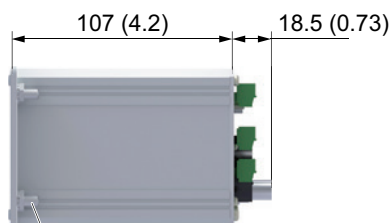
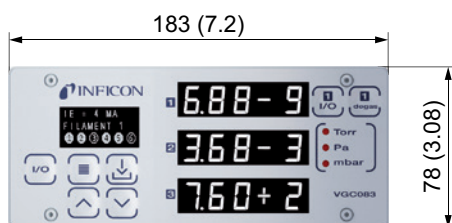
- Command protocol compatibility with GP307
- When used with BAG050, BAG051, BAG052, BAG053
- When used with BAG055



## DIMENSIONS

mm (inch)

VGC083



Threaded Male PEM Stud  
(10 - 32 x 0.4 in.) x 4



[www.inficon.com](http://www.inficon.com) [reachus@inficon.com](mailto:reachus@inficon.com)

Due to our continuing program of product improvements, specifications are subject to change without notice.  
©12-2023 INFICON