

Claw Clamp with Hex. Socket Cap Screw

INFICON ISO-KF fittings are manufactured according to ISO 2861/1, DIN 28403 and Pneurop 6606. Our quality fittings are the standard components for all vacuum and high vacuum applications. The high quality INFICON components are designed and tested for leak rates less than 1×10^{-9} mbar l/s.

혜택

- Competitively priced
- Design and measures follow strictly international respected standards
- World wide logistics
- 2011/65/EU RoHS compliant



주문 정보

유형

Claw clamp DN 10-50 ISO-KF, 4 pcs.

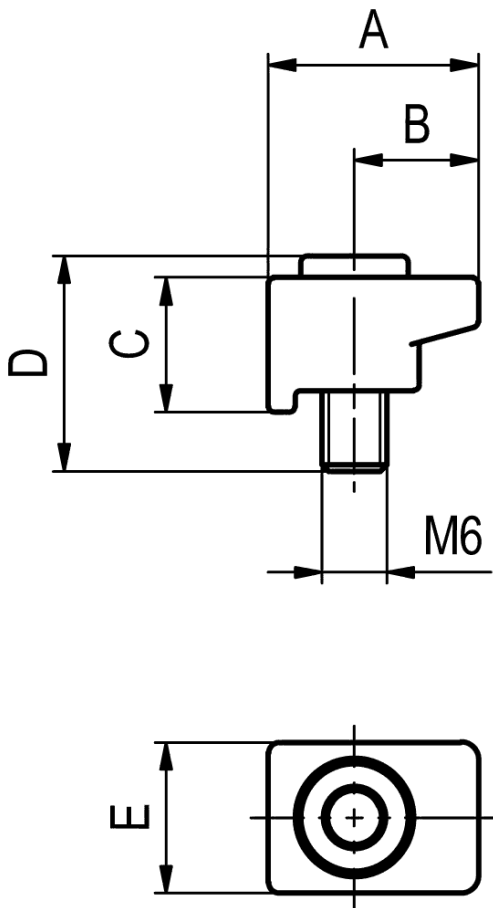
DN 10 - 50 ISO-KF

211-040

사양

유형	DN 10 - 50 ISO-KF	
Dimension A	mm	19.5
Dimension B	mm	11.5
Dimension C	mm	12.5
Dimension D	mm	20
Dimension E	mm	14
Set of	4 pcs	
Claw	Aluminum	
Screw	Stainless steel	

크기



www.inficon.com reachus@inficon.com

지속적인 제품 개선 프로그램을 위해 사전 고지 없이 사양이 변경될 수 있습니다.
RateWatcher는 INFICON의 등록상표입니다. 본 사이트에 있는 다른 모든 상표들은 각 소유자의 재산입니다.

(2018-10) © 2018 INFICON