

Claw Clamp with Hex. Socket Cap Screw

INFICON ISO-KF fittings are manufactured according to ISO 2861/1, DIN 28403 and Pneurop 6606. Our quality fittings are the standard components for all vacuum and high vacuum applications. The high quality INFICON components are designed and tested for leak rates less than 1×10^{-9} mbar l/s.

利点

- Competitively priced
- Design and measures follow strictly international respected standards
- World wide logistics
- 2011/65/EU RoHS compliant



注文の情報

タイプ

Claw clamp DN 10-50 ISO-KF, 4pcs/set

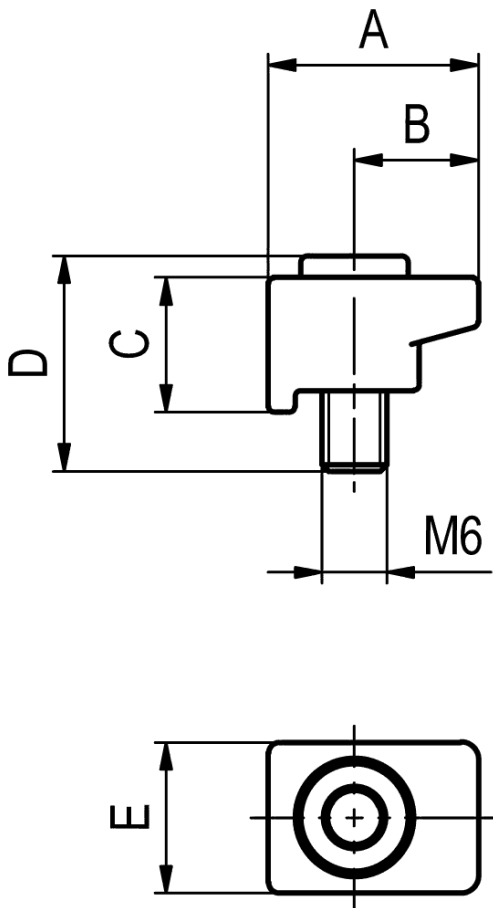
DN 10 - 50 ISO-KF

211-040

仕様

タイプ		DN 10 - 50 ISO-KF
Dimension A	mm	19.5
Dimension B	mm	11.5
Dimension C	mm	12.5
Dimension D	mm	20
Dimension E	mm	14
Set of		4 pcs
Claw		Aluminum
Screw		Stainless steel

寸法



www.inficon.com reachus@inficon.com

製品向上のプログラムを続けるため、仕様は通知なく変更されます。
RateWacheはINFICONの商標です。その他すべての商標は、それぞれの所有者の資産となります。

(2018-10) © 2018 INFICON