

Claw Clamp with Hex. Socket Cap Screw

INFICON ISO-KF fittings are manufactured according to ISO 2861/1, DIN 28403 and Pneurop 6606. Our quality fittings are the standard components for all vacuum and high vacuum applications. The high quality INFICON components are designed and tested for leak rates less than 1×10^{-9} mbar l/s.

BENEFICIOS

- Competitively priced
- Design and measures follow strictly international respected standards
- World wide logistics
- 2011/65/EU RoHS compliant



INFORMACIÓN DEL PEDIDO

Tipo

Claw clamp DN 10-50 ISO-KF, 4 pcs.

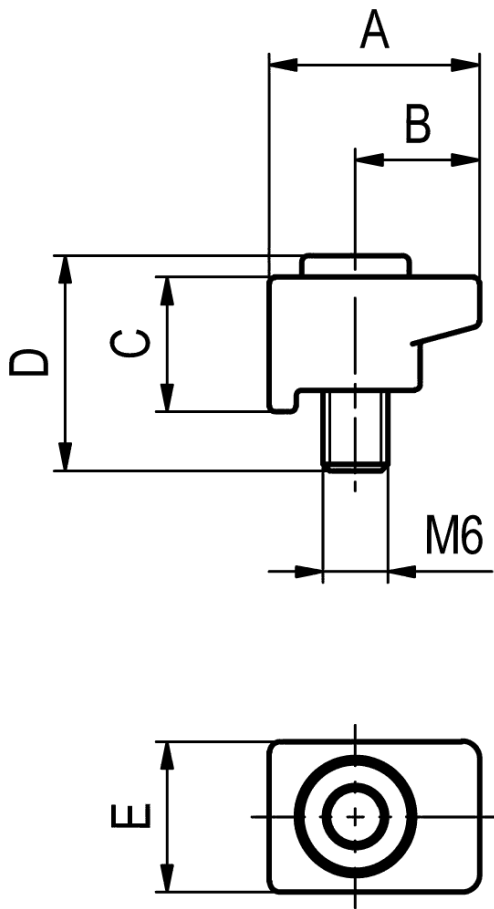
DN 10 - 50 ISO-KF

211-040

ESPECIFICACIONES

Tipo		DN 10 - 50 ISO-KF
Dimension A	mm	19.5
Dimension B	mm	11.5
Dimension C	mm	12.5
Dimension D	mm	20
Dimension E	mm	14
Set of		4 pcs
Claw		Aluminum
Screw		Stainless steel

DIMENSIONES



www.inficon.com reachus@inficon.com

Debido a nuestro programa continuo de mejoras en los productos, las especificaciones están sujetas a modificaciones sin previo aviso. RateWatcher es una marca comercial de INFICON. El resto de marcas comerciales son propiedad de sus respectivos propietarios.

(2018-10) © 2018 INFICON