

Datasheet

Micro GC Fusion® Application Datasheet - D2 Impurities

Introduction

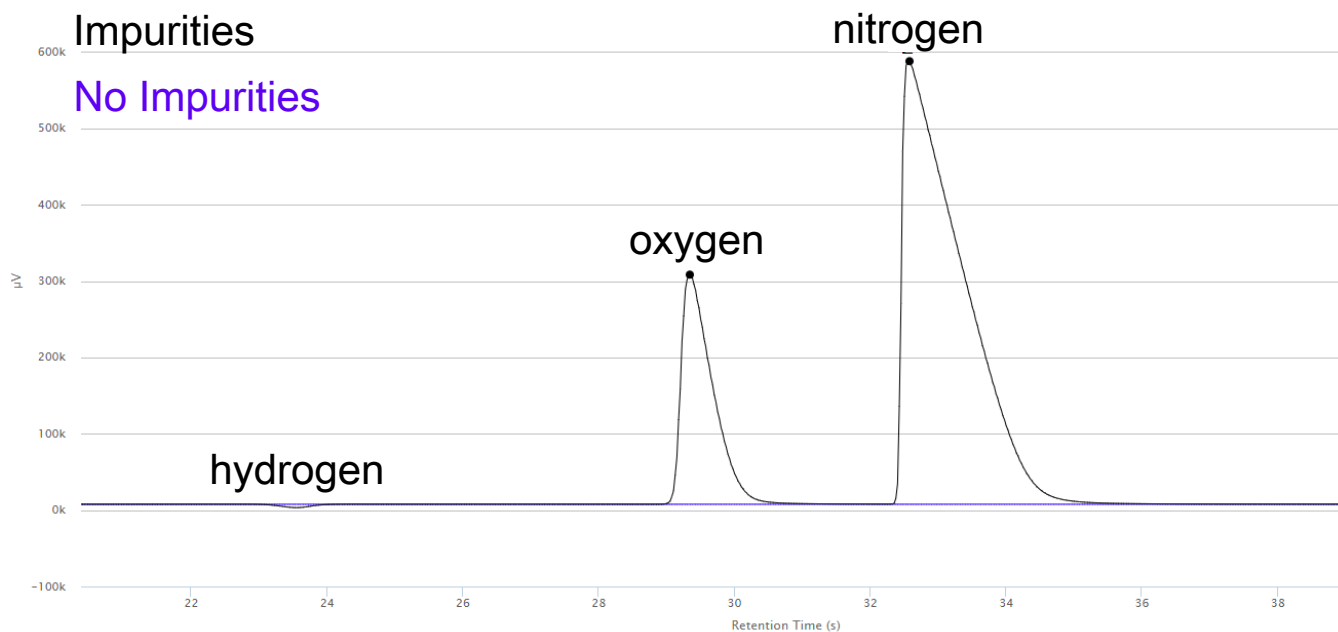
This datasheet highlights the 10 m Molsieve module used to test for air in deuterium. Two chromatograms are overlaid below - one with the presence of impurities and one without.

Starting Parameters

These parameters can be used as a starting point for creating a method and can be adjusted to ensure all compounds are fully separated. Exact retention times will vary from GC to GC, but the compound order remains the same.

Method Parameter	Module – 10 m Molsieve, Backflush Injector (GCM-W02)
Inject time	40 ms
Backflush time	10 s
Injector temperature	90°C
TCD temperature	70°C
Column pressure and carrier gas	20 psi, 99.999% deuterium
Column temperature	100°C (60 s)
Sample pump time	60 s
Sample inlet temperature	50°C

Chromatogram





www.inficon.com reachus@inficon.com

Due to our continuing program of product improvements, specifications are subject to change without notice.
The trademarks mentioned in this document are held by the companies that produce them.

dibk62a1

©2022