

INSTRUCTION SHEET

Micro GC Fusion® Offline Analysis Installation Instruction Sheet

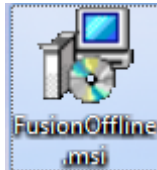
For a successful installation of the Micro GC Fusion® Offline Analysis software, please have the following items available:

- ◆ Micro GC Fusion Offline Analysis License Certificate
- ◆ A computer with the following minimum configuration:
 - ◆ Operating System: Windows 7, 64-bit or Windows 10, 64-bit
 - ◆ System CPU: 1.5 GHz
 - ◆ System RAM: 2 GB
 - ◆ Screen Resolution: 1024 x 768 pixels

Follow these steps to complete the Fusion Offline Analysis software installation:

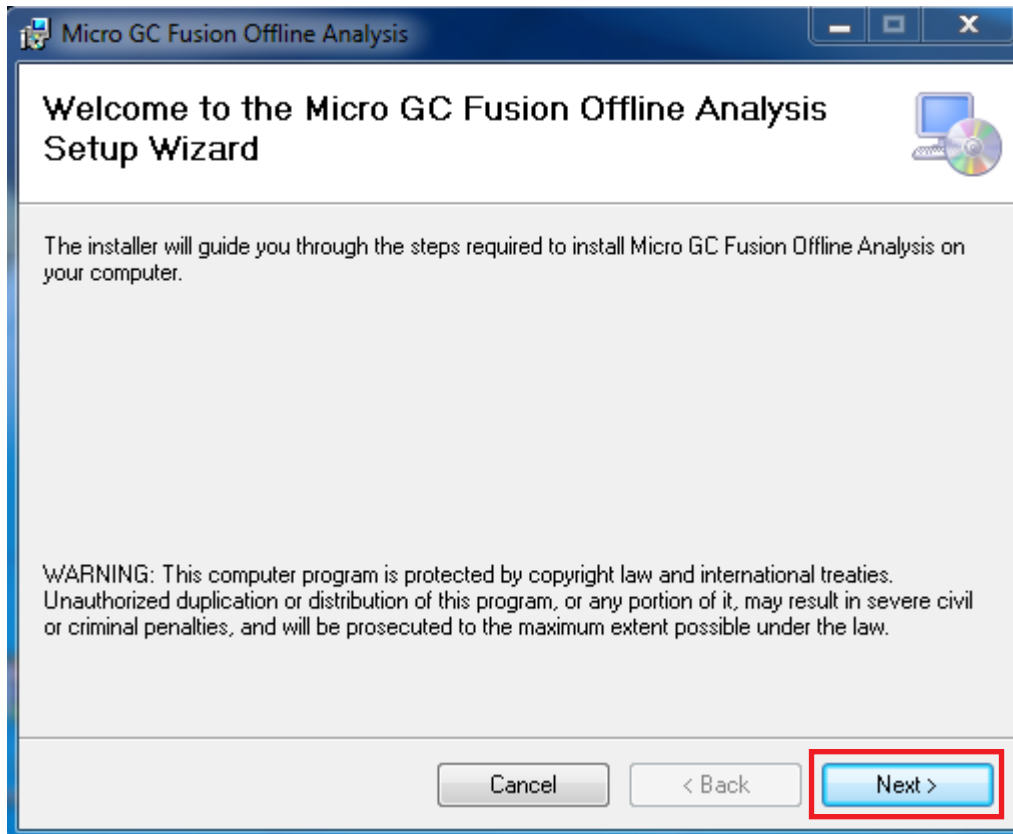
- 1** Download the Micro GC Fusion Offline Analysis Software at <https://www.inficon.com/downloads/software-downloads/>
- 2** Uncompress the downloaded file.
- 3** Double click and run **FusionOffline.msi** to start the installation. See Figure 1.

Figure 1 Icon of Fusion Offline Analysis Installation program



- 4 Click **Next** on the installation dialog box. See Figure 2.

Figure 2 Welcome to the Micro GC Fusion Offline Setup Wizard dialog box



- 5 Select to install the program on a single computer (**Just me**) or multiple users (**Everyone**) if the computer is shared. After making the selection, click **Next**. See Figure 3, Figure 4 and Figure 5.

Figure 3 **Selection Installation Folder** dialog box, with **Everyone** selected

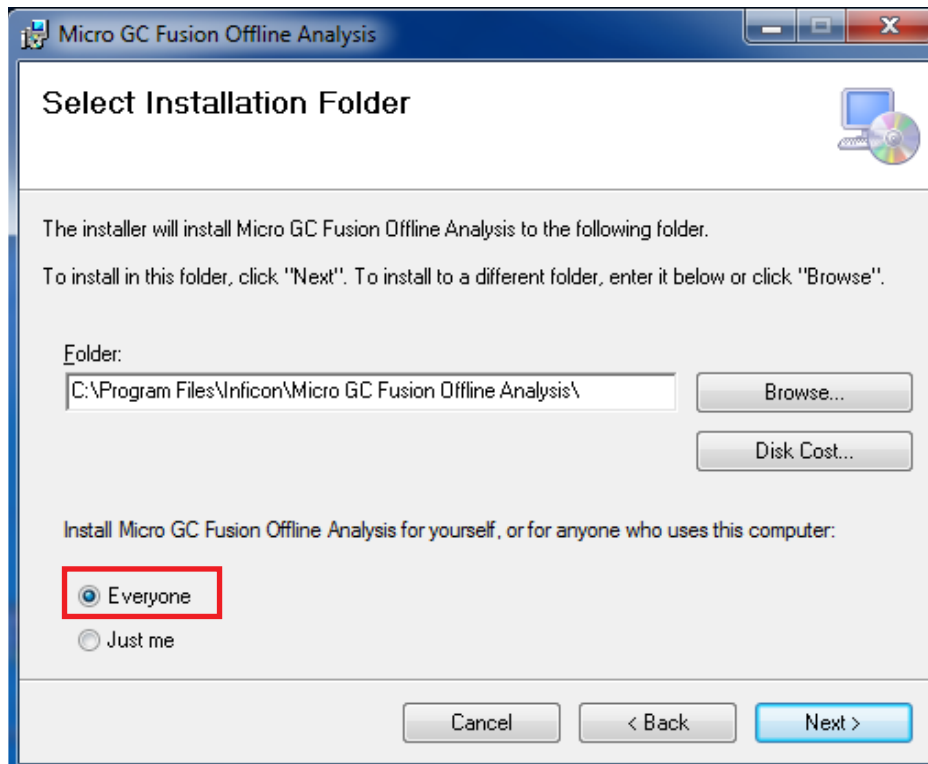


Figure 4 **Selection Installation Folder** dialog box, with **Just me** selected

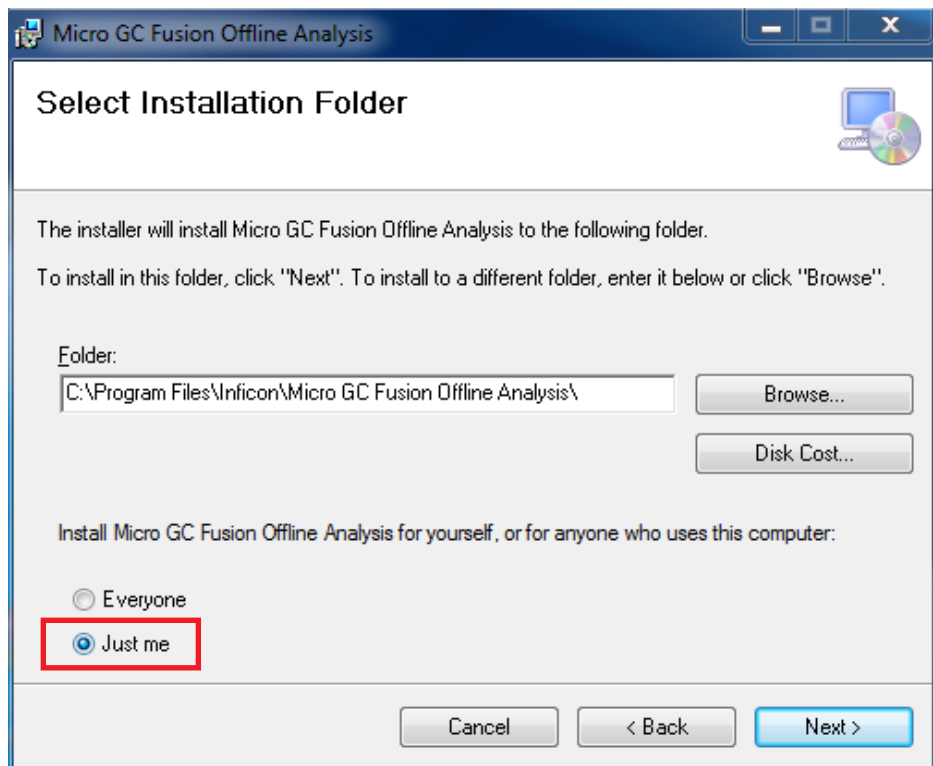
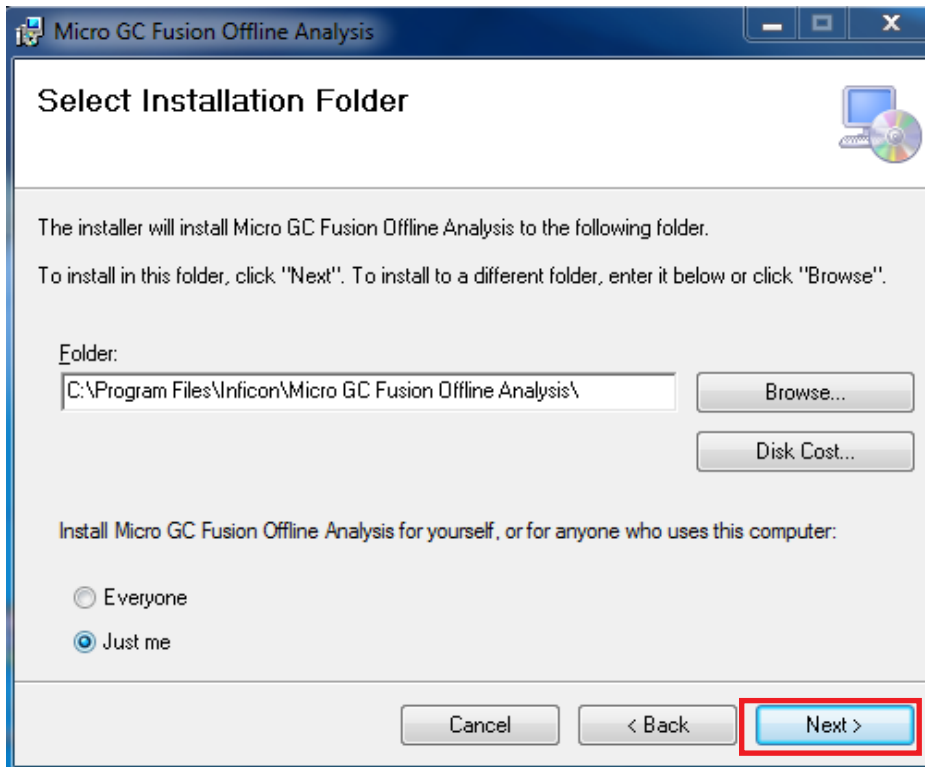
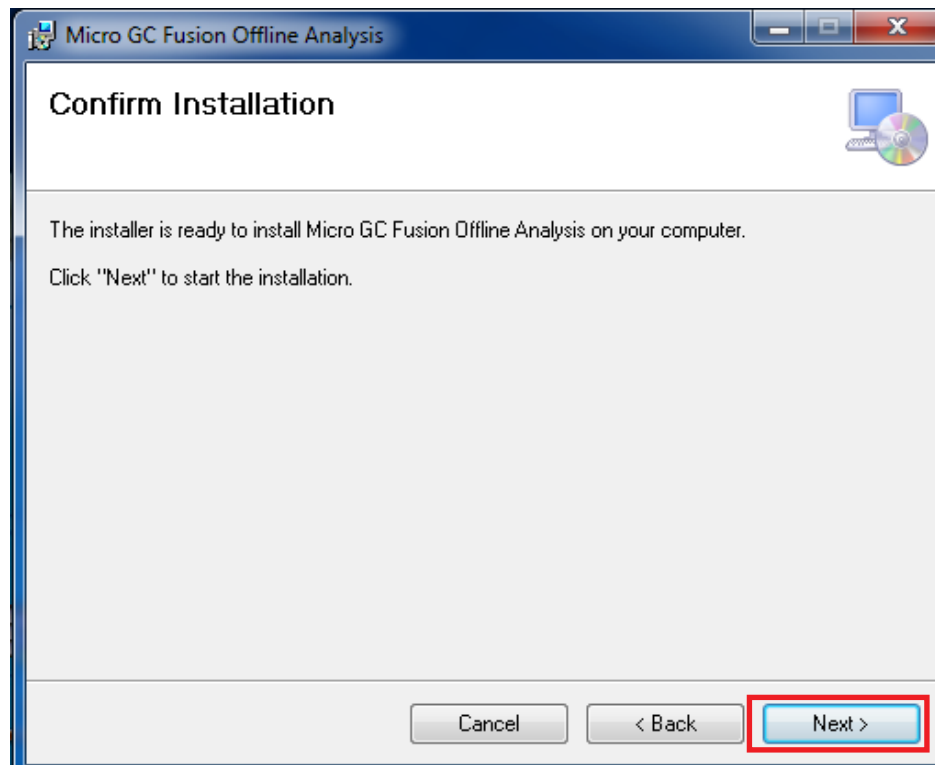


Figure 5 Select Installation Folder



- 6 When ready to install Micro GC Fusion Offline Analysis, click **Next**. See Figure 6.

Figure 6 Confirm Installation dialog box



- 7 Wait for the installation to complete, and then click **Close**. See Figure 7 and Figure 8.

Figure 7 *Installing Micro GC Fusion Offline dialog box*

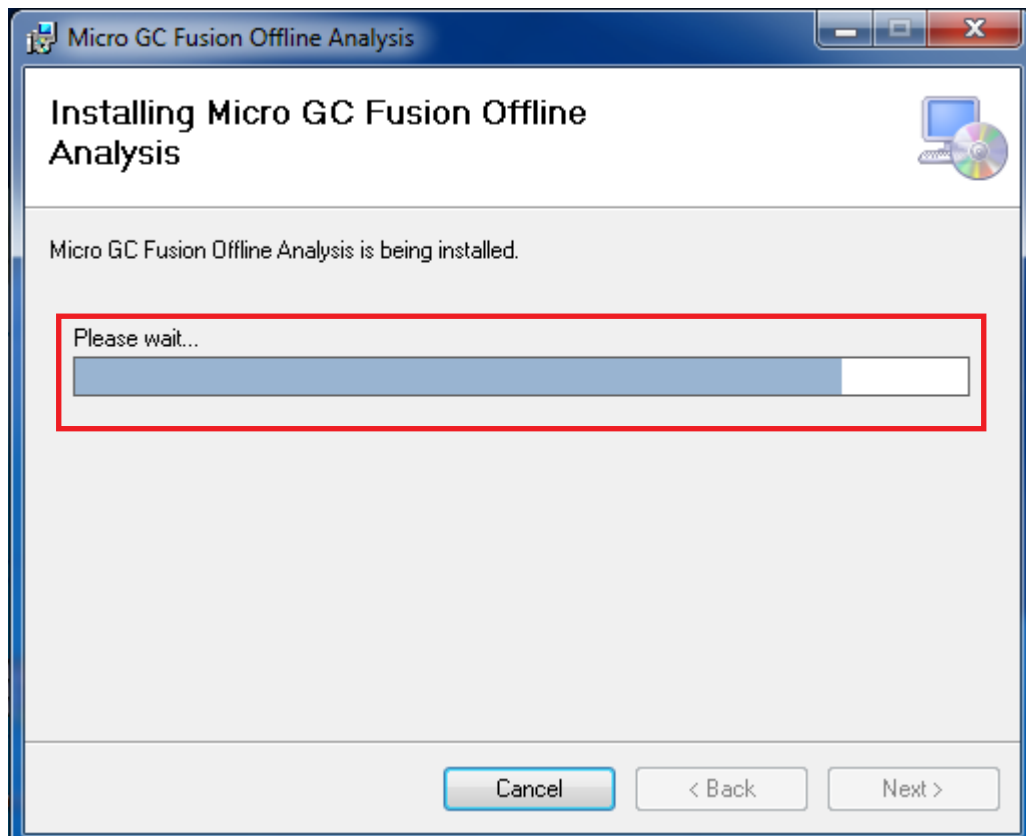
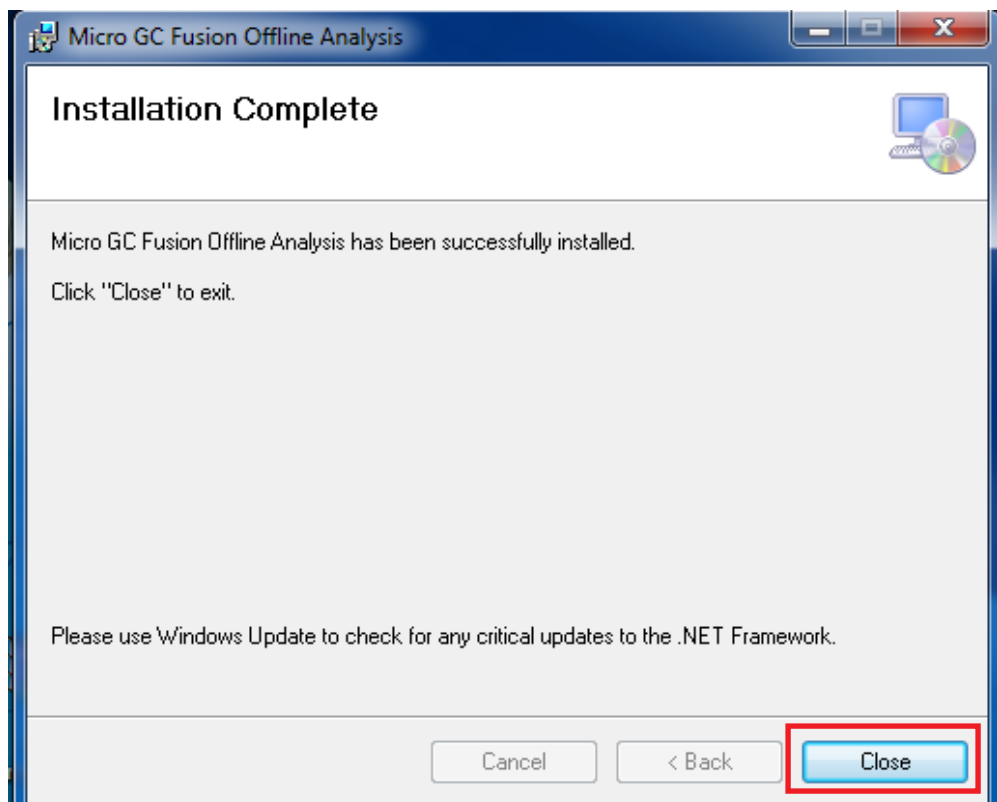
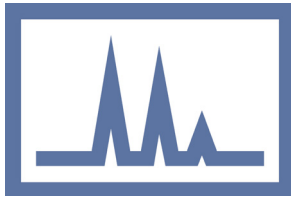


Figure 8 *Installation complete dialog box*



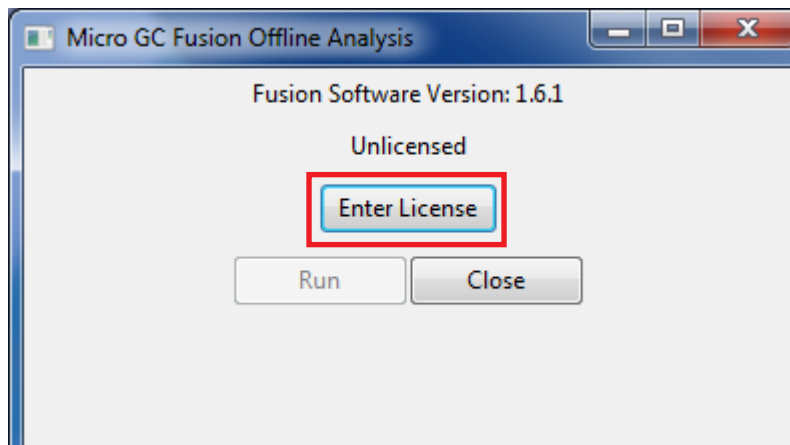
- 8 Micro GC Fusion Offline Analysis is now installed. Double click the Micro GC Fusion Offline Analysis shortcut that is now on the desktop. This will open the Micro GC Fusion Offline Analysis user interface in the default browser. See Figure 9.

Figure 9 Micro GC Fusion Offline Analysis shortcut icon



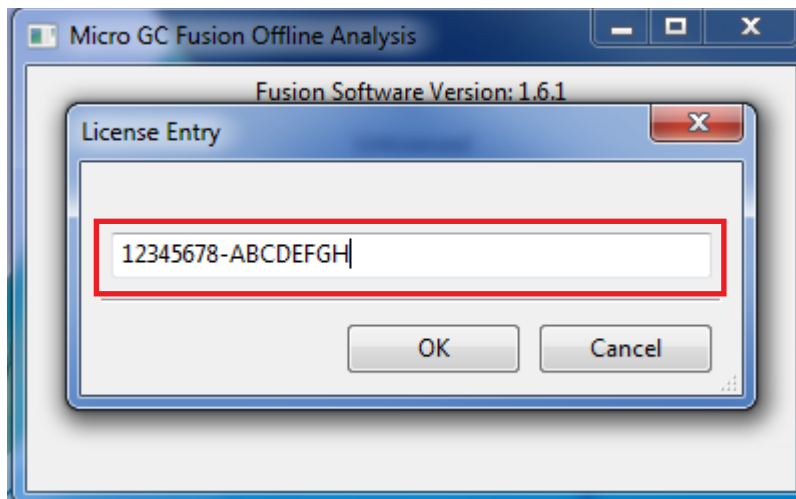
- 9 After the Micro GC Fusion Offline Analysis dialog box appears, click **Enter License**. See Figure 10.

Figure 10 Micro GC Fusion Offline Analysis dialog box with “Enter License” selected



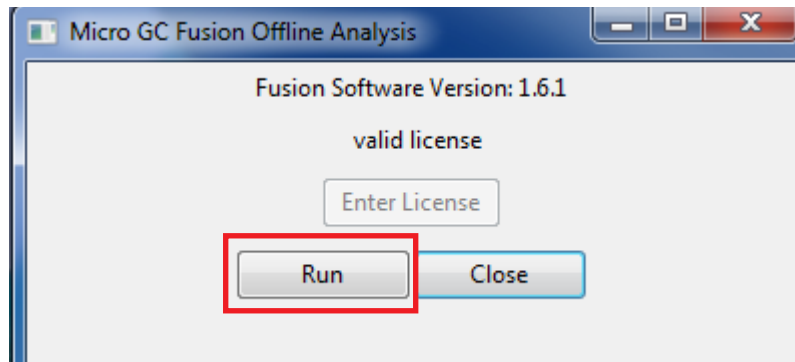
- 10 Enter your Micro GC Fusion Offline Analysis license number, which is available on the Micro GC Fusion Offline Analysis License Certificate, and select **OK**. See Figure 11.

Figure 11 Enter license number in the License Entry dialog box



- 11** After license validation, the **Run** button will be available. Click **Run** to launch the software. See Figure 12.

Figure 12 Micro GC Fusion Offline Analysis dialog box with "Run" selected



- 12** Micro GC Fusion Offline Analysis will open in your default Internet browser.

NOTE: Additional instructions for using Micro GC Fusion Offline Analysis can be found in the Micro GC Fusion operating manual. To access the operating manual click


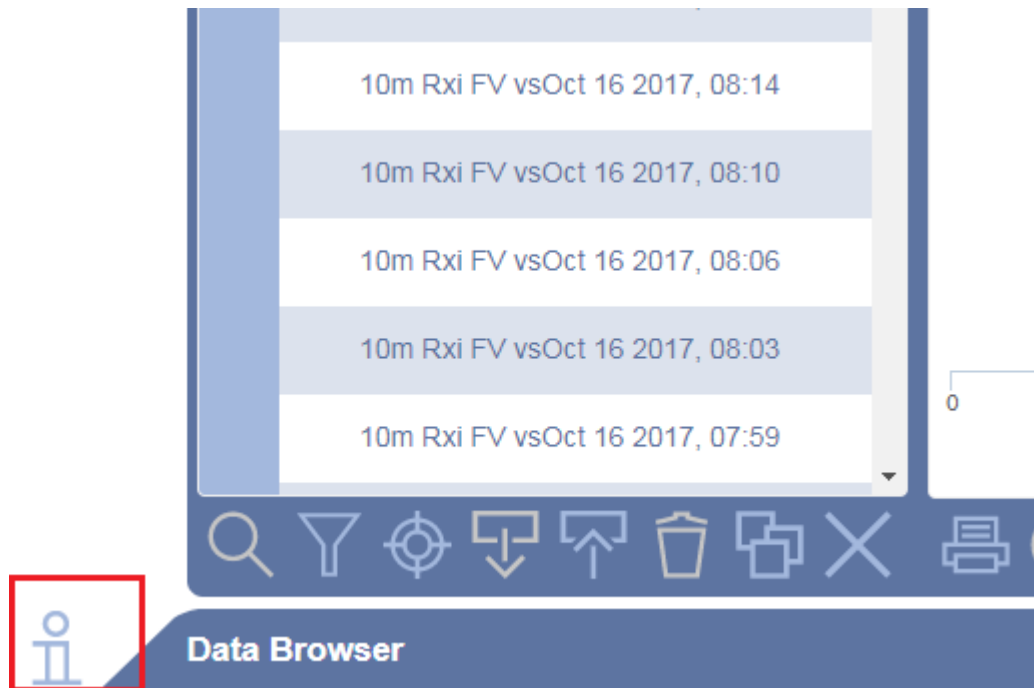
on the  in the bottom left of the screen. See Figure 13.

Figure 13 Access operating manual



www.inficon.com reachus@inficon.com

Due to our continuing program of product improvements, specifications are subject to change without notice. All trademarks are the property of their respective owners.