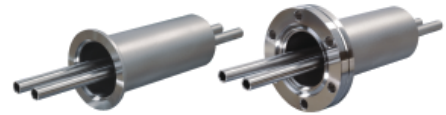


# Liquid Feedthroughs ISO-KF & CF-F

---



## BENEFITS

---

- For H2O and LN2
- Thermal insulated
- Specially suited for very hot and very cold applications
- 2011/65/EU RoHS compliant

## ORDER INFORMATION

---

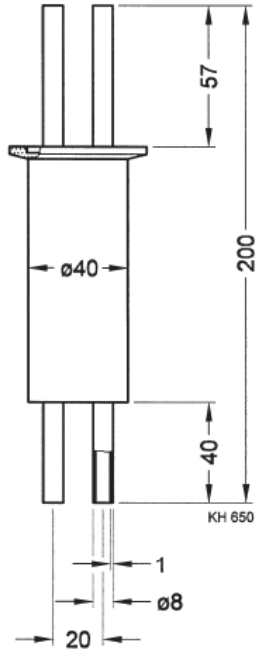
Type	DN 40 ISO-KF	DN 40 CF-F
FD 040 U, DN 40 CF-F		214-102
FD 040, DN 40 ISO-KF	214-101	

## SPECIFICATIONS

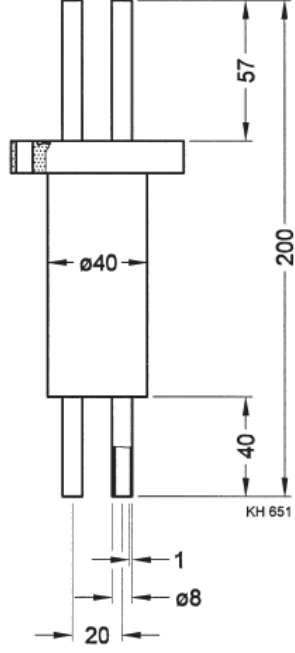
Type		DN 40 ISO-KF	DN 40 CF-F
Vacuum connection		DN 40 ISO-KF	DN 40 CF-F
Feedthrough/seal		welded	welded
Tube dimensions	mm	Ø8 x 1	Ø8 x 1
Number of tubes		2	2
Tightness	mbar•L/s	$1 \times 10^{-9}$	$1 \times 10^{-10}$
Pressure		$10^{-8}$ mbar ... 10 bar	$10^{-9}$ mbar ... 10 bar
Temperature range	°C	-200 ... +150	-200 ... +400
Material		stainless steel 304/1.4301	stainless steel 304/1.4301
Weight	kg	0.3	0.3

## DIMENSIONS

214-101



214-102



[www.inficon.com](http://www.inficon.com) [reachus@inficon.com](mailto:reachus@inficon.com)

Due to our continuing program of product improvements, specifications are subject to change without notice. RateWatcher is a trademark of INFICON. All other trademarks are the property of their respective owners.

(2016-08) © 2016 INFICON