

# Electrical Feedthroughs DN16 ISO-KF

INFICON offers economical priced ISO-KF flange feedthroughs which can be found in all standard vacuum applications all over the world for many years. In addition to this feedthroughs a choice of connectors for vacuum and atmosphere side of vacuum chamber is configured.

For UHV applications CF flanged feedthroughs are available in different sizes and technical specifications.



## BENEFITS

- 2011/65/EU RoHS compliant

## ORDER INFORMATION

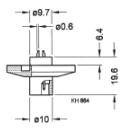
Type	4 Feedthroughs with ATM Connector	9 Feedthroughs with ATM Connector	9 Feedthroughs with ATM & Vacuum Connector
Feedthrough, 4 poles, DN 16 ISO-KF	214-111		
Feedthrough, 9 poles			214-113
Feedthrough, 9 poles		214-112	
Inner plug connector, 9p			214-191
Outer plug connector, 4 p	214-171		
Outer plug connector, 9p		214-172	214-172

## SPECIFICATIONS

Type		4 Feedthroughs with ATM Connector	9 Feedthroughs with ATM Connector	9 Feedthroughs with ATM & Vacuum Connector
Vacuum connection		DN 16 ISO-KF	DN 16 ISO-KF	DN 16 ISO-KF
Number of feedthroughs		4	9	9
Voltage per pole	V	50	50	50
Current per pole	A	1	2	2
Connection				
Vacuum side		solder connection	solder connection	connector
Atmospheric side		connector	connector	connector
Diameter of connecting wire	mm	0.6	1.2	1.2
Tightness	mbar•L/s	$1 \times 10^{-9}$	$1 \times 10^{-9}$	$1 \times 10^{-9}$
Pressure (absolute)		$1 \times 10^{-8}$ mbar ... 2.5 bar	$1 \times 10^{-8}$ mbar ... 2.5 bar	$1 \times 10^{-8}$ mbar ... 2.5 bar
Bakeout temperature (feedthrough and connector)	°C	130	130	130
Housing		stainless steel 303/1.4305	stainless steel 303/1.4305	stainless steel 303/1.4305
Insulator		PEEK / Araldite	PEEK / Araldite	PEEK / Araldite
Seal		FPM	FPM	FPM
Contacts (feedthrough and connector)		gold-plated / brass / inox	gold-plated / brass / inox	gold-plated / brass / inox

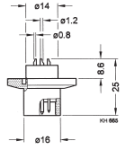
# DIMENSIONS

214-111



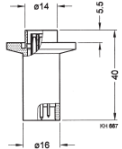
Feedthrough

214-112



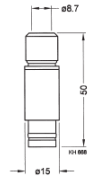
Feedthrough

214-113



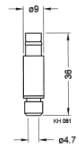
Feedthrough

214-191

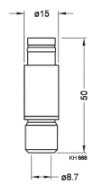


Connector:  
vacuum side

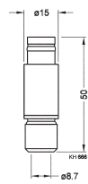
214-171



214-172



214-172



Connector:  
air side



[www.inficon.com](http://www.inficon.com)    [reachus@inficon.com](mailto:reachus@inficon.com)

Due to our continuing program of product improvements, specifications are subject to change without notice. RateWatcher is a trademark of INFICON. All other trademarks are the property of their respective owners.

(2016-08)    © 2016 INFICON