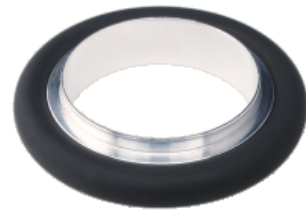


# Centering Ring Stainless Steel 316L

---

INFICON ISO-KF fittings are manufactured according to ISO 2861/1, DIN 28403 and Pneurop 6606. Our quality fittings are the standard components for all vacuum and high vacuum applications. The high quality INFICON components are designed and tested for leak rates less than  $1 \times 10^{-9}$  mbar l/s.



## BENEFITS

---

- Competitively priced
- World wide logistics
- Design and measures follow strictly international respected standards
- 2011/65/EU RoHS compliant

## ORDER INFORMATION

---

Centering ring DN 10 ISO-KF, 316L / CR	211-735
Centering ring DN 10 ISO-KF, 316L / EPDM	211-756
Centering ring DN 10 ISO-KF, 316L / FPM	211-742
Centering ring DN 10 ISO-KF, 316L / NBR	211-749
Centering ring DN 10 ISO-KF, 316L / VMQ	211-763
Centering ring DN 16 ISO-KF, 316L / CR	211-736
Centering ring DN 16 ISO-KF, 316L / EPDM	211-757
Centering ring DN 16 ISO-KF, 316L / FPM	211-743
Centering ring DN 16 ISO-KF, 316L / NBR	211-750
Centering ring DN 16 ISO-KF, Inox / VMQ	211-764
Centering ring DN 20 ISO-KF, 316L / CR	211-737
Centering ring DN 20 ISO-KF, 316L / EPDM	211-758

Centering ring DN 20 ISO-KF, 316L / FPM	211-744
Centering ring DN 20 ISO-KF, 316L / NBR	211-751
Centering ring DN 20 ISO-KF, Inox / VMQ	211-765
Centering ring DN 25 ISO-KF, 316L / CR	211-738
Centering ring DN 25 ISO-KF, 316L / EPDM	211-759
Centering ring DN 25 ISO-KF, 316L / FPM	211-745
Centering ring DN 25 ISO-KF, 316L / NBR	211-752
Centering ring DN 25 ISO-KF, Inox / VMQ	211-766
Centering ring DN 32 ISO-KF, 316L / CR	211-739
Centering ring DN 32 ISO-KF, 316L / EPDM	211-760
Centering ring DN 32 ISO-KF, 316L / FPM	211-746
Centering ring DN 32 ISO-KF, 316L / NBR	211-753
Centering ring DN 32 ISO-KF, Inox / VMQ	211-767
Centering ring DN 40 ISO-KF, 316L / CR	211-740
Centering ring DN 40 ISO-KF, 316L / EPDM	211-761
Centering ring DN 40 ISO-KF, 316L / FPM	211-747
Centering ring DN 40 ISO-KF, 316L / NBR	211-754
Centering ring DN 40 ISO-KF, Inox / VMQ	211-768
Centering ring DN 50 ISO-KF, 316L / CR	211-741
Centering ring DN 50 ISO-KF, 316L / EPDM	211-762
Centering ring DN 50 ISO-KF, 316L / FPM	211-748
Centering ring DN 50 ISO-KF, 316L / NBR	211-755
Centering ring DN 50 ISO-KF, Inox / VMQ	211-769

## SPECIFICATIONS

Type	.
DN 10 ISO-KF	
Dimension A	12
Dimension B	10
Dimension C	8
Dimension D	3.9
Ring:	Stainless Steel 316L / 1.4404
Seals:	CR, FPM, NBR, EPDM, VMQ
DN 16 ISO-KF	
Dimension A	17
Dimension B	16
Dimension C	8

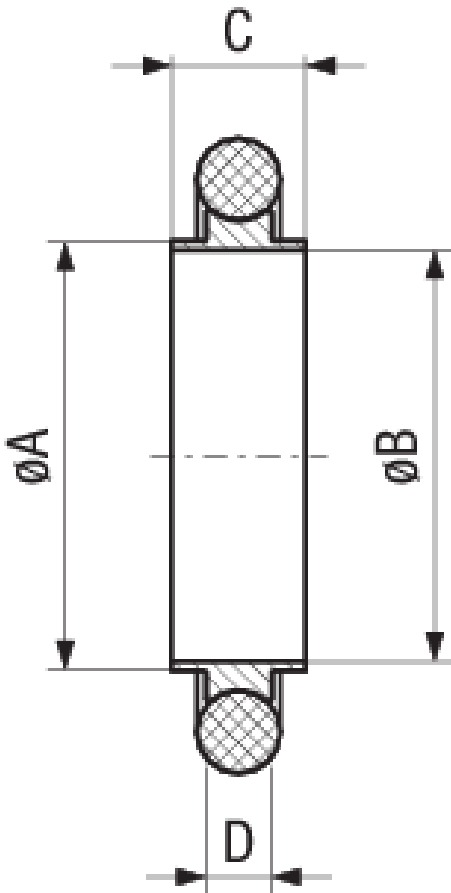
## SPECIFICATIONS

<b>Type</b>	.
Dimension D	3.9
Ring:	Stainless Steel 316L / 1.4404
Seals:	CR, FPM, NBR, EPDM, VMQ
<b>DN 20 ISO-KF</b>	
Dimension A	22
Dimension B	20
Dimension C	8
Dimension D	3.9
Ring:	Stainless Steel 316L / 1.4404
Seals:	CR, FPM, NBR, EPDM, VMQ
<b>DN 25 ISO-KF</b>	
Dimension A	26
Dimension B	25
Dimension C	8
Dimension D	3.9
Ring:	Stainless Steel 316L / 1.4404
Seals:	CR, FPM, NBR, EPDM, VMQ
<b>DN 32 ISO-KF</b>	
Dimension A	34
Dimension B	32
Dimension C	8
Dimension D	3.9
Ring:	Stainless Steel 316L / 1.4404
Seals:	CR, FPM, NBR, EPDM, VMQ
<b>DN 40 ISO-KF</b>	
Dimension A	41
Dimension B	40
Dimension C	8
Dimension D	3.9
Ring:	Stainless Steel 316L / 1.4404
Seals:	CR, FPM, NBR, EPDM, VMQ
<b>DN 50 ISO-KF</b>	
Dimension A	52

## SPECIFICATIONS

Type	.
Dimension B	50
Dimension C	8
Dimension D	3.9
Ring:	Stainless Steel 316L / 1.4404
Seals:	CR, FPM, NBR, EPDM, VMQ

## DIMENSIONS



[www.inficon.com](http://www.inficon.com)    [reachus@inficon.com](mailto:reachus@inficon.com)

Due to our continuing program of product improvements, specifications are subject to change without notice.  
RateWatcher is a trademark of INFICON. All other trademarks are the property of their respective owners.

(2016-08)    © 2016 INFICON