

Cool Drawer Dual Sensor

The Cool Drawer™ Dual Sensor is designed for use in critical processes where it is desirable to have a second crystal in the vacuum chamber. Water cooled, cast stainless steel sensor body, two Cool Drawer crystal holders and a pneumatically actuated shutter provide for a rugged sensor head with the extra reliability of a backup crystal. A cleaner, more reliable vacuum system installation is possible as there are no coaxial cables inside the chamber.

Sensor Configurations

Two sensor configurations are offered: The standard version and the right angle version. The standard version is designed for installation from the side or bottom of the chamber and the cooling tubes and the crystal face are parallel. The right angle version is designed for installation through the top of the vacuum system and the water cooling tubes are perpendicular to the crystal face. In either configuration, sensor head length can range from 10 – 66 cm (4 – 26 in.).

Feedthroughs

INFICON offers two choices for feedthrough types: a 1 in. bolt feedthrough or a CF40 feedthrough.

Feedthrough Connections

Cool Drawer Dual Sensors must be ordered in combination with a feedthrough. The sensor / feedthrough connection can be either welded or made with compression fittings.

Compression fittings allow for easy adjustability without the need for brazing or welding. Sensor head length is adjustable from 10 – 66 cm (4 – 26 in.). When selected with the welded CF40, the sensor is designed for high temperature processes where reliability is critical. Constructed of stainless steel and ceramic materials, it is suitable for applications requiring high temperature bake out (see specifications).

The Cool Drawer Dual Sensor with the CF40 flange is pre-installed in a special two piece 7 cm (2¾ in.) ConFlat® feedthrough. This allows the sensor head to be rotated independently of the flange and circumvents the dimensional limitations of the CF40 flange. Sensor / feedthrough length can be specified between 10 – 66 cm (4 – 26 in.).

ADVANTAGES

- Dual crystals
- Cool Drawer crystal holder
- No internal cables
- Crystal shutter
- Available with:
 - CF40 feedthrough
 - 2.54 cm (1 in.) bolt feedthrough
- Bakeable if ordered with welded CF40 flange
- Adjustable length if ordered with compression fittings
- Sensor / feedthrough combinations available welded to customer specified lengths



SPECIFICATIONS

CDD Series Cool Drawer Dual Sensor specifications

Finish	Stainless steel, gold plated Cool Drawer
Cooling water	0.2 GPM using 1/8 in. O.D. tube, 30°C max. (Do not allow to freeze)
Crystal	Industry standard 0.550 in. diameter
Air supply	55 to 60 PSI regulated
Electrical connection	Two standard female BNCs on atmosphere side

1 in. bolt and compression fitting sealed terminations

Materials	304 stainless steel, Teflon®, ceramic, beryllium nickel, VITON®
Temperature	Operational environment to 300°C with water cooling or 165°C without
Mounting	1.015 in. ±0.010 in. diameter aperture

CF40 welded terminations

Materials	304 stainless steel, ceramic, beryllium nickel
Temperature	Operational environment to 450°C with water cooling or 200°C without
Mounting	Mates with 2 3/4 in. ConFlat® type flanges

SPARE PARTS LIST

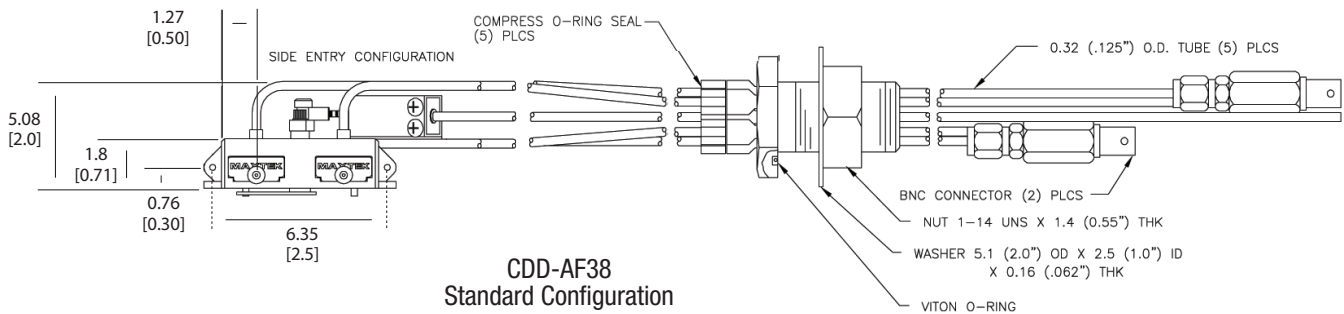
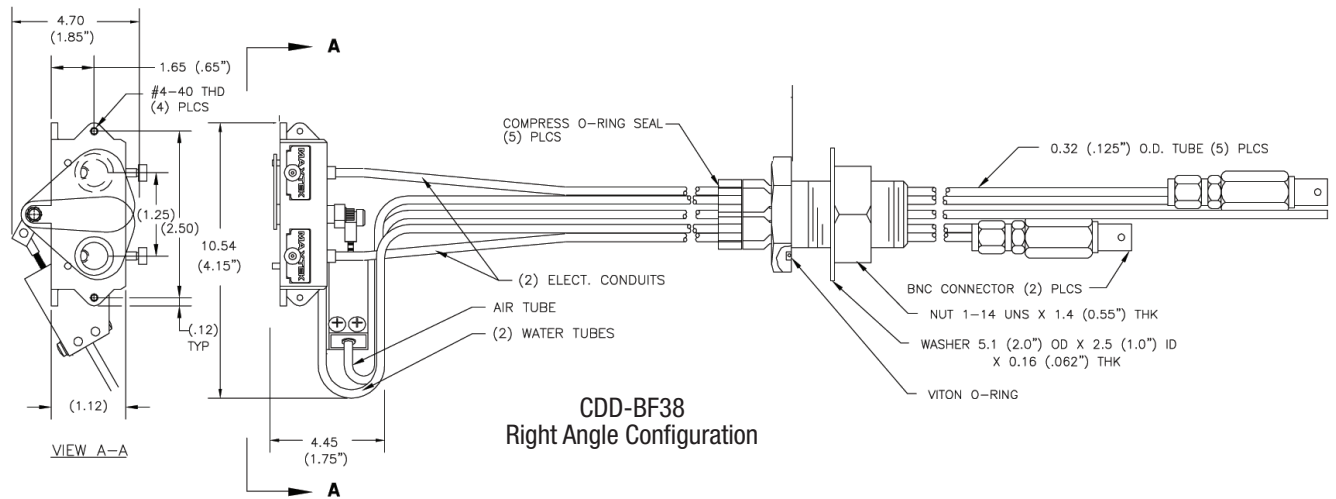
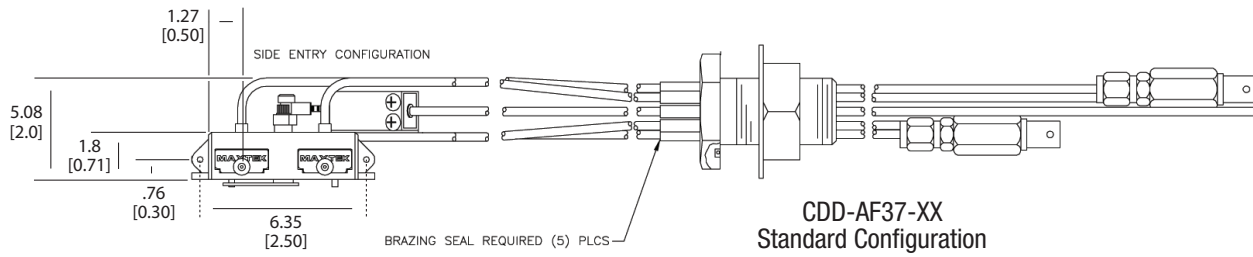
P/N	Description
147401	Shutter
147207	Bellows and cover assembly
147402	Link
147411	Spacer
800128	#4 Lockwasher
800371	Shoulder screw
800372	Washer
803102	O-Ring for 5 port adjustable feedthrough
803261	Washer for 5 port adjustable feedthrough

DIMENSIONS

CDD-AF37-XX, CDD-AF38 and CDD-BF38

Cool Drawer Dual Sensor / feedthrough combinations

NOTE: Measurements in cm [in.]

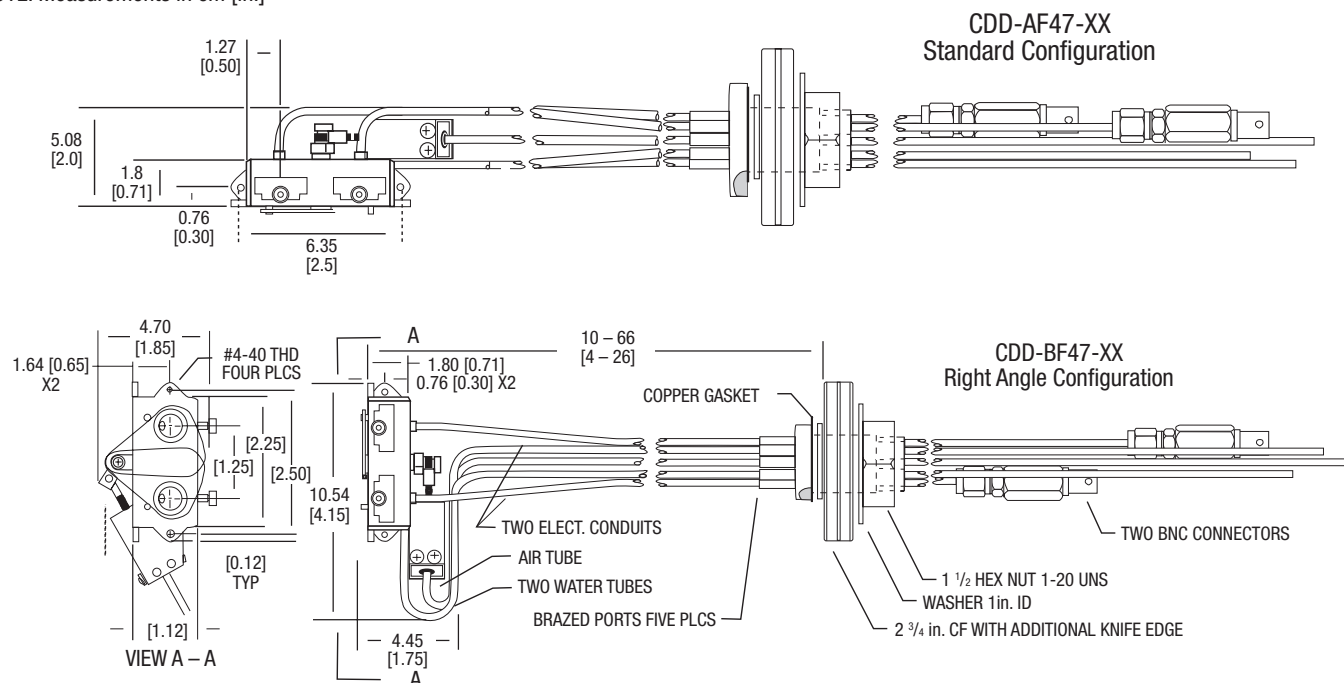


DIMENSIONS

CDD-AF47-XX and CDD-BF47-XX

Cool Drawer Dual Sensor / feedthrough combinations

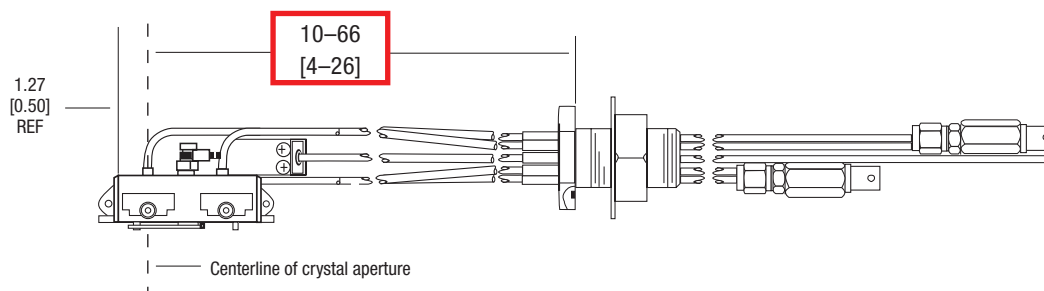
NOTE: Measurements in cm [in.]



DIMENSIONS

Sensor length specification for CDD-AF37-XX sensor / feedthrough combination

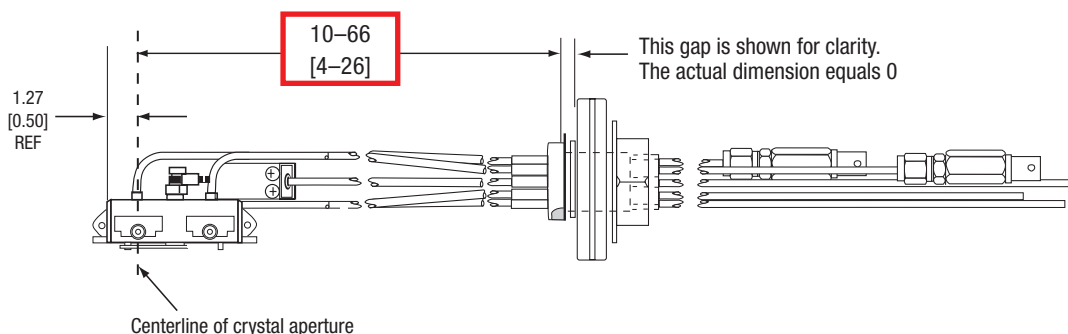
NOTE: Measurements in cm [in.]



DIMENSIONS

Sensor length specification for CDD-AF47-XX sensor / feedthrough combination

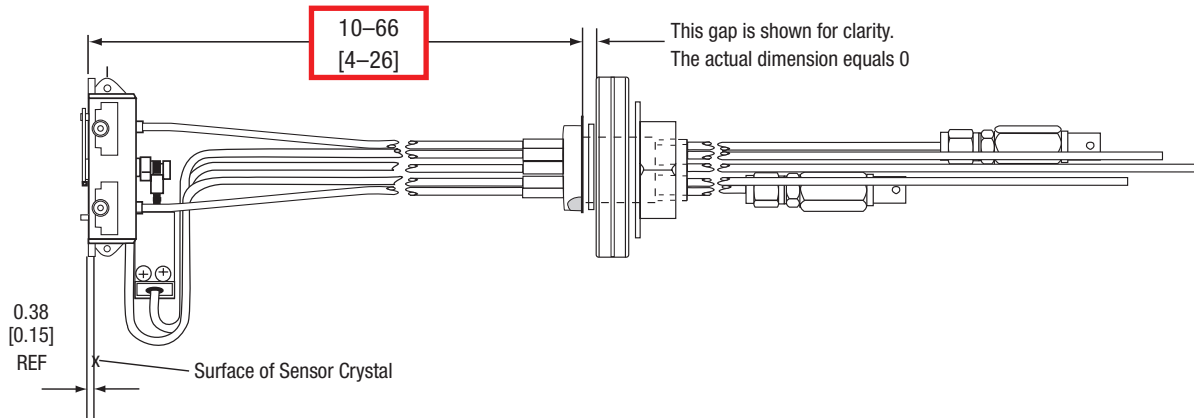
NOTE: Measurements in cm [in.]



DIMENSIONS

Sensor length specification for CDD-BF47-XX sensor / feedthrough combination

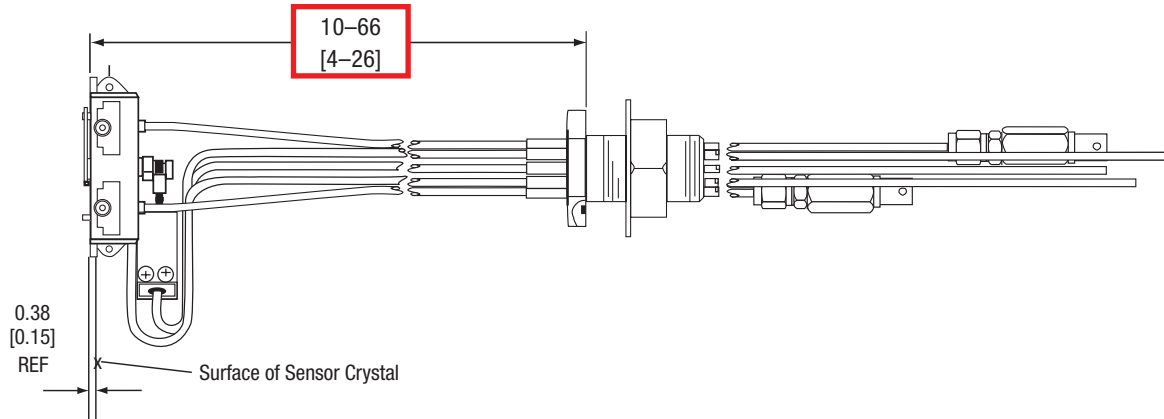
NOTE: Measurements in cm [in.]



DIMENSIONS

Sensor length specification for CDD-BF37-XX sensor / feedthrough combination

NOTE: Measurements in cm [in.]



www.inficon.com reachus@inficon.com

Due to our continuing program of product improvements, specifications are subject to change without notice. Cool Drawer is a trademark of INFICON. All other trademarks are the property of their respective owners.

cibe12a1-d ©2026 INFICON