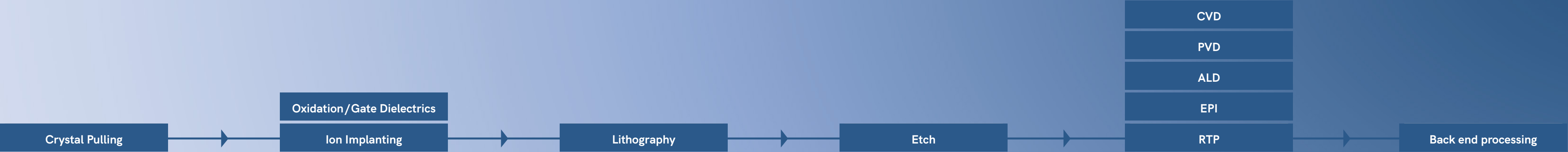


INFICON Vacuum Instrumentation & Components.

The one stop shop for
SEMI applications.



Product overview.



PROCESS PRESSURE CONTROL

- Capacitance Family

SYSTEM PRESSURE CONTROL

- Capacitance, Pirani Family
- Fittings

PROCESS PRESSURE CONTROL

- Capacitance Family

SYSTEM PRESSURE CONTROL

- Cold Cathode, Pirani Family
- Fittings

SYSTEM PRESSURE CONTROL

- Capacitance, Pirani, Hot Ion, Cold Cathode Family
- Fittings

PROCESS PRESSURE CONTROL

- Capacitance Family

SYSTEM PRESSURE CONTROL

- Capacitance, Pirani, Hot Ion, Cold Cathode Family
- Fittings
- Heated Components

PROCESS PRESSURE CONTROL

- Capacitance, Pirani Family

SYSTEM PRESSURE CONTROL

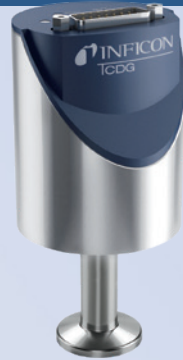
- Capacitance, Pirani, Hot Ion, Cold Cathode Family
- Fittings

CAPACITANCE DIAPHRAGM GAUGE



**PORTER®
CDG020D**

- More gauge for less
- Smallest in class
- Outstanding stability



**SKY®
CDG025D**

- Unprecedented Full scale stability
- Environmental independence
- Adaptable sensor integration



**SKY® HEATED
CDG045D – CDG200D**

- Excellent long term stability
- Outstanding span and zero stability
- High accuracy
- Gas type independent



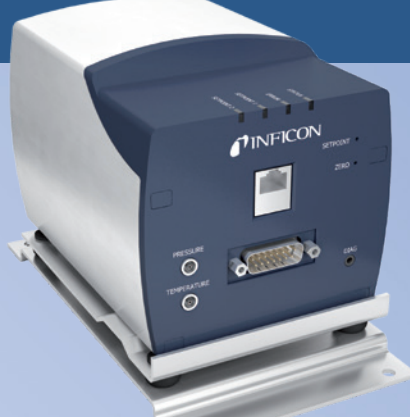
**STRIPE®
CDG045Dhs –
CDG100Dhs**

- Faster than 2 ms response time
- Proven ceramic sensor
- Excellent long term stability



**EDGE®
CDG025D2, CDG045D2
CDG100D2**

- Smallest instrument in class
- Proven ceramic sensor
- High precision measurement



**CUBE®
CDGsci**

- True high precision pressure measurement
- Full stable output
- Flexible communication



**GEMINI®
COLD CATHODE GAUGE
MAG5XX, MPG5XX**

- Long lifetime in harsh environments
- Zero maintenance
- Excellent ignition properties



**PIRANI CAPACITANCE COM-
BINATION GAUGE PCG55x**

- Double sensor technology
- Tungsten, Nickel or fully-ceramic coated sensor
- High accuracy and gas type independence above 10 mbar



**PIRANI
PSG5xx**

- Stainless steel measuring cell
- Streamlined design
- Replaceable sensor



**HOT ION GAUGE
BPG, BCG, HPG, BAG**

- Triple sensor technology
- 13 decades in one sensor; saves cost and tool space
- Long lifetime



FITTINGS

- Industrial designed valves
- High quality fittings

HEATED COMPONENTS AND ASSEMBLIES

- Fully vulcanized surface heater
- Customized design with molded hard shell covers
- Cool to the touch surface



Excellent Customer Support is a Commitment

INFICON provides a global network of sales and service centers. These centers are staffed with local service and application experts who can assist you in choosing the best solution for your individual product application and provide fast support if service is needed.



Americas

United States

INFICON Inc.
East Syracuse, NY
Phone : +1 315 434 1100
E-mail : reach.us@inficon.com

Mexico

INFICON Mexico
Santiago de Querétaro, Qro.
Phone : +52 (442) 980 00 80
E-mail : reach.mexico@inficon.com

Europe, Middle East and Africa

INFICON GmbH
Cologne
Phone : +49 221 567 881 00
E-mail : reach.germany@inficon.com

Asia and Pacific

China

INFICON Ltd.
Beijing
Phone : +86 10 6590 0164
E-mail : reach.china@inficon.com

Japan

INFICON Co. Ltd.
Kawasaki-shi, Kanagawa-ken
Phone : +81 44 822 1111
E-mail : reach.japan@inficon.com

Korea

INFICON Ltd.
Gyeonggi-do
Phone : +82 31 783 2942
E-mail : reach.korea@inficon.com

Singapore, South Asia and Australia / New Zealand

INFICON PTE Ltd.
Singapore
Phone : +65 6631 0300
E-mail : reach.singapore@inficon.com

Taiwan

INFICON Co. Ltd.
Chupei City
Phone : +886 3 552 5828
E-mail : reach.taiwan@inficon.com



www.inficon.com reachus@inficon.com

Due to our continuing program of product improvements, specifications are subject to change without notice.
©12-2023 INFICON