



Clean Vacuum Components

Different Cleanliness
classes available



The highest purity available for today's demanding applications

INFICON meets the highest requirements for cleanliness of vacuum components imperative for certain manufacturing processes in the vacuum sector. INFICON offers three classes of cleanliness, depending on your particular application.

Standard: High quality vacuum components

Cleaned: additional cleaning and cleanroom packaging

Coated: additional ALD coating and cleanroom packaging

APPLICATIONS

- OLED processes
- Gas lines
- Critical process exposed parts

ADVANTAGES AT A GLANCE

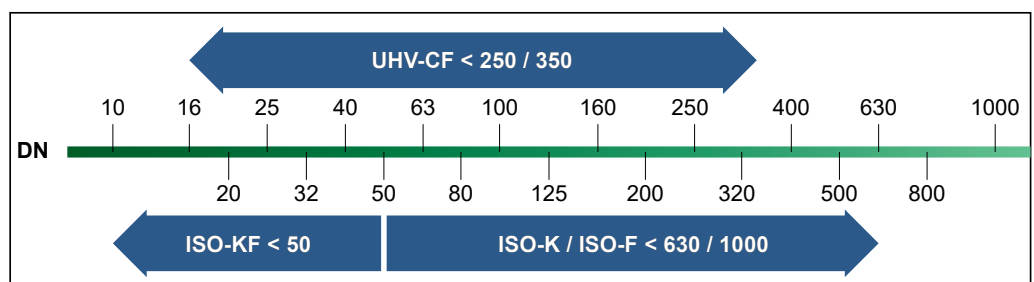
- Reduce particles to particle free
- Longer life for your vacuum components
- Reduces maintenance for greater cost savings
- High quality vacuum components
- 100% leak tested to less than 1×10^{-9} mbar l/s
- Cleanroom packaging



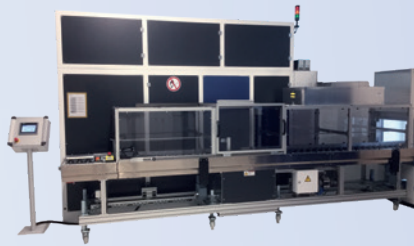


Vacuum Components

OVERVIEW STANDARD OF FLANGE



SINGLE-CHAMBER CLEANING TOOL

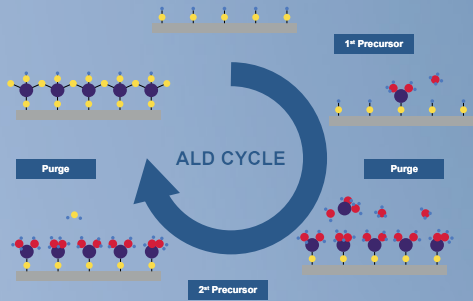


CLEANROOM PACKAGING

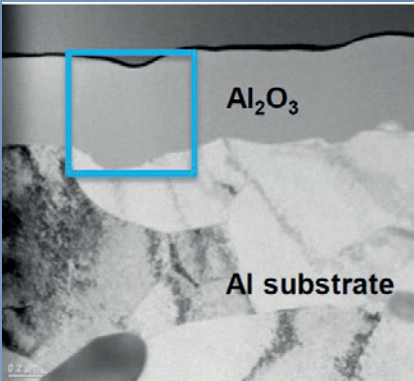
Protection against contamination



ALD = ATOMIC LAYER DEPOSITION



COATING THICKNESS STANDARD: 250 NM



FLANGE TYPES

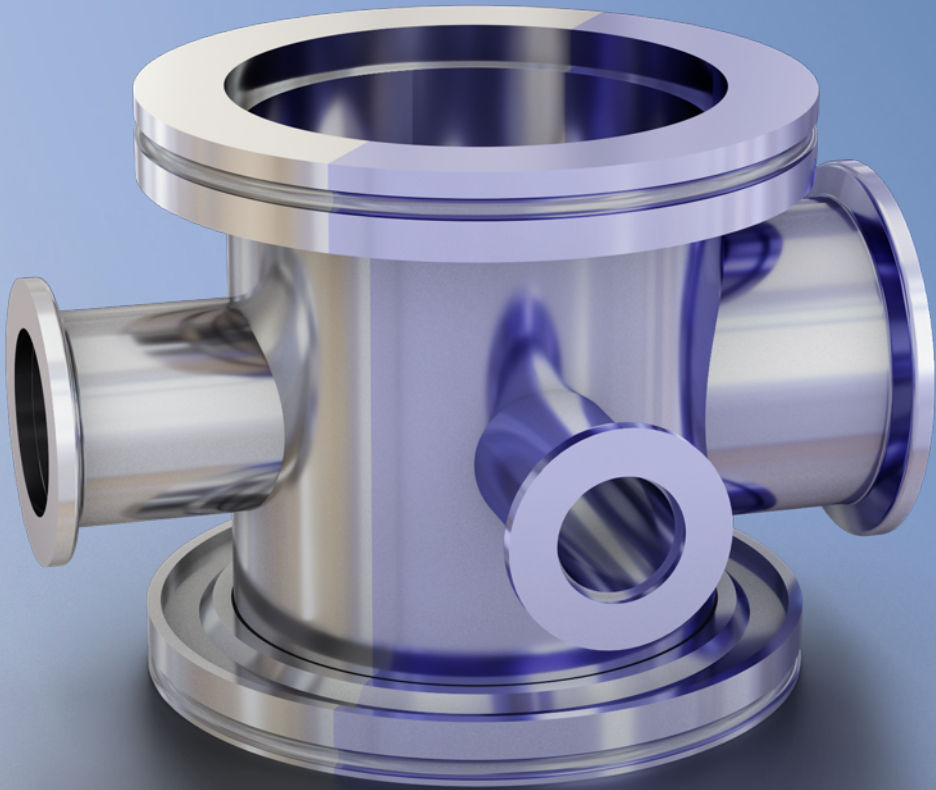
ISO-KF Fitting



ISO-K / ISO-F Fitting

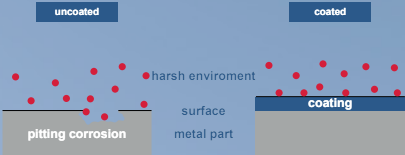


CF Fitting



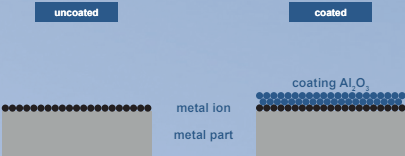
COATED = CHEMICAL RESISTANCE

Excellent corrosion resistance in fluorine chemical or plasma environments and most acids.



COATED = METAL ION FREE

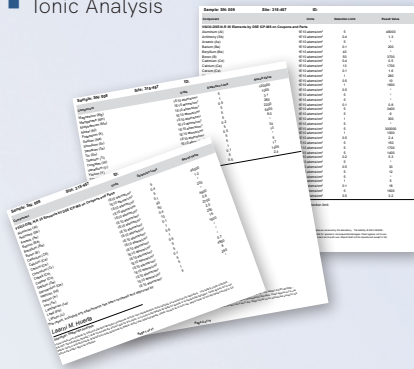
Al₂O₃ coating avoids metal ions on the surface, which is important for SEMI and analytics applications.



ANALYSIS

Further information about following analysis is available.

- Particle Analysis
- Organic Outgas Analysis
- Trace Metals Analysis
- Ionic Analysis



REDUCED PARTICLE UP TO PARTICLE-FREE



COATED BENEFITS

- Tool up-time through long life components
- Low cost of ownership
- Enables new process options
- Longer maintenance intervals = cost savings
- Faster pump down - no out baking
- Coating on 3D structures with high aspect ratios
- Longer lifetime of corrosion sensitive equipment

COATED FEATURES

- Diffusion barrier
- Dense, amorphous and pin-hole free
- Highly conformal and uniform

Excellent Customer Support is a Commitment

INFICON provides a global network of sales and service centers. These centers are staffed with local service and application experts who can assist you in choosing the best solution for your individual product application and provide fast support if service is needed.



Americas

INFICON Inc.
East Syracuse, NY
Phone : +1 315 434 1100
E-mail : reach.us@inficon.com

Europe, Middle East and Africa

INFICON GmbH
Cologne
Phone : +49 221 567 881 00
E-mail : reach.germany@inficon.com

Asia and Pacifica

China
INFICON Ltd.
Beijing
Phone : +86 10 6590 0164
E-mail : reach.china@inficon.com

Japan
INFICON Co. Ltd.
Kawasaki-shi, Kanagawa-ken
Phone : +81 44 822 1111
E-mail : reach.japan@inficon.com

Korea
INFICON Ltd.
Gyeonggi-do
Phone : +82 31 783 2942
E-mail : reach.korea@inficon.com

Singapore and Australia
INFICON PTE Ltd.
Singapore
Phone : +65 6631 0300
E-mail : reach.singapore@inficon.com

Taiwan
INFICON Co. Ltd.
Chupei City
Phone : +886 3 552 5828
E-mail : reach.taiwan@inficon.com



www.inficon.com reachus@inficon.com

Due to our continuing program of product improvements, specifications are subject to change without notice.
©12-2023 INFICON