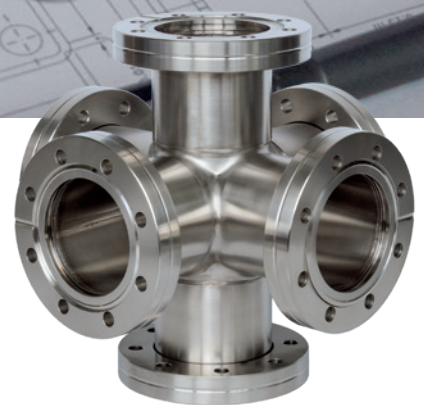


The Component Family

High vacuum and ultra-high vacuum fittings & feedthroughs



 **INFICON**
Inspired by visions. Proven by success.

Superior quality at a competitive price

Vacuum components are parts for vacuum systems, which are used for building a vacuum system and necessary to build vacuum lines. The INFICON family of fittings and feedthroughs include: **Flanges, Seals, Flange Tubes** (Elbows, Tees, Cross Pieces etc.) as well as **Feedthroughs** (mechanical, electrical, liquid) and **Viewports**.

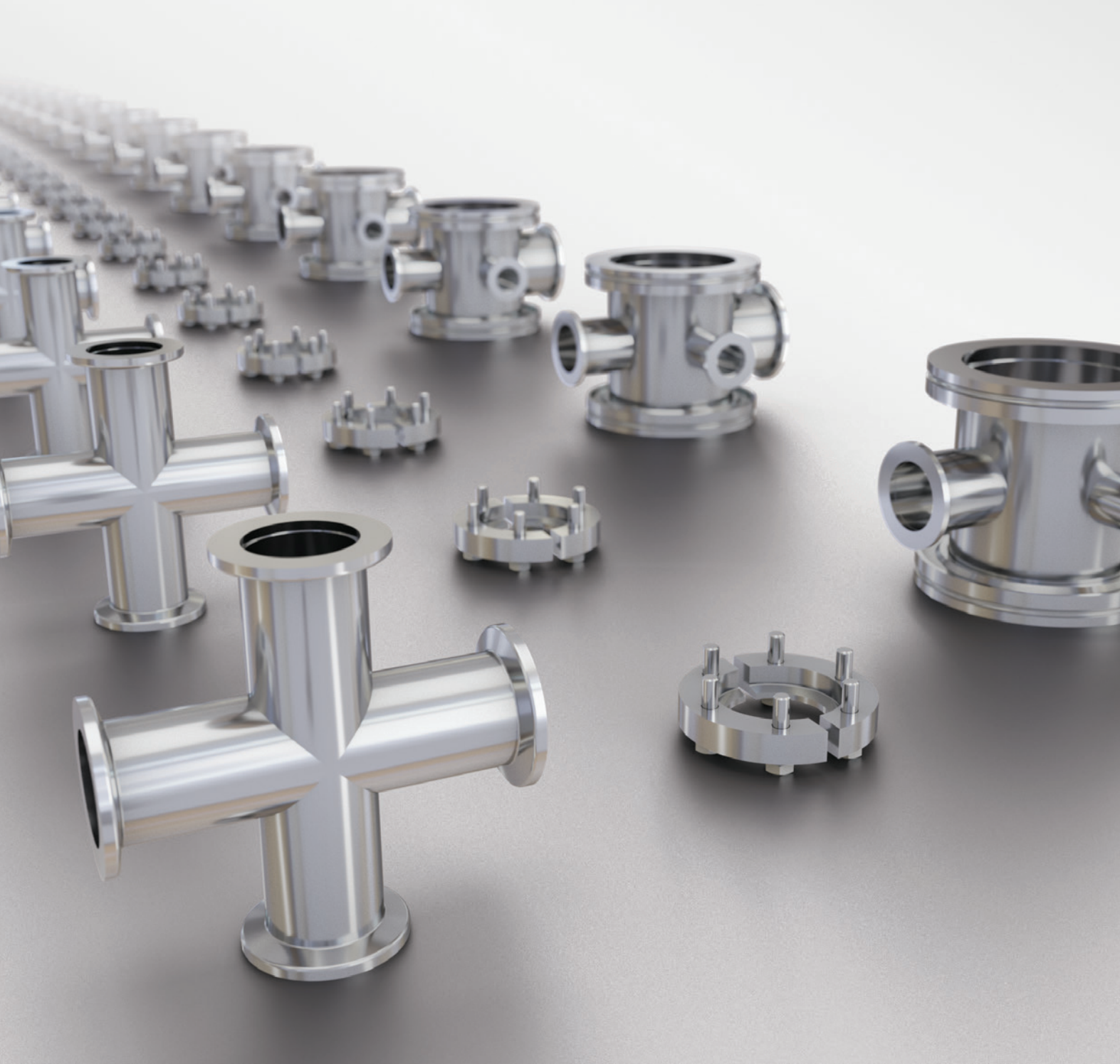


INFICON offers a wide range of standard vacuum components for demanding applications.

ADVANTAGES AT A GLANCE

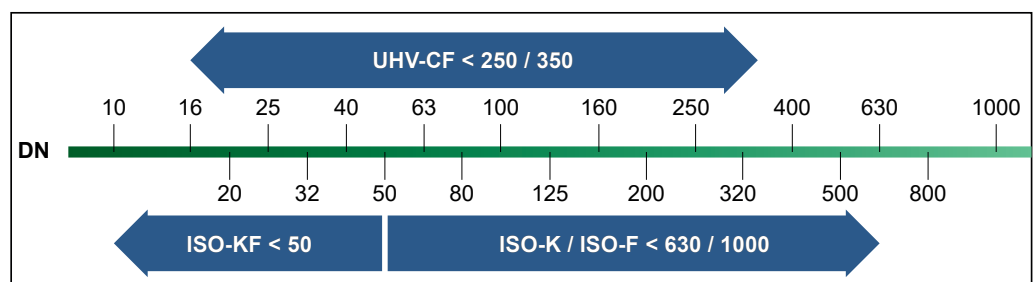
- Competitively priced
- High quality
- Wide range of vacuum components
- Most components are available directly from stock for immediate worldwide delivery
- Surface finish, welds, material specifications and cleanliness meet or exceed high vacuum specifications
- 100% leak tested to less than 1×10^{-9} mbar l/s
- Design and measures follow strict international standards





Components

OVERVIEW STANDARD OF FLANGE





**ISO-KF FITTING FAMILY
DN 10 TO DN 50**

INFICON ISO-KF fittings are manufactured according to ISO 2861/1, DIN 28403 and Pneurop 6606. These quality fittings are the standard vacuum components for all vacuum and high vacuum applications. They are designed and tested for leak rates less than 1×10^{-9} mbarl/s.

- This line includes a wide range of:
- connecting elements
 - seals and centering rings
 - flanges
 - pipe fittings
 - metal bellows and hoses
 - PVC and rubber hoses
 - transition pieces/ reducers

ISO-KF fittings are available in aluminum or stainless steel 304 or 316L.



**ISO-K / ISO-F FITTING FAMILY
DN 63 TO DN 630 / 1000**

INFICON ISO-K quality fittings are manufactured according to ISO 1609, DIN 28404 and Pneurop 6606. These large diameter fittings are the standard vacuum components for all vacuum and high vacuum lines. They are designed and tested for leak rates less than 1×10^{-9} mbarl/s.

- This line includes a wide range of:
- clamp & claw connecting elements
 - seals & centering rings (up to DN 1000)
 - flanges
 - pipe fittings
 - metal bellows and hoses
 - transition pieces/ reducers
 - collar flanges with retaining ring (ISO-F)

ISO-K/ISO-F fittings are available in stainless steel 304 or 316L. Partly aluminum and nickel plated steel is also available.



**ELECTRICAL
FEEDTHROUGH FAMILY
DN 16 TO DN 40**

INFICON offers economically priced ISO-KF flanged feedthroughs which can be found in all standard vacuum applications. In addition to these feedthroughs, a choice of connectors for the vacuum and atmosphere side of the vacuum chamber is configured.

For UHV applications, CF flanged feedthroughs are available in different sizes and technical specifications.

For special demand, our BNC/MHV Coaxial Feedthroughs, based on MIL-C-39012A, are available in 3 different flange design / sizes and in 5 different specification ranges.



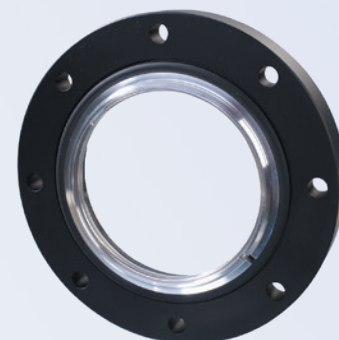
**CF FITTING FAMILY
DN 16 TO DN 250 / 350**

INFICON CF quality fittings are manufactured according to ISO 3669 and the latest ISO 3669:2017 standard.

These ultra-high vacuum fittings are designed for UHV applications down to 1×10^{-12} mbar and bakeout temperatures up to 400°C.

- This line includes a wide range of:
- connecting elements
 - all metal gaskets
 - flanges
 - pipe fittings
 - metal bellows and hoses
 - transition pieces/ reducers

This line is available in stainless steel 304L or in the higher graded 316LN.



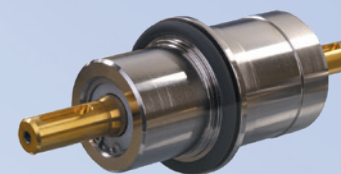
**VIEWPORT FAMILY
DN 16 TO DN 160**

A wide range of industrial approved viewports are suitable for nearly all applications where a view port is needed.

- Viewports are available in:
- borosilicate glass
 - sapphire glass

Available flange designs ISO-KF / ISO-K / ISO-F and CF match with our fitting line.

All viewports are leak tested to less than 1×10^{-9} mbarl/s. For UHV needs, the CF flanged and metal sealed UHV viewports are best suited.



**MECHANICAL
FEEDTHROUGH FAMILY
DN 16 TO DN 63**

A huge variety of mechanical feedthroughs offers the right device for demanding applications, for example, in an OEM customers coating chamber or in your applied research project under laboratory conditions.

- Mechanical feedthroughs are available as:
- rotary feedthrough
 - rotary/linear combination feedthrough
 - linear feedthrough

Available flange designs ISO-KF / ISO-K and CF corresponds to our fitting line. All feedthroughs are designed to work in vacuum systems with leak rates up to 1×10^{-9} mbarl/s. For UHV, an all metal feedthrough is available.

Excellent Customer Support is a Commitment

INFICON provides a global network of sales and service centers. These centers are staffed with local service and application experts who can assist you in choosing the best solution for your individual product application and provide fast support if service is needed.



Americas

United States

INFICON Inc.
East Syracuse, NY
Phone : +1 315 434 1100
E-mail : reach.us@inficon.com

Mexico

INFICON Mexico
Santiago de Querétaro, Qro.
Phone : +52 (442) 980 00 80
E-mail : reach.mexico@inficon.com

Europe, Middle East and Africa

INFICON GmbH
Cologne
Phone : +49 221 567 881 00
E-mail : reach.germany@inficon.com

Asia and Pacific

China

INFICON Ltd.
Beijing
Phone : +86 10 6590 0164
E-mail : reach.china@inficon.com

Japan

INFICON Co. Ltd.
Kawasaki-shi, Kanagawa-ken
Phone : +81 44 822 1111
E-mail : reach.japan@inficon.com

Korea

INFICON Ltd.
Gyeonggi-do
Phone : +82 31 783 2942
E-mail : reach.korea@inficon.com

Singapore, South Asia and Australia / New Zealand

INFICON PTE Ltd.
Singapore
Phone : +65 6631 0300
E-mail : reach.singapore@inficon.com

Taiwan

INFICON Co. Ltd.
Chupei City
Phone : +886 3 552 5828
E-mail : reach.taiwan@inficon.com



www.inficon.com reachus@inficon.com

Due to our continuing program of product improvements, specifications are subject to change without notice.
©12-2023 INFICON