

# VVH010-A/X

## Manually Actuated Venting Valve

### ADVANTAGES

- Simple opening and closing of the valve by loosening or tightening the screw cap



### SELECTION DATA

Vacuum connection		DN 10 ISO-KF	DN 10 ISO-KF
Housing	AISI / DIN	aluminum / 3.0615	stainless steel 303 / 1.4305

### ORDERING INFORMATION

Type	<b>VVH010-A</b>	<b>VVH010-X</b>
Part No.	<b>250-840</b>	<b>250-841</b>

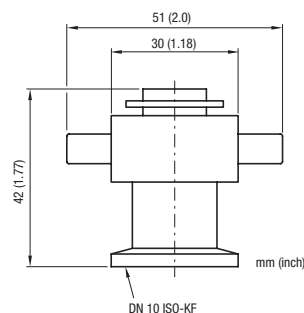
### SPECIFICATIONS

Tightness	mbar l/s	$1 \times 10^{-9}$	$1 \times 10^{-9}$
Pressure (absolute)	mbar/bar	$1 \times 10^{-8} / 1$	$1 \times 10^{-8} / 1$
Valve plate		aluminum	stainless steel 304 / 1.4301
Screw cap		brass nickel-plated	brass nickel-plated
Seal		FPM	FPM
Weight	kg	0.1	0.15

### SPARE PARTS

O-ring	<b>B 4070 207 PV</b>	<b>B 4070 207 PV</b>
--------	----------------------	----------------------

### DIMENSIONS





**GLOBAL HEADQUARTERS:**

---

Two Technology Place, East Syracuse, NY 13057 USA  
Tel: +1.315.434.1100 Fax: +1.315.437.3803 E-mail: reachus@inficon.com

**UNITED STATES FRANCE GERMANY LIECHTENSTEIN SWITZERLAND UNITED KINGDOM CHINA JAPAN KOREA SINGAPORE TAIWAN**

Visit our website for contact information and other sales offices worldwide. [www.inficon.com](http://www.inficon.com)  
Due to our continuing program of product improvements, specifications are subject to change without notice.  
siba31e1-a (2008-05) ©2008 INFICON Inc.