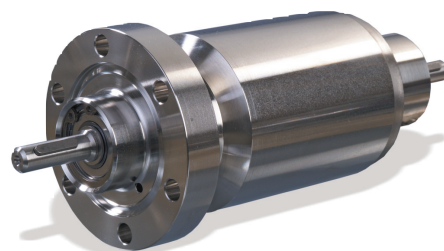


FRU DN 16 – DN 40

Rotary Feedthroughs CF

PROPERTIES

- ◆ Bellow sealed
- ◆ All-metal version
- ◆ For very demanding vacuum requirements



SELECTION DATA

	DN 16 CF-F	DN 40 CF-F	DN 40 CF-F
Vacuum connection	DN 16 CF-F	DN 40 CF-F	DN 40 CF-F
Feedthrough / seal	bellow	bellow	bellow
Shaft connection	4 mm	8 mm	12 mm

ORDERING INFORMATION

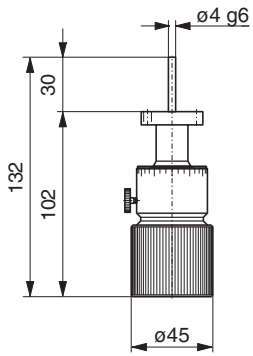
Type	FRU016-H	FRU040-N	FRU040-L
Part No.	214-310	214-312	214-314

SPECIFICATIONS

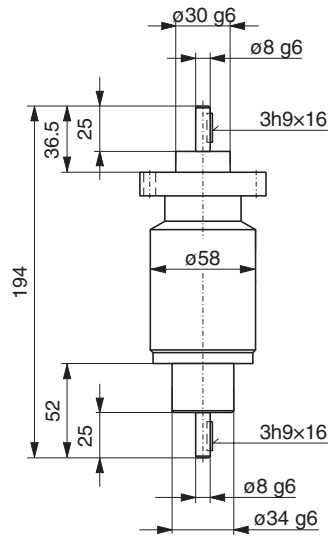
Transferable torque				
Dynamic	Nm	0.4	4	10
Dynamic, at 300 °C	Nm	0.2	2	2
Static	Nm	0.2	3	5
Rotational speed	rpm	200	1000	500
At max. torque	rpm		500	300
Shaft load vacuum sided				
Radial force	N	10	60	100
Axial force	N	5	20	30
Service life	Revolutions	1 000 000	2 000 000	1 000 000
Scale division	Degree	10	–	–
Tightness	mbar l/s	5 x 10 ⁻¹¹		
Pressure (absolute)		1 x 10 ⁻¹⁰ mbar ... 2 bar		
Operating temperature	°C	300		
Bakeout temperature	°C	300		
Materials exposed to process media		304L/1.4306 304/1.4301 –/2.4360	304L/1.4306 304/1.4301 –/2.4360	304L/1.4306 304/1.4301 303/1.4305
Weight	kg	0.3	1.5	3.0

DIMENSIONS

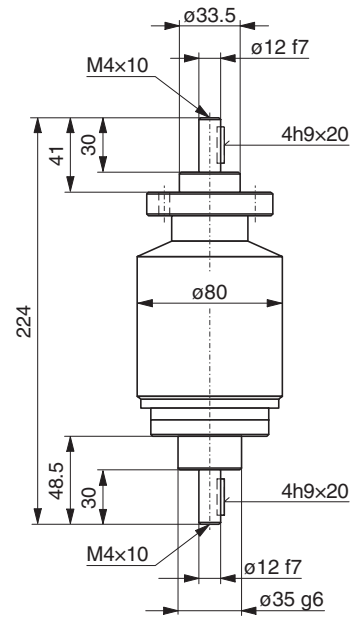
FRU016-H



FRU040-N



FRU040-L



[mm]



GLOBAL HEADQUARTERS:

Two Technology Place, East Syracuse, NY 13057 USA
 Tel: +1.315.434.1100 Fax: +1.315.437.3803 E-mail: reachus@inficon.com

UNITED STATES FRANCE GERMANY LIECHTENSTEIN SWITZERLAND UNITED KINGDOM CHINA JAPAN KOREA SINGAPORE TAIWAN

Visit our website for contact information and other sales offices worldwide. www.inficon.com
 Due to our continuing program of product improvements, specifications are subject to change without notice.
 riba02e1-a (2008-05) ©2008 INFICON Inc.