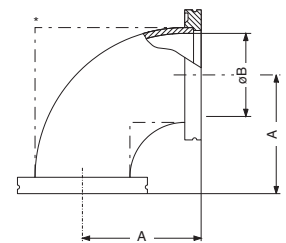


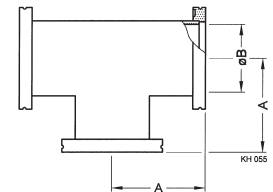
PIPE FITTINGS

ISO-K Clamp Flange Components

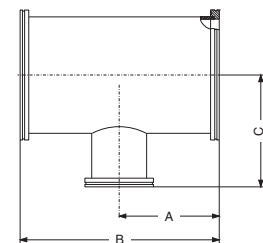
ELBOW 90°	DN ... ISO-K	Part No.	A	B
Stainless steel 304/-	63	212-101	88	66
	100	212-102	108	100
	160*	212-103	138	150
	200*	212-104	178	213
	250*	212-105	208	250
	320*	212-106	250	318



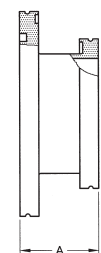
TEE	DN ... ISO-K	Part No.	A	B
Stainless steel 304/-	63	212-111	88	66
	100	212-112	108	100
	160	212-113	138	150
	200	212-114	178	213
	250	212-115	208	250
	320	212-116	250	318



REDUCING TEE	DN ... ISO-K	Part No.	A	B	C
Stainless steel 304/-	160/63	212-196	138	276	130
	160/100	212-197	138	276	131
	250/200	212-198	190	380	208

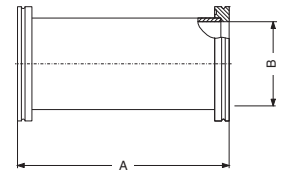


REDUCER	DN ... ISO-K	Part No.	A
Stainless steel 303/-	80/63	212-084	50
	100/63	212-161	50
	160/100	212-163	50
	250/200	212-170	50



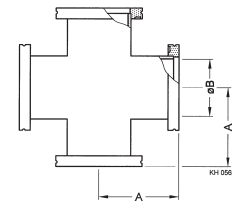
INTERMEDIATE PIECE

	DN ... ISO-K	Part No.	A	B
Stainless steel 304/-	63	212-191	100	70
	63	212-192	176	70



CROSS

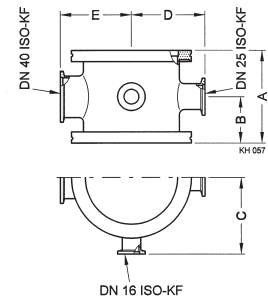
	DN ... ISO-K	Part No.	A	B
Stainless steel 304/-	63	212-121	88	66
	100	212-122	108	100
	160	212-123	138	150
	200	212-124	178	213
	250	212-125	208	250



REDUCING CROSS

	DN ... ISO-K	Part No.	A	B	C	D	E
Stainless steel 304/-	63	212-131	88	44	66	64	59
	100	212-132	100	50	82	80	77
	160	212-133	100	50	107	107	105

1 x DN 16 ISO-KF, 1 x DN 25 ISO-KF, 1 x DN 40 ISO-KF



GLOBAL HEADQUARTERS:

Two Technology Place, East Syracuse, NY 13057 USA
 Tel: +1.315.434.1100 Fax: +1.315.437.3803 E-mail: reachus@inficon.com

UNITED STATES FRANCE GERMANY LIECHTENSTEIN SWITZERLAND UNITED KINGDOM CHINA JAPAN KOREA SINGAPORE TAIWAN

Visit our website for contact information and other sales offices worldwide. www.inficon.com
 Due to our continuing program of product improvements, specifications are subject to change without notice.
 qiba11e1-b (2008-05) ©2008 INFICON Inc.