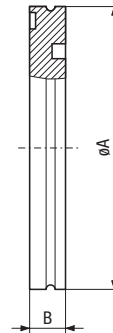


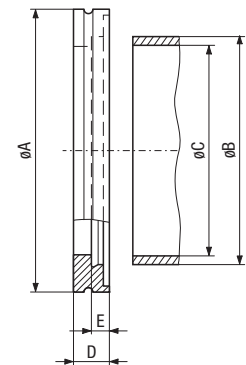
# FLANGES

## ISO-K Clamp Flange Components

<b>BLANK FLANGE</b>	DN ... ISO-K	Part No.	A	B
Aluminum EN AW-6082 T6	63	<b>212-441</b>	95	12
	100	<b>212-442</b>	130	12
	160	<b>212-443</b>	180	12
	200	<b>212-444</b>	240	12
	250	<b>212-445</b>	290	12
	320	<b>212-446</b>	370	17
Steel nickel plated A570/-	63	<b>212-001</b>	95	12
	100	<b>212-002</b>	130	12
	160	<b>212-003</b>	180	12
	250	<b>212-005</b>	290	12
Stainless steel 304/-	63	<b>212-011</b>	95	12
	80	<b>212-076</b>	110	12
	100	<b>212-012</b>	130	12
	160	<b>212-013</b>	180	12
	200	<b>212-014</b>	240	12
	250	<b>212-015</b>	290	12
	320	<b>212-016</b>	370	17
	400	<b>212-017</b>	450	17
	500	<b>212-018</b>	550	17
	630	<b>212-019</b>	690	22



<b>WELDING FLANGE</b>	DN ... ISO-K	Part No.	A	B	C	D	E
Steel -/1.0570	63	<b>212-021</b>	95	76.1	70.3	12	6
	100	<b>212-022</b>	130	108	102.2	12	6
Steel A570/-	160	<b>212-023</b>	180	159	153.2	12	6
	250	<b>212-025</b>	290	267	261	12	6
Stainless steel 304/-	63	<b>212-031</b>	95	76.1	71.5	12	6
	80	<b>212-078</b>	110	88.9	84.9	12	6
	100	<b>212-032</b>	130	108	102	12	6
	160	<b>212-033</b>	180	159	155	12	6
	200	<b>212-034</b>	240	219.1	213.9	12	6
	250	<b>212-035</b>	290	267	261	12	6
	320	<b>212-036</b>	370	324	318	17	8.5
Stainless steel 304/-	250	<b>212-385</b>	290	261	254	12	6
	250	<b>212-505</b>	290	273	261	12	5



## FLANGE WITH TUBE

	DN ... ISO-K	Part No.	A	B	C
Flange: steel -/1.0570	63	<b>212-041</b>	100	76.1	70.3
Tube: steel -/1.0831	100	<b>212-042</b>	100	108	102.2
	160	<b>212-043</b>	100	159	153.2
	250	<b>212-045</b>	100	267	261
Stainless steel 304/-	63	<b>212-051</b>	100	76.1	71.5
	100	<b>212-052</b>	100	108	104
	160	<b>212-053</b>	100	159	155
	200	<b>212-054</b>	100	219.1	213.1
	250	<b>212-055</b>	100	267	261
	320	<b>212-056</b>	100	324	318
	400	<b>212-057</b>	100	406	400
	500	<b>212-058</b>	100	508	500
	630	<b>212-059</b>	100	660	650
Stainless steel 304/-	250	<b>212-506</b>	100	273	267

