

# HOSE, HOSE CONNECTION

## ISO-KF Small Flange Components

HOSE ADAPTER 90°	DN ... ISO-KF	Part No.	A	B	C	D
Aluminum 6082/-	16	<b>211-257</b>	40	40	16	13
	25	<b>211-258</b>	50	50	25	22
	40	<b>211-259</b>	65	65	40	37

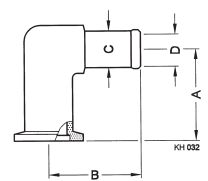
HOSE ADAPTER FOR RUBBER HOSE	DN ... ISO-KF	Part No.	A	B	C
Aluminum 6082/-	16	<b>211-387</b>	40	7	12
	25	<b>211-388</b>	40	7	12
	40	<b>211-389</b>	40	7	12
Stainless steel 303/1.4305	16	<b>211-392</b>	40	7	12
	25	<b>211-393</b>	40	7	12
	40	<b>211-394</b>	40	7	12

HOSE CONNECTION	DN ... ISO-KF	Part No.	A	B	C
Aluminum 6082/-	25	<b>211-401</b>	40	13	16
	16	<b>211-402</b>	40	13	16
	25	<b>211-403</b>	40	22	25
	40	<b>211-404</b>	40	37	40

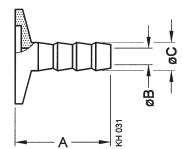
SLEEVE WITH HOSE CLAMP	DN ... ISO-KF	Part No.	A	B	C	D	E
Hose clamp: Stainless steel 430/-	16	<b>211-417</b>	58	7	14	16	44
Sleeve: Elastomer CR	25	<b>211-418</b>	60	9	16	25	50
Max. internal pressure: 1 bar	40	<b>211-419</b>	64	13	20	40	68

HOSE CLAMP	DN ... ISO-KF	Part No.	A	B
Stainless steel 430/-	16	<b>211-461</b>	13	32
	25	<b>211-462</b>	19	44
	40	<b>211-463</b>	29	76

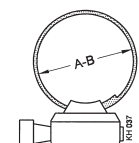
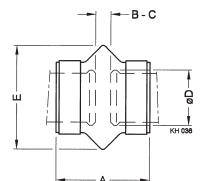
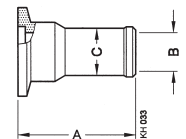
C = nominal connection for sleeve / hose



C = nominal connection for hose

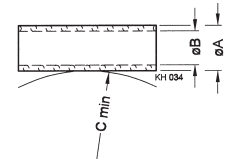


C = nominal connection for sleeve / hose



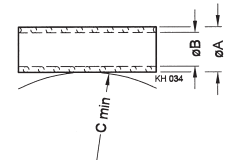
## PVC HOSE

	DN ... ISO-KF	Part No.	A	B	C
With cast in spiral	16	<b>211-442</b>	23	16	130
	25	<b>211-443</b>	33	25	200
For vacuum applications Indicate length in meters	40	<b>211-444</b>	53	40	260



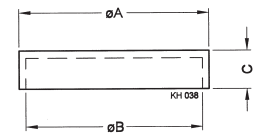
## RUBBER HOSE

	DN ... ISO-KF	Part No.	A	B
For vacuum applications	10	<b>211-451</b>	17	7
Indicate length in meters	16	<b>211-452</b>	25	10
Hardness: 55 ± 5 Shore A Temperature: -30 to +85 °C	20	<b>211-453</b>	32	16



## PROTECTIVE LID

	DN ... ISO-KF	Part No.	A	B	C
Polyethylene	10-16	<b>211-427</b>	32	29	7.5
	20-25	<b>211-428</b>	42	39	7.5
	32-40	<b>211-429</b>	57	54	7.5
	50	<b>211-430</b>	77	74	7.5



### GLOBAL HEADQUARTERS:

Two Technology Place, East Syracuse, NY 13057 USA  
 Tel: +1.315.434.1100 Fax: +1.315.437.3803 E-mail: reachus@inficon.com

UNITED STATES FRANCE GERMANY LIECHTENSTEIN SWITZERLAND UNITED KINGDOM CHINA JAPAN KOREA SINGAPORE TAIWAN

Visit our website for contact information and other sales offices worldwide. [www.inficon.com](http://www.inficon.com)  
 Due to our continuing program of product improvements, specifications are subject to change without notice.  
 qiba07e1-b (2007-02) ©2007 INFICON Inc.