

# BELLOWS/HOSE WITH FLANGES

## ISO-KF Small Flange Components

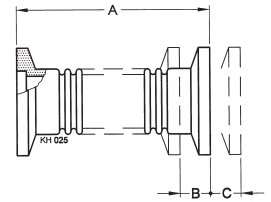
### BELLOWS

	DN ... ISO-KF	Part No.	A	B	C	D
Flanges: Stainless steel 304/1.4301	10	<b>211-326</b>	70	3.5	3	23°
Bellow: Stainless steel 316Ti/-	16	<b>211-327</b>	70	6.4	4.1	21°
	25	<b>211-328</b>	80	8	5	17°
	40	<b>211-329</b>	100	11	7	15°
	50	<b>211-330</b>	100	10	6	15°

A = unstressed length

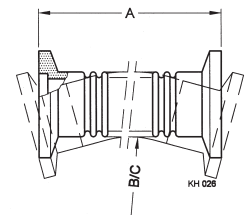
D = max. deviation from axis

Max. internal pressure: 4 bar



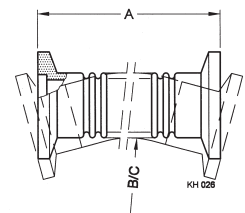
### METAL HOSE

	DN ... ISO-KF	Part No.	A	B	C
Flanges: Stainless Steel 304/1.4301	10	<b>211-331</b>	250	70	32
Bellow: Stainless steel 316Ti/-	10	<b>211-332</b>	500	70	32
	10	<b>211-333</b>	750	70	32
	10	<b>211-334</b>	1000	70	32
	16	<b>211-335</b>	250	70	50
	16	<b>211-336</b>	500	70	50
	16	<b>211-337</b>	750	70	50
	16	<b>211-338</b>	1000	70	50
	25	<b>211-339</b>	250	100	60
	25	<b>211-340</b>	500	100	60
	25	<b>211-341</b>	750	100	60
	25	<b>211-342</b>	1000	100	60
	40	<b>211-343</b>	250	130	100
	40	<b>211-344</b>	500	130	100
	40	<b>211-345</b>	750	130	100
	40	<b>211-346</b>	1000	130	100
	50	<b>211-347</b>	250	200	130
Max. internal pressure: 4 bar	50	<b>211-348</b>	500	200	130
B = radius for multiple bending	50	<b>211-349</b>	750	200	130
C = radius for single bend	50	<b>211-350</b>	1000	200	130



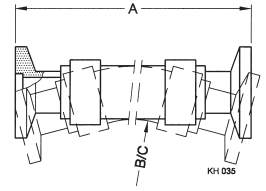
### METAL HOSE FLEXIBLE

	DN ... ISO-KF	Part No.	A	B	C
Flanges: Stainless steel 304/1.4301	16	<b>211-515</b>	250	40	25
Bellow: Stainless steel 316Ti/-	16	<b>211-516</b>	500	40	25
	25	<b>211-519</b>	250	55	36
	25	<b>211-520</b>	500	55	36
	40	<b>211-523</b>	250	90	60
	40	<b>211-524</b>	500	90	60
Max. internal pressure: 2 bar	50	<b>211-527</b>	250	100	65
B = radius for multiple bending	50	<b>211-528</b>	500	100	65
C = radius for single bend	50	<b>211-528</b>	500	100	65



## PVC HOSE

	DN ... ISO-KF	Part No.	A	B	C
Hose: PVC with cast in steel spiral	16	<b>211-406</b>	500	130	65
Nipple: Aluminum 6082/-	16	<b>211-407</b>	1000	130	65
Hose clamp: Stainless steel 430/-	25	<b>211-408</b>	500	200	100
	25	<b>211-409</b>	1000	200	100
B = radius for multiple bending	40	<b>211-410</b>	500	260	130
C = radius for single bend	40	<b>211-411</b>	1000	260	130



### GLOBAL HEADQUARTERS:

Two Technology Place, East Syracuse, NY 13057 USA  
 Tel: +1.315.434.1100 Fax: +1.315.437.3803 E-mail: reachus@inficon.com

UNITED STATES FRANCE GERMANY LIECHTENSTEIN SWITZERLAND UNITED KINGDOM CHINA JAPAN KOREA SINGAPORE TAIWAN

Visit our website for contact information and other sales offices worldwide. [www.inficon.com](http://www.inficon.com)  
 Due to our continuing program of product improvements, specifications are subject to change without notice.  
 qiba05e1-a (2007-02) ©2007 INFICON Inc.