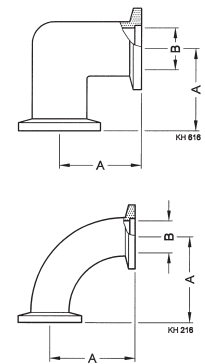


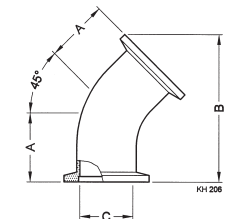
PIPE FITTINGS

ISO-KF Small Flange Components

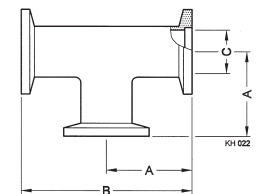
ELBOW 90°	DN ... ISO-KF	Part No.	A	B
Aluminum 6082/-	10	211-251	30	12
	16	211-252	40	16
	25	211-253	50	25
	40	211-254	65	39
Stainless steel 304/1.4301	10	211-286	30	9
	16	211-287	40	15
	25	211-288	50	25
	40	211-289	65	40.5
	50	211-290	70	49



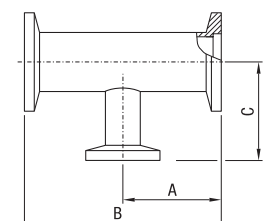
ELBOW 45°	DN ... ISO-KF	Part No.	A	B	C
Stainless steel 304/1.4301	16	211-307	26	55	15
	25	211-308	32	68.8	25
	40	211-309	40	87.7	37



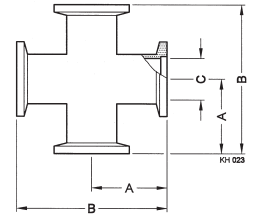
TEE	DN ... ISO-KF	Part No.	A	B	C
Aluminum 6082/-	10	211-261	30	60	12
	16	211-262	40	80	16
	25	211-263	50	100	25
	40	211-264	65	130	39
Stainless steel 304/1.4301	10	211-291	30	60	12
	16	211-292	40	80	16
	25	211-293	50	100	25
	40	211-294	65	130	40.5
	50	211-295	70	140	53



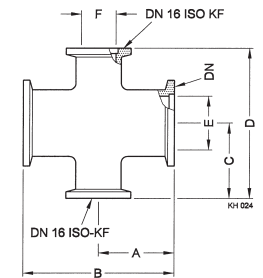
REDUCING TEE	DN ... ISO-KF	Part No.	A	B	C
Stainless steel 304/1.4301	25/16	211-316	50	100	40
	40/16	211-317	65	130	40
	40/25	211-318	65	130	50
	50/16	211-319	70	140	50
	50/25	211-320	70	140	65
	50/40	211-321	70	140	65



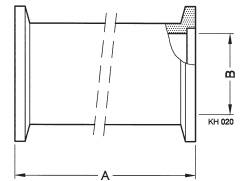
CROSS		DN ... ISO-KF	Part No.	A	B	C
Aluminum 6082/3.2315	10	211-266	30	60	12	
	16	211-267	40	80	16	
	25	211-268	50	100	25	
	40	211-269	65	130	39	
Stainless steel 304/1.4301	10	211-296	30	60	12	
	16	211-297	40	80	16	
	25	211-298	50	100	25	
	40	211-299	65	130	40.5	
	50	211-300	70	140	53	



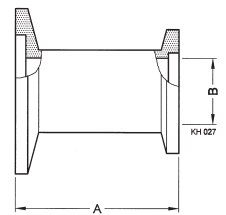
REDUCING CROSS		DN ... ISO-KF	Part No.	A	B	C	D	E	F
Aluminum 6082/3.2315	25	211-271	35	70	35	70	25	16	
	40	211-272	40	80	45	90	39	16	
Stainless steel 304/1.4301	25	211-301	35	70	35	70	25	17	
	40	211-302	40	80	45	90	40.5	16	
	50	211-303	50	100	50	100	53	16	



INTERMEDIATE PIECE		DN ... ISO-KF	Part No.	A	B
Aluminum 6082/-	16	211-227	80	16	
	25	211-228	100	25	
	40	211-229	130	40	
Stainless steel 304/1.4301	16	211-277	80	16	
	25	211-278	100	25	
	40	211-279	130	40.5	
	50	211-280	140	53	



REDUCER		DN ... ISO-KF	Part No.	A	B
Aluminum 6082/-	25/16	211-231	40	16	
	40/16	211-232	40	16	
	40/25	211-233	40	25	
	50/40	211-234	40	40	
Stainless steel 303/1.4305	25/16	211-281	40	16	
	40/16	211-282	40	16	
	40/25	211-283	40	26	
	50/40	211-284	40	40	



GLOBAL HEADQUARTERS:

Two Technology Place, East Syracuse, NY 13057 USA
 Tel: +1.315.434.1100 Fax: +1.315.437.3803 E-mail: reachus@inficon.com

UNITED STATES FRANCE GERMANY LIECHTENSTEIN SWITZERLAND UNITED KINGDOM CHINA JAPAN KOREA SINGAPORE TAIWAN

Visit our website for contact information and other sales offices worldwide. www.inficon.com
 Due to our continuing program of product improvements, specifications are subject to change without notice.
 qiba04e1-b (2007-02) ©2007 INFICON Inc.