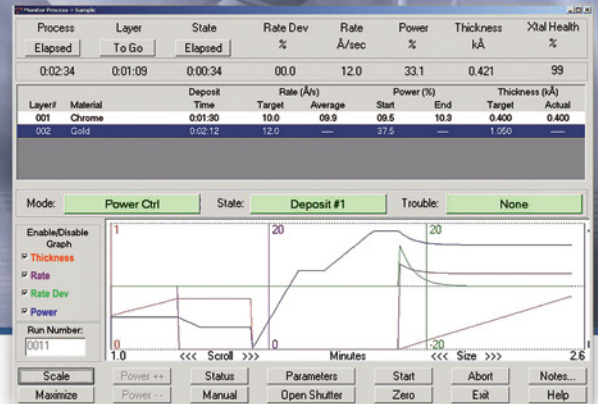


Maxtek DCM-250

Windows® Based
Deposition Control Software



POWERFUL, EASY TO USE SOFTWARE WITH SAFE AND SIMPLE BACKUP

The DCM-250 Deposition Control Manager software provides a complete computer interface for the MDC-260/360C/361C/360/361/370 deposition controllers.

For the system engineer, the DCM makes programming easier with the use of the computer's full size keyboard and large display. All the programming can be done through the computer including processes, materials, inputs, outputs, source setup, etc. The DCM includes extensive context sensitive help to answer your questions on programming and controller operation. More importantly, you can test your program with the DCM's simulation mode.

Once programming is complete, the DCM allows the controller's entire program to be saved and restored with a few mouse clicks for safe and easy backup. You can save any number of these system setup files which makes the DCM perfect for maintaining multiple vacuum systems. You can also print out all the parameter settings from the various programming screens.

For the operator, the DCM provides a simple and easy to use run screen. This screen prominently displays all of the important run-time information including multiple time and status displays. It also includes a section with information for each layer in the process including, the material name, estimated deposit time, target rate, starting power and target thickness. Upon completion of each layer, the DCM shows the average rate, ending power and final thickness.

FEATURES AT A GLANCE

- Compatible with Windows 98/SE/ME/2000/XP
- Context sensitive help
- Backward compatibility with DCM-220 software
- Works with the MDC-260/360C/361C/360/361/370 series deposition controllers

The run screen displays real-time graphs of rate, rate deviation, power and thickness. The graphs can be rescaled, scrolled and even made larger while the process is running. During the run, you can change many of the current layer's parameters including the rate, thickness and PID parameters. You can also check the status of the MDC's inputs, outputs, sensors and sources.

For each process run, the DCM creates a run data file that contains all of the graph data and a text summary of the run. The run file also contains any notes that were added during the process. The text and graphs of the run files can be archived, viewed and printed.

SPECIFICATIONS

Deposition Controller Software

MDC-260/360C/361C/ can have any software version installed.
 MDC-360/361 must have a minimum software version 3.9e installed* to use the DCM-250, but 3.9m or later is required to use the Run Process command. MDC-370 must have software version 1.2 or later installed*.

Pentium 233 MHz or Better

PIII-500 or better is recommended.

Equivalent processors may also be used, but typically require a faster speed for the same performance level.

Windows 98/SE/ME/2000/XP

We recommend you install the latest service pack prior to installing the software. Contact Microsoft for details.

16 MB RAM Minimum

In addition to the operating system requirements, more RAM is recommended with later versions of Windows.

1 Communications Port

Depending on the hardware configuration of the deposition controller, you will need either an RS-232, RS-485, USB or IEEE-488 controller installed in the host computer.

SVGA Monitor

800X600 minimum resolution, 1024X768 or higher recommended.

CD-ROM Drive

Required for installation (unless you download it).

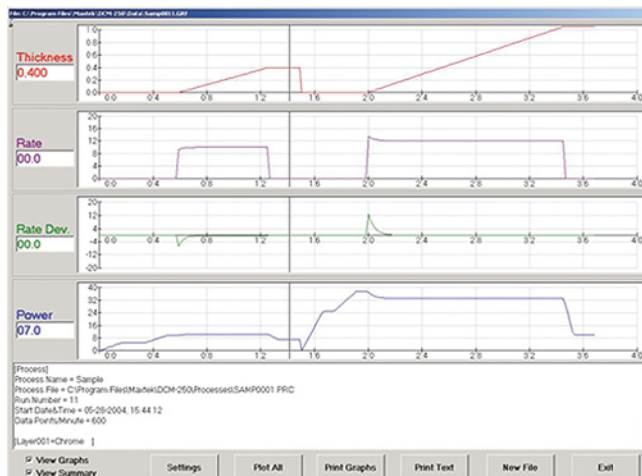
Internet Explorer® 6 or Later

The DCM-250's Help system requires Internet Explorer version 6 or higher to be installed to work properly. If you are using an earlier release, you will need to upgrade prior to using Help.

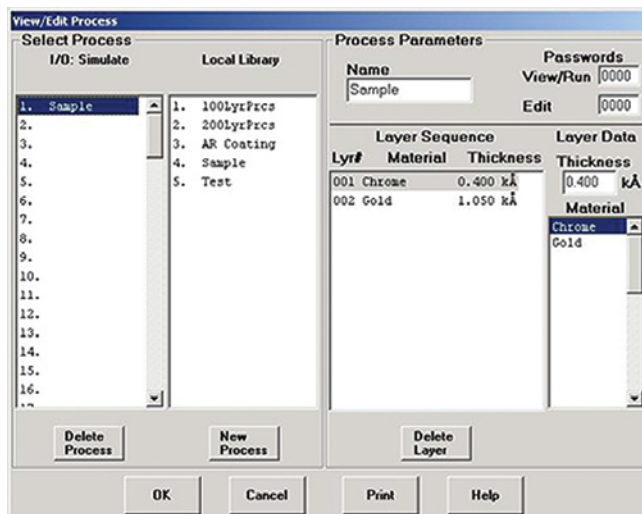
11 MB Free Hard Disk Space

Additional space is required to record run-time data. The exact amount varies with the Data Points/Minute setting

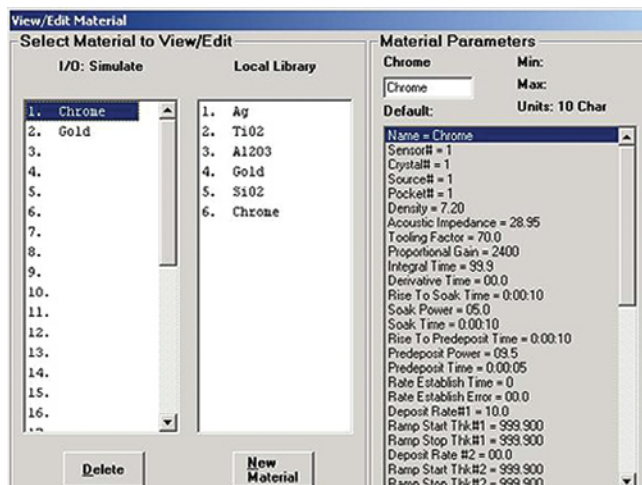
* These versions added a new auto-data logging command, which is required by the DCM-250's Monitor Process screen.



View Results



View / Edit Process



View / Edit Materials

