

TWare32™

For Windows® 95/98/NT/2000/Me/XP

**BASIC, EASY-TO-USE
GAS ANALYSIS SOFTWARE**

 **INFICON**
Instruments for Intelligent Control™

Collect and display RGA data with unmatched convenience.

Not all RGA applications require all the latest features (and the complex software screens needed to control them). TWare32™ gives you the most popular RGA functions—monitoring, leak detection, recipe-controlled operation and tuning/calibration—in a simplified system that's easier and faster to use.

Right from the start, you'll notice how well thought out TWare32 is. It's preconfigured for typical process monitoring, immediately ready to show a bar graph and trend display of commonly monitored gases such as hydrogen, water vapor, nitrogen, oxygen, argon and carbon dioxide. You can also easily customize TWare32 using the wizard-guided recipe editor.

TWARE32 FEATURES AT A GLANCE:

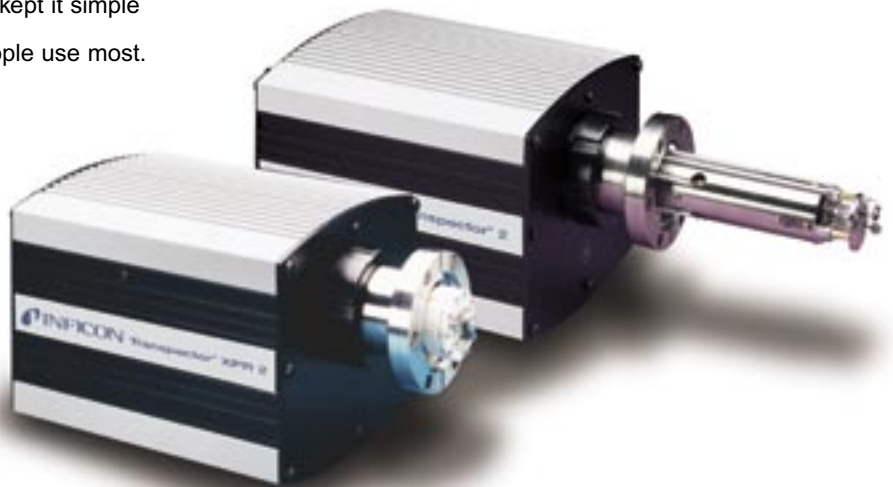
- simple design makes it easy to do basic gas analysis functions
- works with Windows 95/98/NT/2000/Me/XP
- use with all Transpector RGAs
- single sensor and multisensor versions
- TCA485 Transpector Communications Adapter plugs onto back of computer, eliminates need for internal RS485 board

TWare32 is easy and fast to use. We kept it simple by focusing on the RGA functions people use most. The intelligent user interface lets you access data with fewer keystrokes and mouse clicks. Behind this elegant simplicity, you'll find state-of-the-art software that runs on Windows® Me, 2000 and XP platforms, as well as older Windows NT, 95 and 98.

TWare32 helps you get the most out of your Transpector RGAs, including the original Transpector, XPR, XPR2, XPR3 and Transpector 2 models, as well as Preclude™ photoresist detectors, IPC400, CPM and closed ion source gas analysis systems.



If you only need to operate one Transpector, the single-sensor version of TWare32 is a cost-effective solution. With the multisensor version, you'll be able to control a network of various types of Transpectors from a single computer. You won't need to find a slot for an RS485 board either, since the TCA485 Transpector Communications Adapter plugs right onto the back of your PC using an available RS232 port.



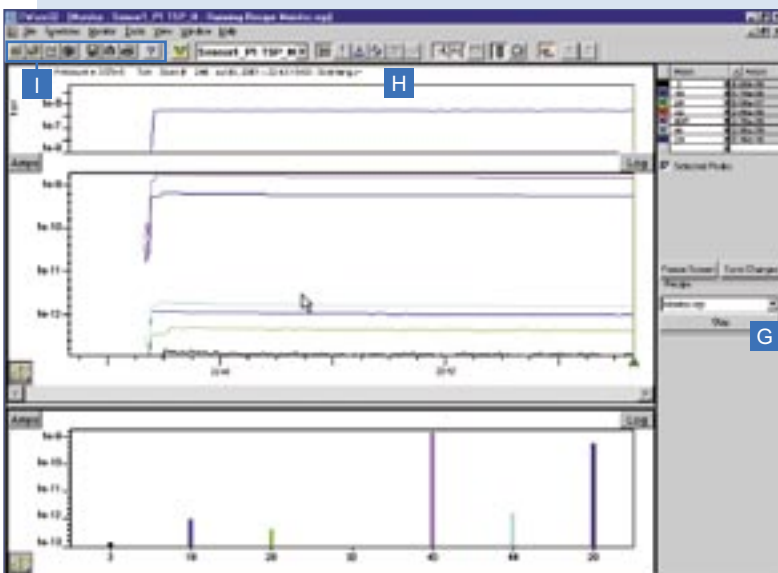
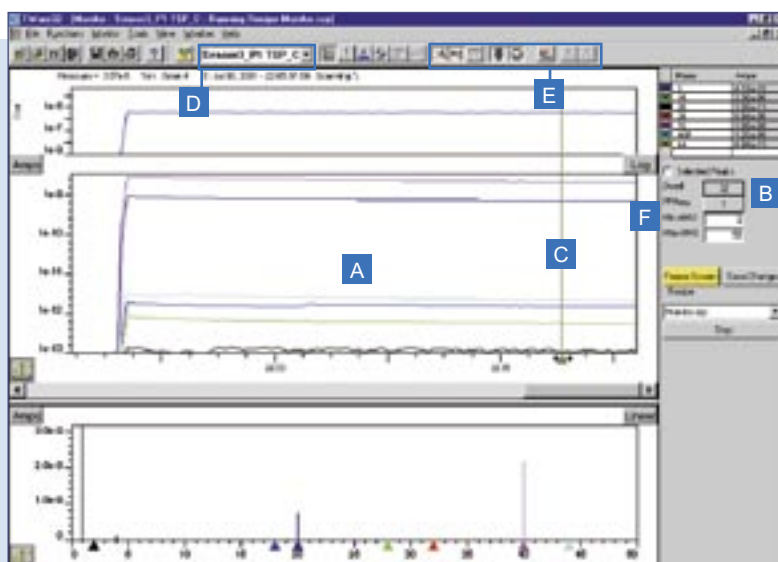
All the functions you need. None of the functions you don't.

MONITOR MODE

TWare32 can be configured to capture all data, all the time, while simultaneously displaying it in the optimum format for viewing. Displays may be analog, bar, trend, partial pressure and up to 30 selected peaks over any

mass range. The File Open function lets you scroll through all data to quickly find what you're looking for. Data can also be exported to a spreadsheet program, greatly enhancing post-process analysis.

- A** Three graphs permit simultaneous viewing of total pressure (top), user-selected masses over time (middle) and full scan capabilities (bottom). Masses and lines are color coordinated.
- B** While all data from the selected scan range is stored at all times, the display remains uncluttered since only the masses you've selected are displayed.
- C** Moving the cursor to a specific time automatically freezes the scan and displays the appropriate data.
- D** This pull-down menu makes it easy to switch between sensors.

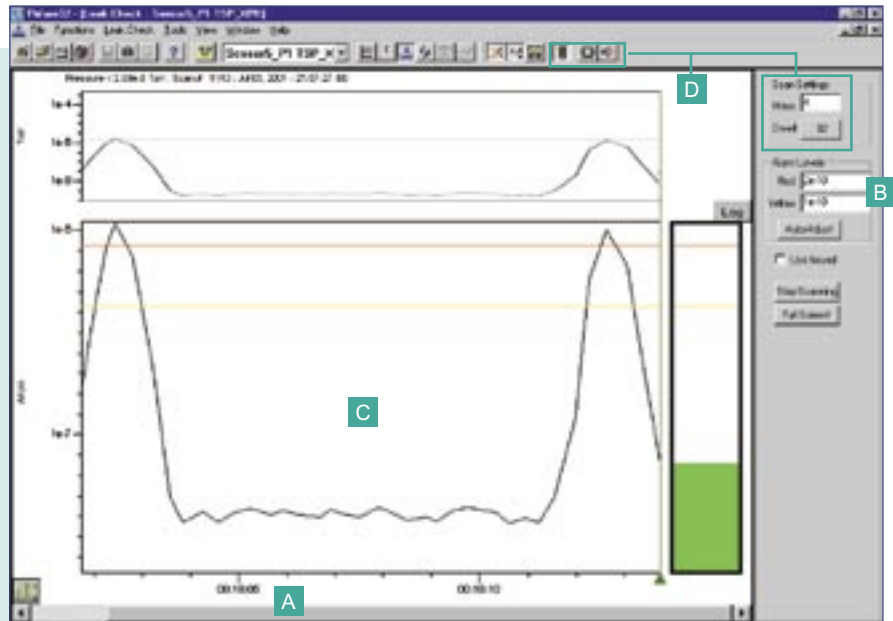


- E** Frequently used keys such as filament emission, EM, start/stop, freeze, change mode, and increment/decrement stored data files are always available.
- F** Checking the Selected Peaks box immediately changes the bottom display from full spectrum scanning to only the masses you've selected. This provides data faster.
- G** This pull-down menu makes it easy to run a recent recipe.
- H** You can quickly switch between the major modes (monitor, run, leak and tune) with these buttons or the right-hand mouse button.
- I** A standard Windows-style toolbar lets you quickly close, open, create a recipe, take a snapshot of data, print files, and get complete online help.

LEAK CHECK MODE

The full-range thermometer-type display, trend chart, and audible tone output help you pinpoint leaks quickly and easily.

- A** All modes show “real” time.
- B** Warning and alarm levels can be set automatically and modified manually.
- C** Simultaneously view time-trend, thermometer-type and total pressure displays.
- D** Leak Check features include programmable mass, scan time (dwell), start/stop, sound and full-screen display.

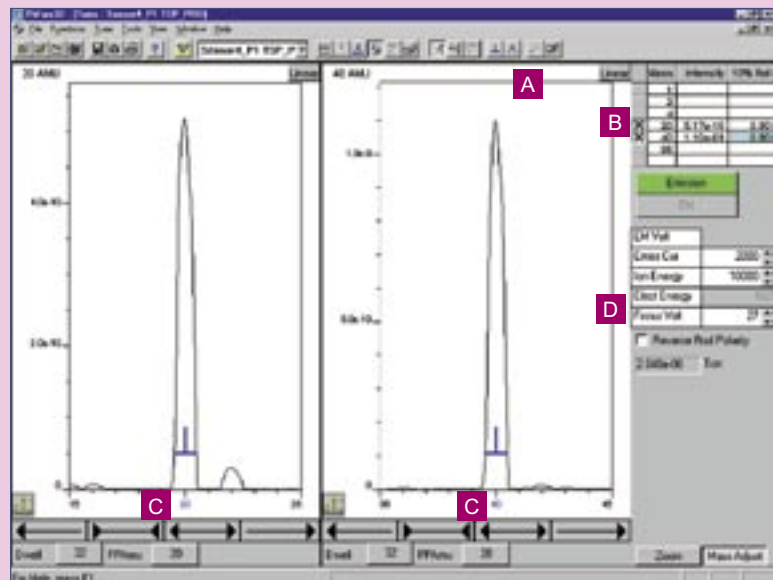


TUNE MODE

“Calibrate” automatically adjusts the multiplier voltage and sensor sensitivity to achieve a desired value, ensuring measurement consistency, reliability and

repeatability. “Tune” allows the user to adjust mass resolution or mass position.

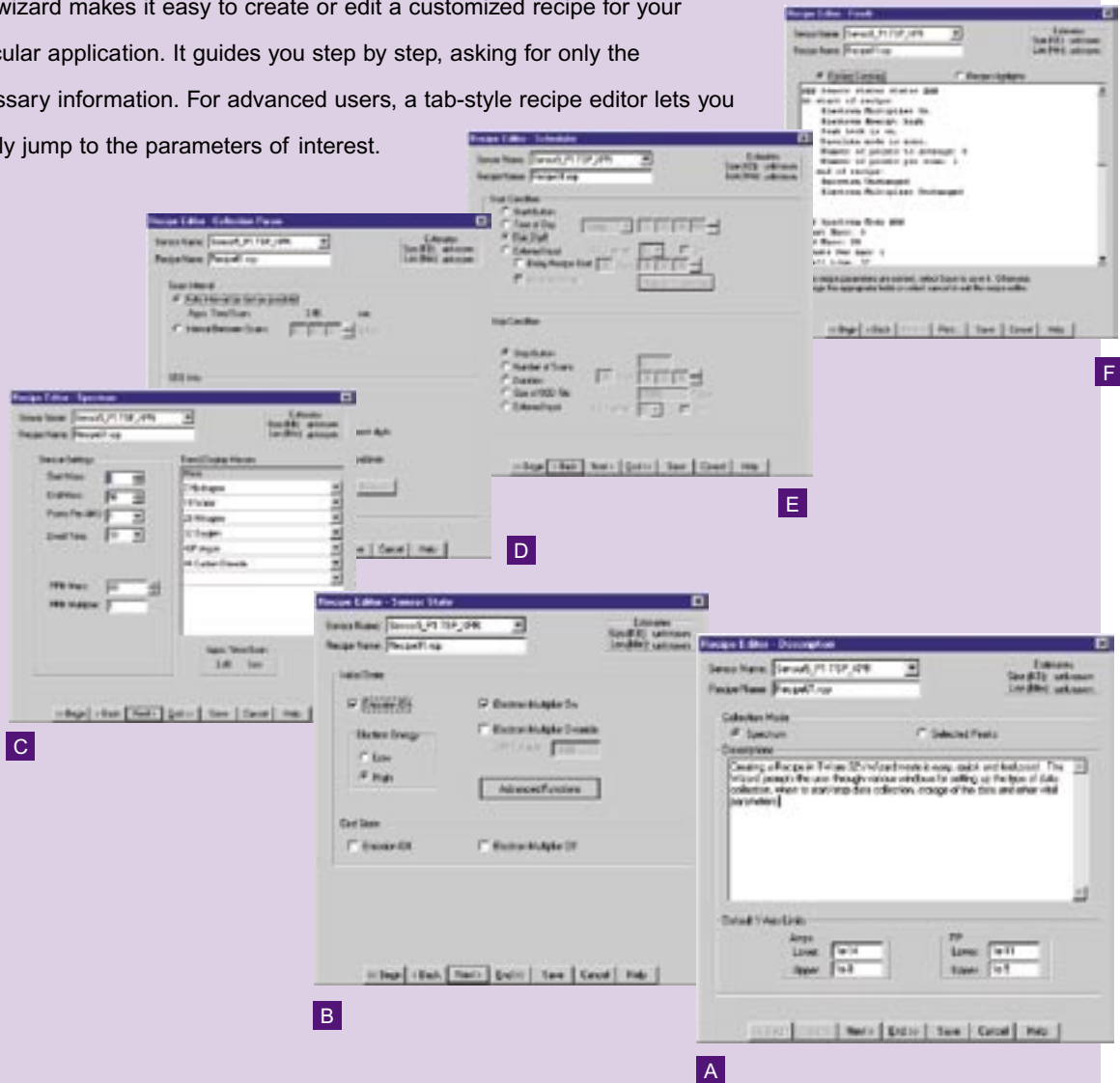
- A** These buttons make it easy to store and recall tuning parameters and display markers that aid in positioning peaks and adjusting resolutions.
- B** Tune using up to 10 masses (two shown).
- C** Mass position and resolution can be tuned automatically or adjusted manually with these buttons.
- D** Parameters for each sensor can be adjusted to optimize performance.



Easily create custom recipes.

RECIPE EDITOR

This wizard makes it easy to create or edit a customized recipe for your particular application. It guides you step by step, asking for only the necessary information. For advanced users, a tab-style recipe editor lets you quickly jump to the parameters of interest.



- A** Description Screen: Here you can name the recipe, add a description, and specify whether data should be collected for the full spectrum or selected peaks.
- B** Sensor State Screen: Select the emission and EM initial and end states.
- C** Spectrum Screen: Select scanning parameters and trend display masses. TWare32 will estimate the scan duration.
- D** Collection Parameters Screen: Select the scanning interval and the way you want the data to be saved.
- E** Scheduler Screen: Set the start and stop conditions, and number of scans.
- F** Finish Screen: View a summary of your recipe information, and save it as a recipe file. If there are any errors, the “back” button makes it easy to go back and make changes.

SPECIFICATIONS

Transpector Models Supported	All Transpector, including Transpector, Transpector 2, Transpector AGM, Transpector CIS and CIS2, Transpector XPR and XPR2, Preclude, IPC400 and CPM
Communications Interface	RS232 or RS485 via TCA485
Communications Baud Rate	RS232 — User Selectable (4800 or 9600 (default)) RS485 — 57,600
Maximum Communications Cable Length	RS232 — 30.5 meters (100 feet) RS485 — 305 meters (1000 feet)



COMPUTER SYSTEM REQUIREMENTS

	Minimum specifications for operating 1 or 2 Transpector	Minimum specifications for operating 3 or more Transpector
Processor	Pentium I	Pentium II
Processor Speed	233 MHz or greater	400 MHz or greater
RAM	64 MB or greater	256 MB or greater
Hard Disk Space for Loading TWare32	5 MB or greater	5 MB or greater
Hard Disk Space for Data Storage	500 MB or greater	1 GB or greater
Monitor (Desktop)	14" SVGA or greater	15" SVGA or greater
Monitor Resolution	800 x 600 or greater	800 x 600 or greater
Serial Port	One RS232 port for single or multi with TCA485	One RS232 port for single or multi with TCA485
Operating System	Windows: Me, 2000, XP, NT 4.0 or greater, 95, 98	Windows: Me, 2000, XP, NT 4.0 or greater, 95, 98

ORDERING INFORMATION

TWare32 — Single (Diskette)	911-339-G1
TWare32 — Multi (Diskette)	911-339-G2
TWare32 — Single (CD-ROM)	911-339-G3
TWare32 — Multi (CD-ROM)	911-339-G4
TCA485 (U.S. Version)	916-600-G2
TCA485 (German Version)	916-600-G3
TCA485 (Japanese Version)	916-600-G4
TCA485 (U.K. Version)	916-600-G5
TWare32 User Guide	074-334
TWare32 Cleanroom User Guide	074-334CR

TWare32 and Preclude are trademarks and Transpector is a registered trademark of INFICON. Windows is a registered trademark of Microsoft.



GLOBAL HEADQUARTERS:

Two Technology Place, East Syracuse, NY 13057 USA
Tel: +1.315.434.1100 Fax: +1.315.437.3803 E-mail: reachus@inficon.com

UNITED STATES FRANCE GERMANY LIECHTENSTEIN SWITZERLAND UNITED KINGDOM CHINA JAPAN KOREA SINGAPORE TAIWAN

Visit our website for contact information and other sales offices worldwide. www.inficon.com
Due to our continuing program of product improvements, specifications are subject to change without notice.

aibba27a1-a ©2004 INFICON