

VVH010-A/X

Manually Actuated Venting Valve

ADVANTAGES

- Simple opening and closing of the valve by loosening or tightening the screw cap



SELECTION DATA

| | | | |
|-------------------|------------|-------------------|------------------------------|
| Vacuum connection | | DN 10 ISO-KF | DN 10 ISO-KF |
| Housing | AISI / DIN | aluminum / 3.0615 | stainless steel 303 / 1.4305 |

ORDERING INFORMATION

| | | |
|----------|-----------------|-----------------|
| Type | VVH010-A | VVH010-X |
| Part No. | 250-840 | 250-841 |

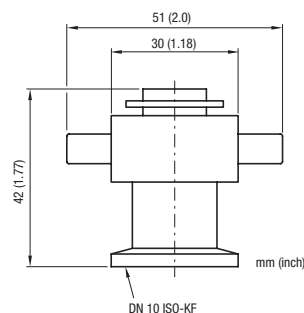
SPECIFICATIONS

| | | | |
|----------------------------|----------|------------------------|------------------------------|
| Tightness | mbar l/s | 1×10^{-9} | 1×10^{-9} |
| Pressure absolute min./max | mbar/bar | $1 \times 10^{-8} / 5$ | $1 \times 10^{-8} / 5$ |
| Valve plate | | aluminum | stainless steel 304 / 1.4301 |
| Screw cap | | brass nickel-plated | brass nickel-plated |
| Seal | | FPM | FPM |
| Weight | kg | 0.1 | 0.15 |

SPARE PARTS

| | | |
|--------|----------------------|----------------------|
| O-ring | B 4070 207 PV | B 4070 207 PV |
|--------|----------------------|----------------------|

DIMENSIONS





GLOBAL HEADQUARTERS:

Two Technology Place, East Syracuse, NY 13057 USA
Tel: +1.315.434.1100 Fax: +1.315.437.3803 E-mail: reachus@inficon.com

UNITED STATES FRANCE GERMANY LIECHTENSTEIN SWITZERLAND UNITED KINGDOM CHINA JAPAN KOREA SINGAPORE TAIWAN

Visit our website for contact information and other sales offices worldwide. www.inficon.com
Due to our continuing program of product improvements, specifications are subject to change without notice.
siba31e1 (2004-05) ©2003 INFICON Inc.