

## DN 40

### Angle and Inline Valves ( VAH, VIH, VAP, VIP )

#### MANUALLY ACTUATED

- Bellows feedthrough
- Quick opening with 130° turn
- Soft start in four steps

#### PNEUMATICALLY ACTUATED

- Bellows feedthrough
- Visual indication of the open and closed position
- Electrical position indicator for open and closed position
- For system manufacturers - without pilot valve without position indicator
- Extremely long service life



#### SELECTION DATA

Angle valve		DN 40 ISO-KF	DN 40 ISO-KF	—
Inline valve		—	—	DN 40 ISO-KF
Housing material	AISI/DIN	aluminum -/3.2373	stainless steel 304/1.4301	stainless steel 304/1.4301

#### ORDERING INFORMATION MANUALLY ACTUATED

Type		VAH040-A	VAH040-X	VIH040-X
Angle valve	Part No.	250-280	250-285	—
Inline valve	Part No.	—	—	250-385

#### SPARE PARTS

Seal set		215-125	215-125	215-125
Bellows set for manually actuated valves		215-142	215-142	215-142

#### SPECIFICATIONS MANUALLY ACTUATED

Service life	Mio cycles	10	10	10
Conductance for molecular flow	l/s	40	40	20
Tightness	mbar l/s	1 x 10 <sup>-9</sup>	1 x 10 <sup>-9</sup>	1 x 10 <sup>-9</sup>
Pressure, absolute, min. / max.	mbar / bar	10 <sup>-8</sup> / 1.5	10 <sup>-8</sup> / 1.5	10 <sup>-8</sup> / 6
Pressure resistance	bar (abs.)	2.5	2.5	2.5
Differential pressure in closing / opening direction	bar	2 / 1.5	2 / 1.5	2 / 1.5
Opens to a pressure difference of	bar	4	4	4
Ambient temperature	°C	0 – 50	0 – 50	0 – 50
Mounting orientation		any	any	any
Seals		FPM	FPM	FPM
Weight	kg	0.48	0.85	1.4

## SELECTION DATA

Angle valve		DN 40 ISO-KF	DN 40 ISO-KF	—
Inline valve		—	—	DN 40 ISO-KF
Housing material	AISI/DIN	aluminum -/3.2373	stainless steel 304/1.4301	stainless steel 304/1.4301

## ORDERING INFORMATION PNEUMATICALLY ACTUATED

Type	VAP040-A	VAP040-X	VIP040-X
Angle valve w/o pilot valve, w/o position indicator	<b>250-292</b>	<b>250-297</b>	—
Angle valve w/o pilot valve, with position indicator	<b>250-244</b>	<b>250-254</b>	—
Inline valve w/o pilot valve, with position indicator	—	—	<b>250-354</b>
Valve with pilot valve, with position indicator			
24 V DC	Part No. <b>250-240</b>	<b>250-250</b>	<b>250-350</b>
24 V AC	Part No. <b>250-241</b>	<b>250-251</b>	<b>250-351</b>
100 – 115 V AC	Part No. <b>250-242</b>	<b>250-252</b>	<b>250-352</b>
200 – 240 V AC	Part No. <b>250-243</b>	<b>250-253</b>	<b>250-353</b>
24 VDC, normally open	Part No. <b>250-246</b>	<b>250-256</b>	<b>250-356</b>

## SPARE PARTS

Seal set	<b>215-125</b>	<b>215-125</b>	<b>215-125</b>
Bellows set for pneumatically actuated valves	<b>215-127</b>	<b>215-127</b>	<b>215-127</b>

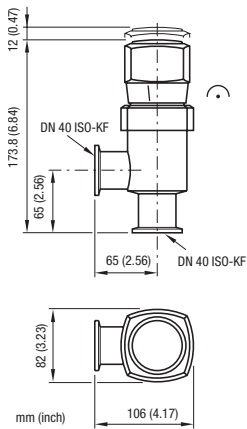
## SPECIFICATIONS PNEUMATICALLY ACTUATED

Service life	Mio cycles	10	10	10
Conductance for molecular flow	l/s	40	40	20
Tightness	mbar l/s	1 x 10 <sup>-9</sup>	1 x 10 <sup>-9</sup>	1 x 10 <sup>-9</sup>
Pressure, absolut, min. / max.	mbar / bar	10 <sup>-8</sup> / 1.5	10 <sup>-8</sup> / 1.5	10 <sup>-8</sup> / 1.5
Pressure resistance	bar (abs.)	2.5	2.5	2.5
Differential pressure in closing / opening direction	bar	2 / 1.5	2 / 1.5	2 / 1.5
Opens to a pressure difference of	bar	2	2	2
Ambient temperature	°C	0 ... 50	0 ... 50	0 ... 50
Switching frequency	1/min	75	75	75
Closing time	ms	500	500	500
Opening time	ms	250	250	250
Electrical position indicator load capacity	VAC / A VDC / A	250 / 0.125 50 / 0.25	250 / 0.125 50 / 0.25	250 / 0.125 50 / 0.25
Compressed air, overpressure	bar	3 – 7 <sup>1)</sup>	3 – 7 <sup>1)</sup>	3 – 7 <sup>1)</sup>
Air cylinder volume	cm <sup>3</sup>	26.2	26.2	26.2
Mounting orientation		any	any	any
Seals		FPM	FPM	FPM
Weight	kg	0.9	1.6	1.5

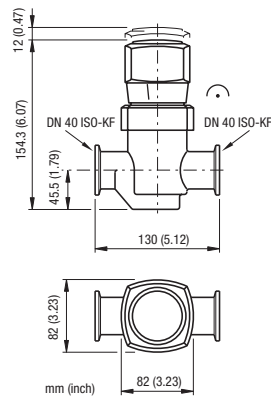
1) No-type 2-6 bar

## DIMENSIONS MANUALLY ACTUATED

VAH040-A / VAH040-X

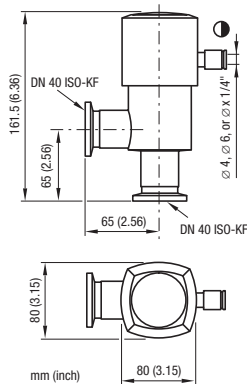


VIH040-X



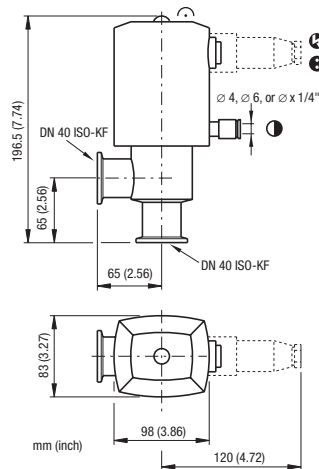
## DIMENSIONS PNEUMATICALLY ACTUATED

VAP040-A / VAP040-X



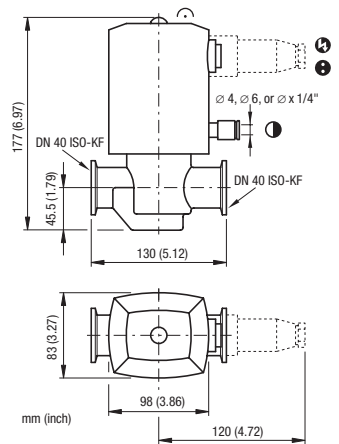
Angle valve w/o pilot valve,  
without position indicator

VAP040-A / VAP040-X



Angle valve with and without pilot valve,  
with position indicator

VIP040-X



Inline valve with and without pilot valve,  
with position indicator



### GLOBAL HEADQUARTERS:

Two Technology Place, East Syracuse, NY 13057 USA  
Tel: +1.315.434.1100 Fax: +1.315.437.3803 E-mail: reachus@inficon.com

UNITED STATES FRANCE GERMANY LIECHTENSTEIN SWITZERLAND UNITED KINGDOM CHINA JAPAN KOREA SINGAPORE TAIWAN

Visit our website for contact information and other sales offices worldwide. [www.inficon.com](http://www.inficon.com)  
Due to our continuing program of product improvements, specifications are subject to change without notice.  
siba14e1 (2004-05) ©2003 INFICON Inc.