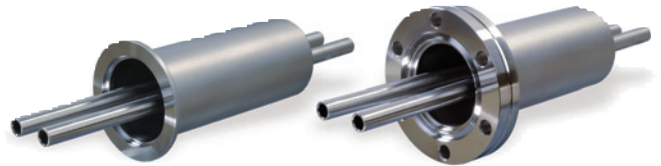


DN 40

Liquid Feedthroughs ISO-KF / CF-F

PROPERTIES

- ◆ For H₂O and LN₂
- ◆ Thermally insulated
- ◆ Especially suited for very hot and very cold applications



SELECTION DATA

		DN 40 ISO-KF	DN 40 CF-F
Vacuum connection		DN 40 ISO-KF	DN 40 CF-F
Feedthrough/seal		welded	welded
Tube dimensions	mm	Ø 8 x 1	Ø 8 x 1
Number of tubes		2	2

ORDERING INFORMATION

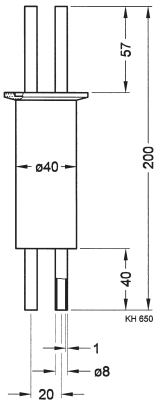
Part No.	214-101	214-102

SPECIFICATIONS

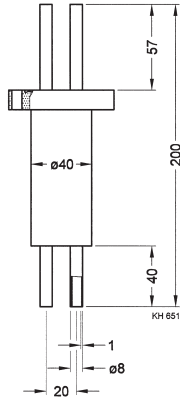
		1 x 10 ⁻⁹	1 x 10 ⁻¹⁰
Tightness	mbar l/s	1 x 10 ⁻⁹	1 x 10 ⁻¹⁰
Pressure		10 ⁻⁸ mbar ... 10 bar	10 ⁻⁹ mbar ... 10 bar
Temperature range	°C	-200 ... +150	-200 ... +400
Material		stainless steel 304/1.4301	stainless steel 304/1.4301
Weight	kg	0.3	0.4

DIMENSIONS

214-101



214-102



GLOBAL HEADQUARTERS:

Two Technology Place, East Syracuse, NY 13057 USA
Tel: +1.315.434.1100 Fax: +1.315.437.3803 E-mail: reachus@inficon.com

UNITED STATES FRANCE GERMANY LIECHTENSTEIN SWITZERLAND UNITED KINGDOM CHINA JAPAN KOREA SINGAPORE TAIWAN

Visit our website for contact information and other sales offices worldwide. www.inficon.com
Due to our continuing program of product improvements, specifications are subject to change without notice.
riba16e1 (2004-06) ©2003 INFICON Inc.