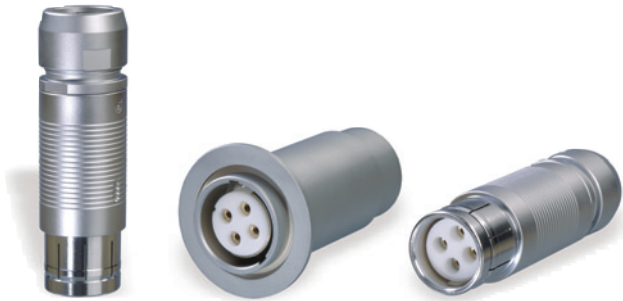


DN 40 ISO-KF

Electrical Feedthroughs



SELECTION DATA

		DN 40 ISO - KF	DN 40 ISO - KF	DN 40 ISO - KF	DN 40 ISO - KF
Vacuum connection					
Number of feedthroughs		7	7	4	1
Voltage per pole	V	380	380	800	6000
Current per pole	A	16	16	16	25

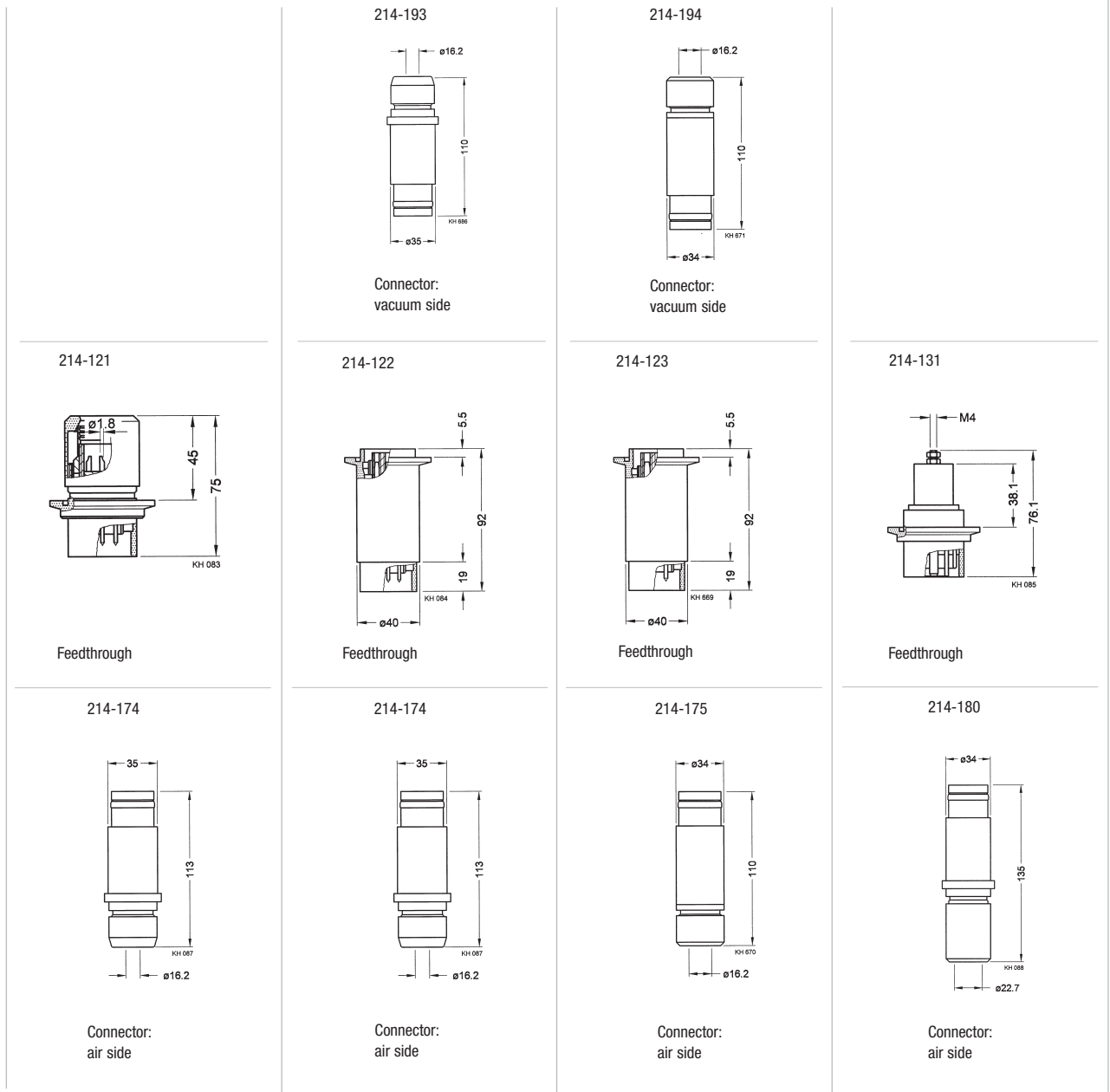
ORDERING INFORMATION

Feedthrough	214-121	214-122	214-123	214-131
Connector: vacuum side	–	214-193	214-194	–
Connector: atmospheric	214-174	214-174	214-175	214-180

SPECIFICATIONS

Connection		connector connector		connector connector	bolted connection connector
Vacuum side		solder connection connector	connector connector	connector connector	bolted connection connector
Atmospheric side					
Diameter of connecting wire	mm	1.8	1.8	2.5	5
Test voltage	kV/HZ	–	–	–	15/50
Pressure (absolute)		1 x 10 ⁻⁸ mbar ... 2.5bar			
Bakeout temperature (feedthrough and connector)	°C	130			
Housing		stainless steel 303/1.4305			
Insulator		PTFE/Araldite			
Seal		FPM			
Contact (feedthrough and connector)		gold-plated bronze	gold-plated bronze	gold-plated bronze	nickel-plated brass

DIMENSIONS



GLOBAL HEADQUARTERS:

Two Technology Place, East Syracuse, NY 13057 USA
Tel: +1.315.434.1100 Fax: +1.315.437.3803 E-mail: reachus@inficon.com

UNITED STATES FRANCE GERMANY LIECHTENSTEIN SWITZERLAND UNITED KINGDOM CHINA JAPAN KOREA SINGAPORE TAIWAN

Visit our website for contact information and other sales offices worldwide. www.inficon.com
Due to our continuing program of product improvements, specifications are subject to change without notice.
riba10e1 (2004-06) ©2003 INFICON Inc.