

# FRU DN 16 – DN 40

## Rotary Feedthroughs CF

### PROPERTIES

- ◆ Bellow sealed
- ◆ All-metal version
- ◆ For very demanding vacuum requirements



### SELECTION DATA

	DN 16 CF-F	DN 40 CF-F	DN 40 CF-F
Vacuum connection	DN 16 CF-F	DN 40 CF-F	DN 40 CF-F
Feedthrough / seal	bellow	bellow	bellow
Shaft connection	4 mm	8 mm	12 mm

### ORDERING INFORMATION

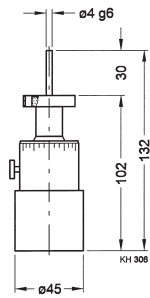
Type	FRU016-H	FRU040-N	FRU040-L
Part No.	214-310	214-312	214-314

### SPECIFICATIONS

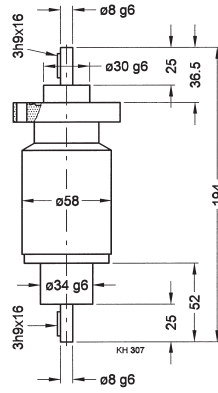
Transferable torque				
Dynamic	Nm	0.4	4	10
Dynamic, at 300 °C	Nm	0.2	2	2
Static	Nm	0.2	3	5
Rotational speed	rpm	200	1000	500
At max. torque	rpm		500	300
Shaft load vacuum sided				
Radial force	N	10	60	100
Axial force	N	5	20	30
Service life	Revolutions	1 000 000	2 000 000	1 000 000
Scale division	Degree	10	–	–
Tightness	mbar l/s	5 x 10 <sup>-11</sup>		
Pressure (absolute)		1 x 10 <sup>-10</sup> mbar ... 2 bar		
Operating temperature	°C	300		
Bakeout temperature	°C	300		
Materials exposed to process media		304L/1.4306 304/1.4301 –/2.4360	304L/1.4306 304/1.4301 –/2.4360	304L/1.4306 304/1.4301 303/1.4305
Weight	kg	0.3	1.5	3.0

## DIMENSIONS

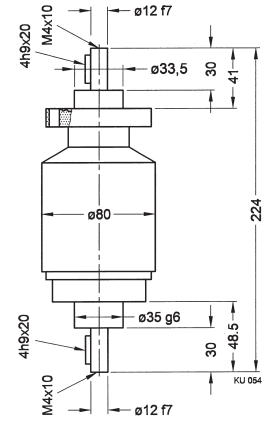
FRU016-H



FRU040-N



FRU040-L



**GLOBAL HEADQUARTERS:**

Two Technology Place, East Syracuse, NY 13057 USA  
 Tel: +1.315.434.1100 Fax: +1.315.437.3803 E-mail: reachus@inficon.com

UNITED STATES FRANCE GERMANY LIECHTENSTEIN SWITZERLAND UNITED KINGDOM CHINA JAPAN KOREA SINGAPORE TAIWAN

Visit our website for contact information and other sales offices worldwide. [www.inficon.com](http://www.inficon.com)  
 Due to our continuing program of product improvements, specifications are subject to change without notice.  
 riba02e1 (2004-06) ©2003 INFICON Inc.