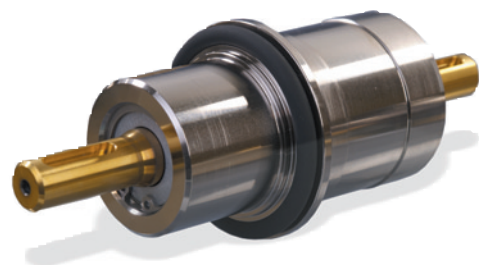


FRH DN 16 – DN 63

Rotary Feedthroughs ISO-KF / ISO-K

PROPERTIES

- ◆ For transmitting high torque
- ◆ With FPM shaft seal and ball bearings



SELECTION DATA

Vacuum connection	DN 16 ISO-KF	DN 25 ISO-KF	DN 40 ISO-KF	DN 63 ISO-K
Feedthrough/seal	FPM	FPM	FPM	FPM
Shaft measure	mm Ø5	Ø8	Ø12	Ø20

ORDERING INFORMATION

Type	FRH016-H	FRH025-H	FRH040-H	FRH063-H
Part No.	214-300	214-302	214-304	214-306 ²⁾

SPECIFICATIONS

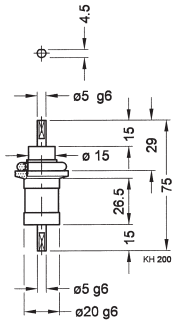
Transferable torque	Nm	1.5	6	25	100
Rotational speed ¹⁾	rpm	1500	1000	750	500
Idling torque under vacuum	Ncm	≤ 3	≤ 4	≤ 5	≤ 10
Starting torque under vacuum	Ncm	≤ 6	≤ 8	≤ 10	≤ 20
Shaft load vacuum sided					
Radial force	N	60	150	250	500
Axial force	N	30	50	60	100
Service life	Revolutions	20 000 000	20 000 000	20 000 000	10 000 000
Tightness, static	mbar l/s	1 x 10 ⁻⁹	1 x 10 ⁻⁹	1 x 10 ⁻⁹	1 x 10 ⁻⁹
Pressure (absolute)		1 x 10 ⁻⁹ mbar ... 1 bar			
Operating temperature	°C	50			
Bakeout temperature	°C	110			
Materials exposed to process media		stainless steel 420/1.4021 aluminum 6063/3.2315 elastomer FPM			
Weight	kg	0.1	0.2	0.6	2

¹⁾ When a reduced service life is acceptable, the rotational can be increased by up to a factor of two

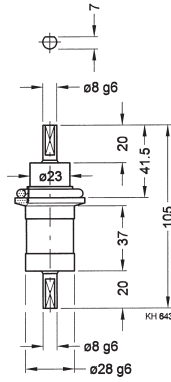
²⁾ Centering ring / CR/aluminum Part No. 212-251 / FPM / stainless steel Part No. 212-281 not included in delivery

DIMENSIONS

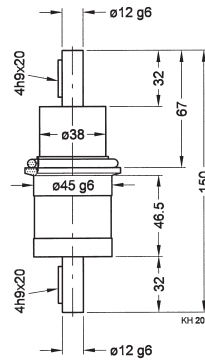
FRH016-H



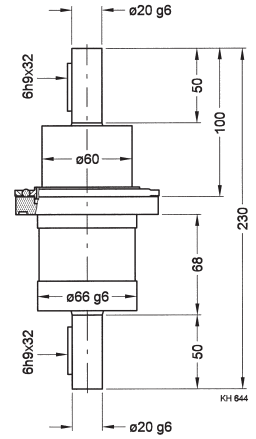
FRH025-H



FRH040-H



FRH063-H



GLOBAL HEADQUARTERS:

Two Technology Place, East Syracuse, NY 13057 USA
 Tel: +1.315.434.1100 Fax: +1.315.437.3803 E-mail: reachus@inficon.com

UNITED STATES FRANCE GERMANY LIECHTENSTEIN SWITZERLAND UNITED KINGDOM CHINA JAPAN KOREA SINGAPORE TAIWAN

Visit our website for contact information and other sales offices worldwide. www.inficon.com
 Due to our continuing program of product improvements, specifications are subject to change without notice.
 riba01e1 (2004-06) ©2003 INFICON Inc.