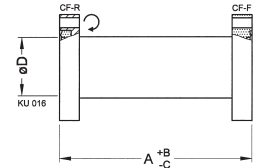


PIPE FITTINGS

UHV CF Components

INTERMEDIATE PIECE

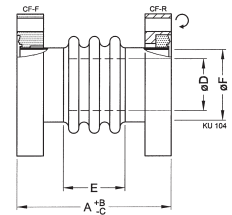
| | DN ... CF | Part No. | A | B | C | D |
|----------------------------|-----------|----------------|-----|-----|-----|-----|
| Stainless steel 304/1.4301 | 16 | 213-201 | 76 | 0.5 | 0.5 | 16 |
| | 40 | 213-202 | 126 | 1 | 1 | 37 |
| | 63 | 213-203 | 210 | 1 | 1 | 104 |
| | 100 | 213-204 | 270 | 1 | 1 | 104 |
| | 160 | 213-205 | 334 | 1.5 | 1.5 | 155 |



INTERMEDIATE PIECE, INSULATED

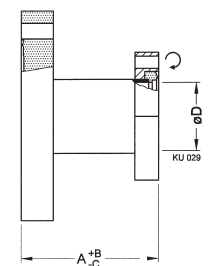
| | DN ... CF | Part No. | A | B | C | D | E | F | G |
|---|-----------|----------------|----|---|---|----|----|------|----|
| Flanges: Stainless steel 304/1.4301 | 40 | 213-212 | 70 | 1 | 1 | 25 | 30 | 34.5 | 44 |
| Insulator: Ceramic Al ₂ O ₃ | 63 | 213-213 | 90 | 1 | 1 | 53 | 45 | 66 | 65 |

Transition insulator/flange: FeNi
 Bakeout temperature: 350 °C
 G = Surface leakage 20 kV at 10⁻⁴ mbar



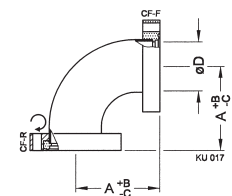
REDUCER CF/CF

| | DN ... CF | Part No. | A | B | C | D |
|----------------------------|-----------|----------------|-----|-----|-----|-----|
| Stainless steel 304/1.4301 | 40/16 | 213-221 | 45 | 1 | 1 | 16 |
| | 63/40 | 213-223 | 75 | 1 | 1 | 37 |
| | 100/40 | 213-225 | 75 | 1 | 1 | 37 |
| | 100/63 | 213-226 | 95 | 1 | 1 | 66 |
| | 160/100 | 213-230 | 105 | 1.5 | 1.5 | 104 |

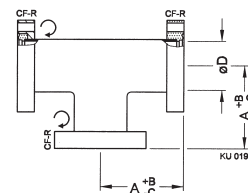


ELBOW 90°

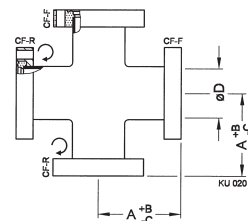
| | DN ... CF | Part No. | A | B | C | D |
|----------------------------|-----------|----------------|-----|-----|-----|-----|
| Stainless steel 304/1.4301 | 16 | 213-301 | 38 | 0.5 | 0.5 | 15 |
| | 40 | 213-302 | 63 | 0.5 | 0.5 | 38 |
| | 63 | 213-303 | 105 | 1 | 1 | 66 |
| | 100 | 213-304 | 135 | 1 | 1 | 100 |
| | 160 | 213-305 | 167 | 1.5 | 1.5 | 150 |



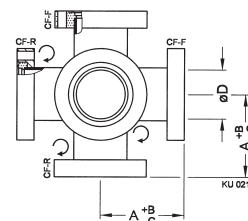
| TEE | DN ... CF | Part No. | A | B | C | D |
|----------------------------|-----------|----------------|-----|-----|-----|-----|
| Stainless steel 304/1.4301 | 16 | 213-311 | 38 | 0.5 | 0.5 | 15 |
| | 40 | 213-312 | 63 | 0.5 | 0.5 | 38 |
| | 63 | 213-313 | 105 | 1 | 1 | 66 |
| | 100 | 213-314 | 135 | 1 | 1 | 100 |
| | 160 | 213-315 | 167 | 1.5 | 1.5 | 150 |



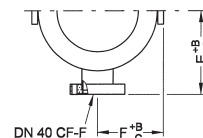
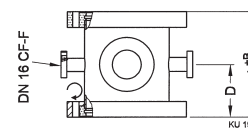
| CROSS | DN ... CF | Part No. | A | B | C | D |
|----------------------------|-----------|----------------|-----|-----|-----|-----|
| Stainless steel 304/1.4301 | 16 | 213-321 | 38 | 0.5 | 0.5 | 15 |
| | 40 | 213-322 | 63 | 0.5 | 0.5 | 38 |
| | 63 | 213-323 | 105 | 1 | 1 | 66 |
| | 100 | 213-324 | 135 | 1 | 1 | 100 |
| | 160 | 213-325 | 167 | 1.5 | 1.5 | 150 |



| DOUBLE CROSS-PIECE | DN ... CF | Part No. | A | B | C | D |
|--|-----------|----------------|-----|-----|-----|-----|
| Stainless steel 304/1.4301 3 rotatable flanges 3 fix flanges | 40 | 213-332 | 63 | 0.5 | 0.5 | 38 |
| | 63 | 213-333 | 105 | 1 | 1 | 66 |
| | 100 | 213-334 | 135 | 1 | 1 | 100 |
| | 160 | 213-335 | 167 | 1.5 | 1.5 | 150 |



| REDUCING CROSS | DN ... CF | Part No. | A | B | C | D | E | F |
|--|-----------|----------------|-----|---|---|------|-----|----|
| Stainless steel 304/1.4301 2 x DN 16 CF-F 2 x DN 40 CF-F | 100 | 213-342 | 135 | 1 | 1 | 67.5 | 106 | 84 |



GLOBAL HEADQUARTERS:

Two Technology Place, East Syracuse, NY 13057 USA
Tel: +1.315.434.1100 Fax: +1.315.437.3803 E-mail: reachus@inficon.com

UNITED STATES FRANCE GERMANY LIECHTENSTEIN SWITZERLAND UNITED KINGDOM CHINA JAPAN KOREA SINGAPORE TAIWAN

Visit our website for contact information and other sales offices worldwide. www.inficon.com
Due to our continuing program of product improvements, specifications are subject to change without notice.
qiba19e1 (2004-05) ©2003 INFICON Inc.