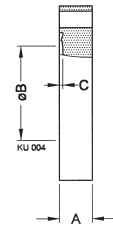


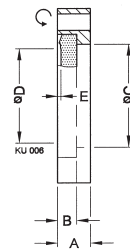
FLANGES

UHV CF Components

BLANK FLANGE	DN ... CF-F	Part No.	A	B	C
Stainless steel 304/1.4301	16	213-001	7.5	14	1.4
	40	213-002	13	38	1.4
	63	213-003	17.5	66	1.4
	100	213-004	20	104	1.4
	160	213-005	22	155	1.4
	200	213-006	24.5	205	1.4
	250	213-007	2405	256	1.4
Stainless steel 316L/1.4435	300	213-008	28.5	306	1.4
	350	213-009	28.5	356	1.4
Stainless steel 316LN/1.4429	16	213-101	7.5	14	1.4
	40	213-102	13	38	1.4
	63	213-103	17.5	66	1.4
	100	213-104	20	104	1.4
	160	213-105	22	155	1.4
	200	213-106	24.5	205	1.4
	250	213-107	24.5	256	1.4

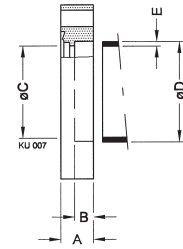


BLANK FLANGE, ROTATABLE	DN ... CF-R	Part No.	A	B	C	D	E
Stainless steel 304/1.4301	16	213-011	7.5	5.8	18.6	14	1.4
	40	213-012	13	7.6	41	38	1.4
	63	213-013	17.5	12.6	71	66	1.4
	100	213-014	20	14.3	109	104	1.4
	160	213-015	22	15.8	160	155	1.4
	200	213-016	24.5	17.1	206	205	1.4
	250	213-017	24.5	18	257	256	1.4
Stainless steel 316LN/1.4429	16	213-111	7.5	5.8	18.6	14	1.4
	40	213-112	13	7.6	41	38	1.4
	63	213-113	17.5	12.6	71	66	1.4
	100	213-114	20	14.3	109	104	1.4
	160	213-115	22	15.8	160	155	1.4
	200	213-116	24.5	17.1	206	205	1.4
	250	213-117	24.5	18	257	256	1.4



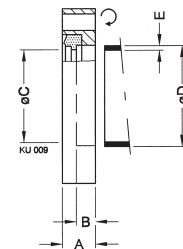
WELDING FLANGE

	DN ... CF-F	Part No.	A	B	C	D	E
Stainless steel 304/1.4301	16	213-021	7.5	3.3	17.2	18	1
	40	213-022	13	7.5	39.5	40	1.5
	63	213-023	17.5	8	66	70	2
	100	213-024	20	9	104	108	2
	160	213-025	22	10	155	159	2
	200	213-026	24.5	12	205	205	2.5
	250	213-027	24.5	12	256	256	3
Stainless steel 316L/1.4435	300	213-028	28.5	15.8	306	306	3
	350	213-029	28.5	15.8	356	356	3
Stainless steel 316LN/1.4429	16	213-121	7.5	3.3	17.2	18	1
	40	213-122	13	7.5	39.5	40	1.5
	63	213-123	17.5	8	66	70	2
	100	213-124	20	9	104	108	2
	160	213-125	22	10	155	159	2
	200	213-126	24.5	12	205	205	2.5
	250	213-127	24.5	12	256	256	3



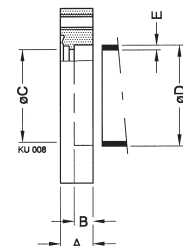
WELDING FLANGE, ROTATABLE

	DN ... CF-R	Part No.	A	B	C	D	E
Stainless steel 304/1.4301	16	213-041	7.5	3.3	17.2	18	1
	40	213-042	13	7.5	39.5	40	1.5
	63	213-043	17.5	8	66	70	2
	100	213-044	20	9	104	108	2
	160	213-045	22	10	155	159	2
	200	213-046	24.5	12	205	205	2.5
	250	213-047	24.5	12	256	256	3
Stainless steel 316LN/1.4429	16	213-141	7.5	3.3	17.2	18	1
	40	213-142	13	7.5	39.5	40	1.5
	63	213-143	17.5	8	66	70	2
	100	213-144	20	9	104	108	2
	160	213-145	22	10	155	159	2
	200	213-146	24.5	12	205	205	2.5
	250	213-147	24.5	12	256	256	3



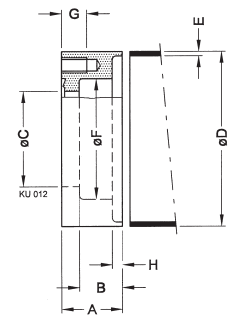
WELDING FLANGE WITH TAPPED HOLES

	DN ... CF-F	Part No.	A	B	C	D	E	
Stainless steel 304/1.4301	16	213-031	7.5	3.3	17.2	18	1	6xM4
	40	213-032	13	7.5	39.5	40	1.5	6xM6
	63	213-033	17.5	8	66	70	2	8xM8
	100	213-034	20	9	104	108	2	16x M8



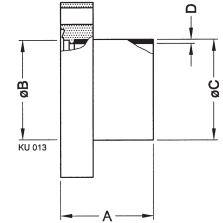
WELDING FLANGE FOR GAUGES

	DN ... CF-F	Part No.	A	B	C	D	E	F	G	F
Stainless steel 304/1.4301	40	213-092	24	17	38	69.5	1.75	48	10	4



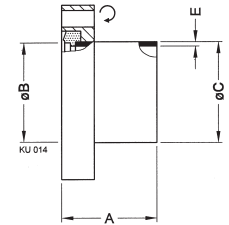
FLANGE WITH TUBE

	DN ... CF-F	Part No.	A	B	C	D
Stainless steel 304/1.4301	16	213-051	38	17.2	18	1
	40	213-052	63	39.5	40	1.6
	63	213-053	105	66	70	2
	100	213-054	135	104	108	2
	160	213-055	167	155	159	2



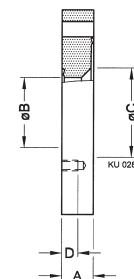
FLANGE WITH TUBE, ROTATABLE

	DN ... CF-R	Part No.	A	B	C	D
Stainless steel 304/1.4301	16	213-061	38	17.2	18	1
	40	213-062	63	39.5	40	1.6
	63	213-063	105	66	70	2
	100	213-064	135	104	108	2
	160	213-065	167	155	159	2



REDUCING FLANGE CF-F/CF-F

	DN ... CF-F	Part No.	A	B	C	D	
Stainless steel 304/1.4301	40/16	213-071	13	16	22	5.5	6xM4
	63/40	213-073	17.5	39	50	9	6xM6
	100/40	213-075	20	39	55	9	6xM6
	100/63	213-076	20	66	85	11	8xM8
	160/40	213-078	22	39	60	9	6xM6
	160/100	213-080	22	104	120	11	16xM8
Stainless steel 316LN/1.4429	40/16	213-171	13	16	22	5.5	6xM4
	63/40	213-173	17.5	39	50	9	6xM6
	100/40	213-175	20	39	55	9	6xM6
	100/63	213-176	20	66	85	11	8xM8
	160/40	213-178	22	39	60	9	6xM6
	160/100	213-180	22	104	120	11	16xM8



GLOBAL HEADQUARTERS:

Two Technology Place, East Syracuse, NY 13057 USA
 Tel: +1.315.434.1100 Fax: +1.315.437.3803 E-mail: reachus@inficon.com

UNITED STATES FRANCE GERMANY LIECHTENSTEIN SWITZERLAND UNITED KINGDOM CHINA JAPAN KOREA SINGAPORE TAIWAN

Visit our website for contact information and other sales offices worldwide. www.inficon.com
 Due to our continuing program of product improvements, specifications are subject to change without notice.
 qiba18e1-a (2005-04) ©2005 INFICON Inc.