

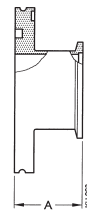
# TRANSITION PIECES

## ISO-K Clamp Flange Components

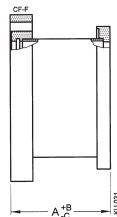
ADAPTOR FLANGE	ISO-K / ISO-F	Part No.	A
Stainless steel 304/-	160/63	<b>212-152</b>	22
	160/100	<b>212-153</b>	25
	200/100	<b>212-155</b>	20
	200/160	<b>212-156</b>	25
	250/160	<b>212-159</b>	22



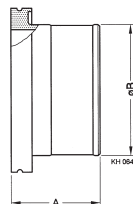
ADAPTOR	ISO-K / ISO-KF	Part No.	A
Aluminum 6082/-	63/40	<b>212-171</b>	40
	63/50	<b>212-172</b>	45
Stainless steel 303/-	63/25	<b>212-176</b>	50
	63/40	<b>212-173</b>	40
	63/50	<b>212-174</b>	45
	100/40	<b>212-175</b>	40



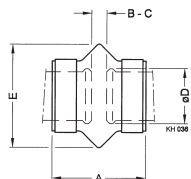
ADAPTOR	CF / ISO-K	Part No.	A	B	C
Stainless steel 304/-	63/63	<b>213-271</b>	90	1	1
	100/100	<b>213-272</b>	90	1	1
	160/160	<b>213-273</b>	90	1.5	1.5



ADAPTOR	DN ... ISO-K	Part No.	A	B
Aluminum 6082/-	63	<b>212-181</b>	51	76
	100	<b>212-182</b>	56	107
	160	<b>212-183</b>	56	156



SLEEVE WITH HOSE CLAMP	DN ... ISO-KF	Part No.	A	B	C	D	E
Sleeve: Elastomer CR	63	<b>212-186</b>	70	14	24	75	120
Hose clamp: Stainless steel 430/-	100	<b>212-187</b>	72	8	26	106	150
Max. internal pressure: 1 bar	160	<b>212-188</b>	72	8	26	155	200





---

**GLOBAL HEADQUARTERS:**

Two Technology Place, East Syracuse, NY 13057 USA  
Tel: +1.315.434.1100 Fax: +1.315.437.3803 E-mail: reachus@inficon.com

**UNITED STATES FRANCE GERMANY LIECHTENSTEIN SWITZERLAND UNITED KINGDOM CHINA JAPAN KOREA SINGAPORE TAIWAN**

Visit our website for contact information and other sales offices worldwide. [www.inficon.com](http://www.inficon.com)  
Due to our continuing program of product improvements, specifications are subject to change without notice.  
qiba13e1-a (2005-04) ©2005 INFICON Inc.