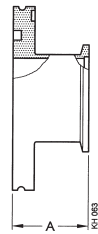


# TRANSITION PIECES

## ISO-KF Small Flange Components

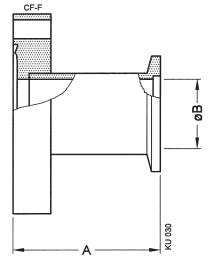
### ADAPTER ISO-KF/ISO-K

	ISO-KF/ISO-K	Part No.	A
Aluminum 6082/-	40/63	<b>212-171</b>	40
	50/63	<b>212-172</b>	45
Stainless steel 303/1.4305	40/63	<b>212-173</b>	40
	50/63	<b>212-174</b>	45
	40/100	<b>212-175</b>	40



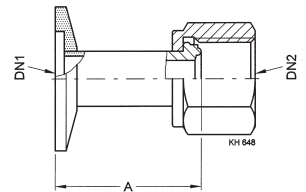
### ADAPTER ISO-KF/CF-F

	ISO-KF/CF-F	Part No.	A	B
Stainless steel 304/1.4301	16/16	<b>213-251</b>	35	16
	25/16	<b>213-252</b>	35	16
	16/40	<b>213-254</b>	30	16
	25/40	<b>213-255</b>	30	26
	40/40	<b>213-256</b>	50	37
	40/63	<b>213-259</b>	35	41
	40/100	<b>213-262</b>	50	41



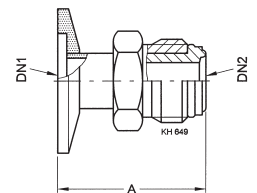
### ADAPTER ISO-KF/VCR FEMALE

	ISO-KF/VCR	Part No.	A
Flange: Stainless steel 304/1.4301	16/ 1/4"	<b>211-359</b>	35.8
Nut: Stainless steel 316L/1.4435	25/ 1/4"	<b>211-480</b>	35.8
	25/ 1/2"	<b>211-360</b>	40.6
Width across flats in inch	40/ 3/4"	<b>211-361</b>	53.3



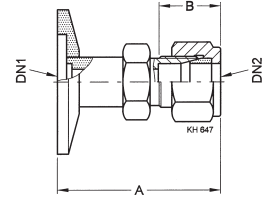
### ADAPTER ISO-KF/VCR MALE

	ISO-KF/VCR	Part No.	A
Flange: Stainless steel 304/1.4301	16/ 1/4"	<b>211-362</b>	35.8
Nut: Stainless steel 316L/1.4435	25/ 1/4"	<b>211-481</b>	35.8
	25/ 1/2"	<b>211-363</b>	40.6
Width across flats in inch	40/ 3/4"	<b>211-364</b>	53.3



## ADAPTER ISO-KF/SWAGelok

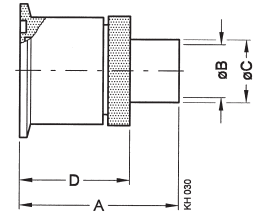
	ISO-KF/Swagelok	Part No.	A	B
Flange: Stainless steel 304/1.4301	16/6 mm	<b>211-356</b> <sup>1)</sup>	37	15.3
Nut: Stainless steel 316L/1.4435	25/10 mm	<b>211-357</b> <sup>1)</sup>	45	17.2
	40/16 mm	<b>211-358</b> <sup>1)</sup>	53	24.4
	16/ 1/8"	<b>211-476</b> <sup>2)</sup>	34.5	12.7
	25/ 1/4"	<b>211-477</b> <sup>2)</sup>	37	15.3
	40/ 1/4"	<b>211-478</b> <sup>2)</sup>	37	15.3
	40/ 1/2"	<b>211-479</b> <sup>2)</sup>	47.5	22.8



1) Width across flats metric (SI)  
2) Width across flats in inch

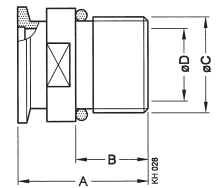
## GLASS TUBE CONNECTION

	DN ... ISO-KF	Part No.	A	B	C	D
Flange: Aluminum 6012/-	10	<b>211-351</b>	50	8	10	30
Sealing: Elastomer FPM	40	<b>211-353</b>	65	22	26	45
Tube: Glas Pyrex						



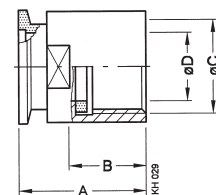
## SCREW-IN FLANGE

	ISO-KF/DN	Part No.	A	B	C	D
Flange: Stainless steel 304/1.4301	10/ G 3/8"	<b>211-366</b>	35	15	G 3/8"	12
Sealing: Elastomer FPM	16/ G 1/2"	<b>211-367</b>	35	15	G 1/2"	16
	25/ G 1"	<b>211-368</b>	45	25	G1"	25
Width across flats metric (SI)	40/ G 1 1/2"	<b>211-369</b>	50	30	G 1 1/2"	41



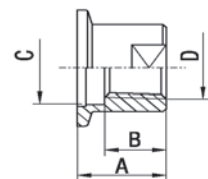
## SCREW-ON FLANGE

	ISO-KF/DN	Part No.	A	B	C	D
Flange: Stainless steel 304/1.4301	10/ G 3/8"	<b>211-376</b>	35	15	G 3/8"	10
Sealing: Elastomer FPM	16/ G 1/2"	<b>211-377</b>	35	15	G 1/2"	15
	25/ G 1"	<b>211-378</b>	45	25	G 1"	24
Width across flats metric (SI)	40/ G 1 1/2"	<b>211-379</b>	50	30	G 1 1/2"	38



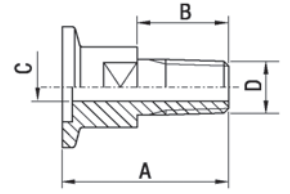
## ADAPTER ISO-KF/NPT FEMALE

	ISO-KF/NPT	Part No.	A	B	C	D	
Stainless steel 303	16/ 1/8"	<b>211-566</b>	19	8	12	1/8-27 NPT	
	16/ 1/4"	<b>211-567</b>	19	13	15	1/4-18 NPT	
	25/ 1/8"	<b>211-569</b>	19	10	12	1/8-27 NPT	
	25/ 1/4"	<b>211-570</b>	19	13	15	1/4-18 NPT	
	25 / 1/2"	<b>211-571</b>	26	18	25	1/2-14 NPT	
	25 / 1"	<b>211-572</b>	42	24	25	1-11 1/2 NPT	
	40 / 1/4"	<b>211-574</b>	19	13	15	1/4-18 NPT	
	40 / 1/2"	<b>211-575</b>	26	18	25	1/2-14 NPT	
	Width across flats in inch	40 / 1"	<b>211-576</b>	26	23	41	1-11 1/2 NPT



## ADAPTER ISO-KF/NPT MALE

	ISO-KF/NPT	Part No.	A	B	C	D	
Stainless steel 303 / 1.4305	16/ 1/8"	<b>211-551</b>	40	17	5	1/8-27 NPT	
	16/ 1/4"	<b>211-552</b>	40	22	7	1/4-18 NPT	
	25/ 1/8"	<b>211-554</b>	40	17	5	1/8-27 NPT	
	25/ 1/4"	<b>211-555</b>	40	22	7	1/4-18 NPT	
	25 / 1/2"	<b>211-556</b>	50	30	14	1/2-14 NPT	
	25 / 1"	<b>211-557</b>	60	32	25	1-11 1/2 NPT	
	40 / 1/4"	<b>211-559</b>	40	21	7	1/4-18 NPT	
	40 / 1/2"	<b>211-560</b>	50	30	14	1/2-14 NPT	
	40 / 1"	<b>211-561</b>	60	33	25	1-11 1/2 NPT	
	40 / 1 1/4"	<b>211-562</b>	50	31.5	32	1 1/4-11 1/2 NPT	
	40 / 1 1/2"	<b>211-563</b>	50	28	32	1 1/2-11 1/2 NPT	
	Width across flats in inch	40 / 2"	<b>211-564</b>	50	27	40	2-11 1/2 NPT



### GLOBAL HEADQUARTERS:

Two Technology Place, East Syracuse, NY 13057 USA  
Tel: +1.315.434.1100 Fax: +1.315.437.3803 E-mail: reachus@inficon.com

UNITED STATES FRANCE GERMANY LIECHTENSTEIN SWITZERLAND UNITED KINGDOM CHINA JAPAN KOREA SINGAPORE TAIWAN

Visit our website for contact information and other sales offices worldwide. [www.inficon.com](http://www.inficon.com)  
Due to our continuing program of product improvements, specifications are subject to change without notice.  
qiba06e1-a (2005-04) ©2005 INFICON Inc.