

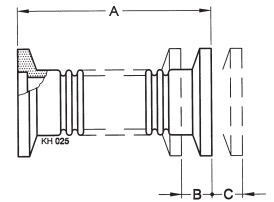
BELLOWS/HOSE WITH FLANGES

ISO-KF Small Flange Components

BELLOWS

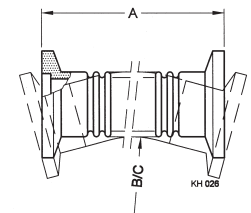
	DN ... ISO-KF	Part No.	A	B	C	D
Flanges: Stainless steel 304/1.4301	10	211-326	70	3.5	3	23°
Bellow: Stainless steel 316Ti/-	16	211-327	70	6.4	4.1	21°
	25	211-328	80	8	5	17°
	40	211-329	100	11	7	15°
	50	211-330	100	10	6	15°

A = unstressed length
D = max. deviation from axis
Max. internal pressure: 4 bar



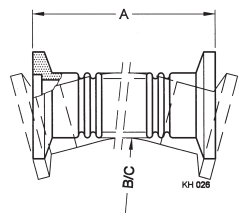
METAL HOSE

	DN ... ISO-KF	Part No.	A	B	C
Flanges: Stainless Steel 304/1.4301	10	211-331	250	70	32
Bellow: Stainless steel 316Ti/-	10	211-332	500	70	32
	10	211-333	750	70	32
	10	211-334	1000	70	32
	16	211-335	250	70	50
	16	211-336	500	70	50
	16	211-337	750	70	50
	16	211-338	1000	70	50
	25	211-339	250	100	60
	25	211-340	500	100	60
	25	211-341	750	100	60
	25	211-342	1000	100	60
	40	211-343	250	130	100
	40	211-344	500	130	100
	40	211-345	750	130	100
	40	211-346	1000	130	100
	50	211-347	250	200	130
Max. internal pressure: 4 bar	50	211-348	500	200	130
B = radius for multiple bending	50	211-349	750	200	130
C = radius for single bend	50	211-350	1000	200	130



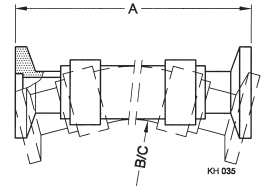
METAL HOSE FLEXIBLE

	DN ... ISO-KF	Part No.	A	B	C
Flanges: Stainless steel 304/1.4301	16	211-515	250	40	25
Bellow: Stainless steel 316Ti/-	16	211-516	500	40	25
	25	211-519	250	55	36
	25	211-520	500	55	36
	40	211-523	250	90	60
	40	211-524	500	90	60
Max. internal pressure: 2 bar	50	211-527	250	100	65
B = radius for multiple bending	50	211-528	500	100	65
C = radius for single bend	50	211-528	500	100	65



PVC HOSE

	DN ... ISO-KF	Part No.	A	B	C
Hose: PVC with cast in steel spiral	16	211-406	500	130	65
Nipple: Aluminum 6012/3.0615	16	211-407	1000	130	65
Hose clamp: Stainless steel 430/-	25	211-408	500	200	100
	25	211-409	1000	200	100
B = radius for multiple bending	40	211-410	500	260	130
C = radius for single bend	40	211-411	1000	260	130



GLOBAL HEADQUARTERS:

Two Technology Place, East Syracuse, NY 13057 USA
 Tel: +1.315.434.1100 Fax: +1.315.437.3803 E-mail: reachus@inficon.com

UNITED STATES FRANCE GERMANY LIECHTENSTEIN SWITZERLAND UNITED KINGDOM CHINA JAPAN KOREA SINGAPORE TAIWAN

Visit our website for contact information and other sales offices worldwide. www.inficon.com
 Due to our continuing program of product improvements, specifications are subject to change without notice.
 qiba05e1 (2004-05) ©2003 INFICON Inc.