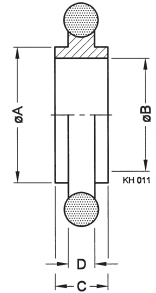


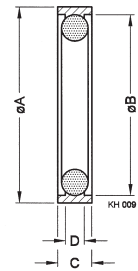
# SEALS

## ISO-KF Small Flange Components

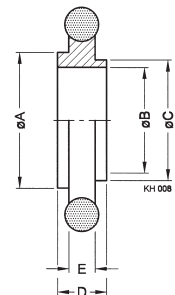
<b>CENTERING RING</b>	DN ... ISO-KF	Part No.	A	B	C	D
Ring: Aluminum 2011/- Seal: Elastomer CR	10	<b>211-051</b>	12	10	8	3.9
	16	<b>211-052</b>	17	16	8	3.9
	20	<b>211-053</b>	22	20	8	3.9
	25	<b>211-054</b>	26	25	8	3.9
	32	<b>211-055</b>	34	32	8	3.9
	40	<b>211-056</b>	41	40	8	3.9
	50	<b>211-057</b>	52	50	8	3.9
Ring: Aluminum 2011/- Seal: Elastomer FPM	10	<b>211-058</b>	12	10	8	3.9
	16	<b>211-059</b>	17	16	8	3.9
	20	<b>211-060</b>	22	20	8	3.9
	25	<b>211-061</b>	26	25	8	3.9
	32	<b>211-062</b>	34	32	8	3.9
	40	<b>211-063</b>	41	40	8	3.9
	50	<b>211-064</b>	52	50	8	3.9
Ring: Stainless steel 303/1.4305- Seal: Elastomer FPM	10	<b>211-065</b>	12	10	8	3.9
	16	<b>211-066</b>	17	16	8	3.9
	20	<b>211-067</b>	22	20	8	3.9
	25	<b>211-068</b>	26	25	8	3.9
	32	<b>211-069</b>	34	32	8	3.9
	40	<b>211-070</b>	41	40	8	3.9
	50	<b>211-071</b>	52	50	8	3.9



<b>EXTERNAL CENTERING RING</b>	DN ... ISO-KF	Part No.	A	B	C	D
Ring: Aluminum 2011/- Seal: Elastomer CR	10-16	<b>211-081</b>	32	30.2	7	3.9
	20-25	<b>211-082</b>	42	40.2	7	3.9
	32-40	<b>211-083</b>	57	55.2	7	3.9
	50	<b>211-084</b>	77	75.2	7	3.9
Ring: Aluminum 2011/- Seal: Elastomer FPM	10-16	<b>211-085</b>	32	30.2	7	3.9
	20-25	<b>211-086</b>	42	40.2	7	3.9
	32-40	<b>211-087</b>	57	55.2	7	3.9
	50	<b>211-088</b>	77	75.2	7	3.9

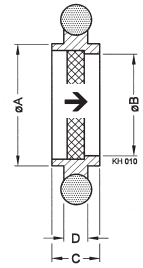


<b>REDUCING CENTERING RING</b>	DN ... ISO-KF	Part No.	A	B	C	D	E
Ring: Aluminum 2011/- Seal: Elastomer CR	10 / 16	<b>211-072</b>	17	10	12	8	3.9
	20 / 25	<b>211-073</b>	26	20	22	8	3.9
	32 / 40	<b>211-074</b>	41	32	34	8	3.9
Ring: Aluminum 2011/- Seal: Elastomer FPM	10 / 16	<b>211-075</b>	17	10	12	8	3.9
	20 / 25	<b>211-076</b>	26	20	22	8	3.9
	32 / 40	<b>211-077</b>	41	32	34	8	3.9
Ring: Stainless steel 303/1.4305 Seal: Elastomer FPM	10 / 16	<b>211-078</b>	17	10	12	8	3.9
	20 / 25	<b>211-079</b>	26	20	22	8	3.9
	32 / 40	<b>211-080</b>	41	32	34	8	3.9



## CENTERING RING WITH FILTER

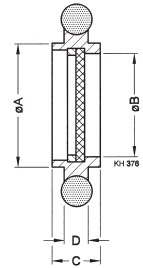
	DN ... ISO-KF	Part No.	A	B	C	D	E*
Ring: Stainless steel 303/1.4305	10	<b>211-089</b>	12	8	8	3.9	0.5m <sup>3</sup> /h
Seal: Elastomer FPM	16	<b>211-090</b>	17	14	8	3.9	1.2m <sup>3</sup> /h
Filter: Stainless steel 316L/1.4435	25	<b>211-092</b>	26	23	8	3.9	4.2m <sup>3</sup> /h
Pore size 0.02 mm	40	<b>211-094</b>	41	35.5	8	3.9	11.3m <sup>3</sup> /h
* Air at 0°C, 20 mbar differential pressure	50	<b>211-095</b>	52	48	8	3.9	18.1m <sup>3</sup> /h



➔ Recommended gas flow direction

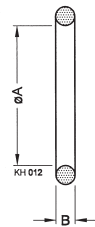
## CENTERING RING WITH FINE FILTER

	DN ... ISO-KF	Part No.	A	B	C	D
Inner ring: Stainless steel 303/1.4305	10	<b>211-096</b>	12	9	8	3.9
Snab ring: Stainless steel 304/1.4301	16	<b>211-097</b>	17	13	8	3.9
Sael: Elastomer FPM	25	<b>211-098</b>	26	22	8	3.9
Filter: Stainless steel 316L/1.4435	40	<b>211-099</b>	41	35.5	8	3.9
Pore size 0.004 mm	50	<b>211-100</b>	52	45.7	8	3.9
Degree of seperation at 0.001 mm up to 98%						



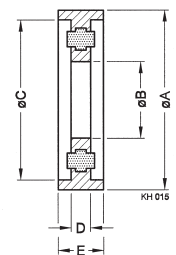
## O-RING

	DN ... ISO-KF	Part No.	A	B	Set of
Elastomer CR	10	<b>211-146</b>	15	5	10 pcs.
	16	<b>211-147</b>	18	5	10 pcs.
	20	<b>211-148</b>	25	5	10 pcs.
	25	<b>211-149</b>	28	5	10 pcs.
	32	<b>211-150</b>	40	5	10 pcs.
	40	<b>211-151</b>	42	5	10 pcs.
Elastomer FPM	50	<b>211-152</b>	55	5	10 pcs.
	10	<b>211-153</b>	15	5	10 pcs.
	16	<b>211-154</b>	18	5	10 pcs.
	20	<b>211-155</b>	25	5	10 pcs.
	25	<b>211-156</b>	28	5	10 pcs.
	32	<b>211-157</b>	40	5	10 pcs.
	40	<b>211-158</b>	42	5	10 pcs.
50	<b>211-159</b>	55	5	10 pcs.	

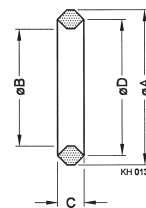


## INDIUM SEAL

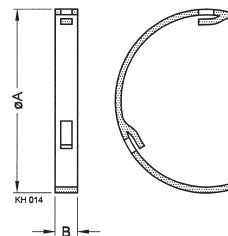
	DN ... ISO-KF	Part No.	A	B	C	D	E
Inner ring: Stainless steel 304/1.4301	10-16	<b>211-162</b>	32	18	30	3.9	7
Outer ring: Aluminum 5012/-	20-25	<b>211-163</b>	42	28	40	3.9	7
Seal: Indium	32-40	<b>211-164</b>	57	43	55	3.9	7
Working temperature: -196° to +60°C	50	<b>211-165</b>	77	63	75	3.9	7



<b>ALUMINUM SEAL</b>	DN ... ISO-KF	Part No.	A	B	C	D	With Support Ring
Aluminum anneated 6082/3.2315	10-16	<b>211-167</b>	25.6	19.6	4.5	22.6	211-171
	20-25	<b>211-168</b>	35.6	29.6	4.5	32.6	211-168
	32-40	<b>211-169</b>	50.6	44.6	4.5	47.6	211-173
Set of 3 pieces	50	<b>211-170</b>	65.6	59.6	4.5	62.6	211-174



<b>SUPPORT FOR ALUMINUM SEAL</b>	DN ... ISO-KF	Part No.	A	B	For Aluminum Seal
Stainless steel 301/1.4310	10-16	<b>211-171</b>	32	7	211-167
	20-25	<b>211-172</b>	42	7	211-168
	32-40	<b>211-173</b>	57	7	211-169
Reusable	50	<b>211-174</b>	77	7	211-170



**GLOBAL HEADQUARTERS:**

Two Technology Place, East Syracuse, NY 13057 USA  
 Tel: +1.315.434.1100 Fax: +1.315.437.3803 E-mail: reachus@inficon.com

UNITED STATES FRANCE GERMANY LIECHTENSTEIN SWITZERLAND UNITED KINGDOM CHINA JAPAN KOREA SINGAPORE TAIWAN

Visit our website for contact information and other sales offices worldwide. [www.inficon.com](http://www.inficon.com)  
 Due to our continuing program of product improvements, specifications are subject to change without notice.  
 qiba02e1-a (2005-04) ©2005 INFICON Inc.