

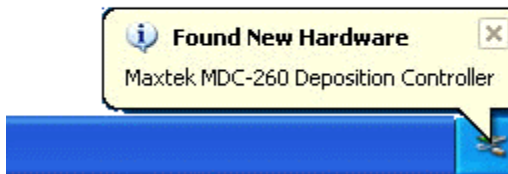


Technical Note: 10000318

Installing MDC-260 Driver

IMPORTANT NOTE:

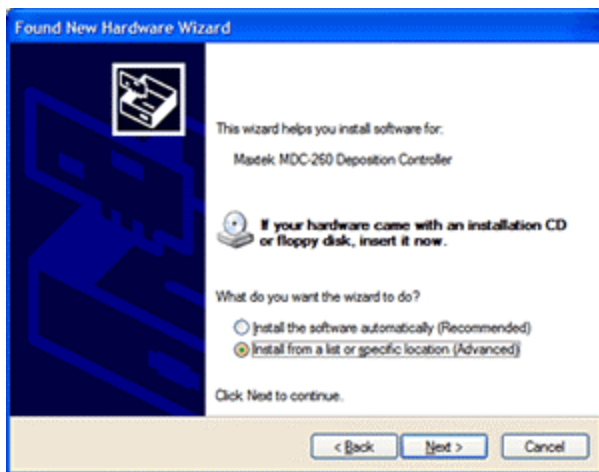
You must have administrative privileges on your computer to complete this procedure.
Contact your local Network Admin if you don't have
OR if you have any questions about your local security configuration.



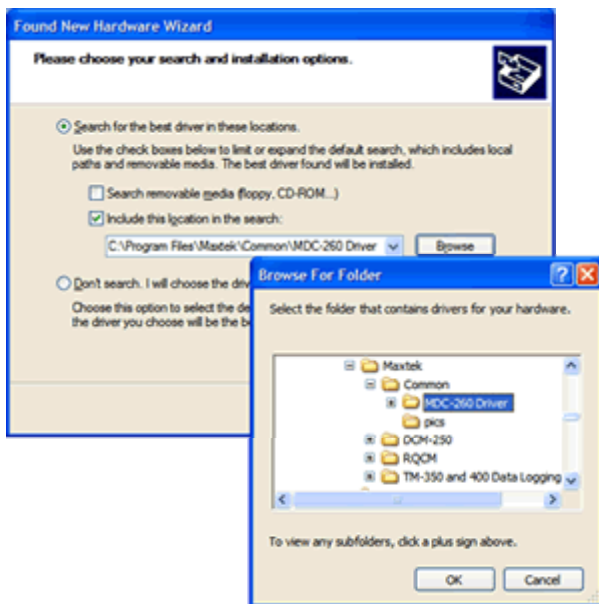
With the MDC-260 turned on and your computer waiting idle on the Windows desktop, plug the USB cable into your computer AND your MDC-260.



If you have Windows XP with Service Pack 2 installed, you may be prompted to search the Windows Update service for the latest driver. Choose "No, not this time" then click "Next" to continue.



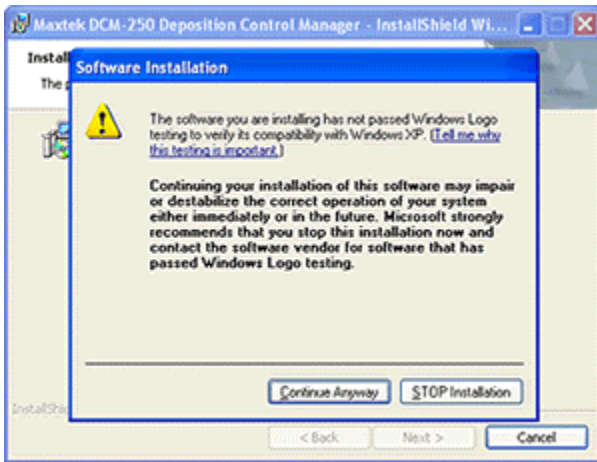
Windows will ask if you want to Automatically find the driver or Install from a list of drivers. If this is the first time that you are installing an MDC-260 on this computer, you will need to select the Advanced option. Otherwise you may choose to install the software Automatically.



Next, Windows asks you where to search for the MDC-260 driver. A copy of the driver is located in the 260driver subfolder on your DCM-250 Installation CD-ROM. There *may* be a copy on your hard drive here: "C:\Program Files\Maxtek\Common\MDC-260 Driver" (see note below).

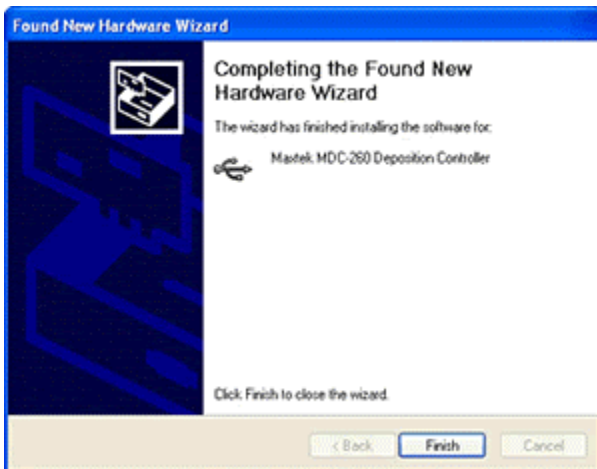
If you have the DCM-250 Installation CD-ROM, click Search removable media. Otherwise, click the Browse button and choose the folder where the driver is located. Click OK then Next to continue.

IMPORTANT NOTE: If the OK button is disabled, click Cancel, download and run [this file](#), then try again.



If you are prompted with a message that says that this driver "...has not passed Windows Logo testing..." then click "Continue Anyway".

This means that the driver has not been tested by Windows Hardware Quality Labs (WHQL) but does not necessarily mean that the driver will cause instabilities on your computer. We have tested this driver on Windows 98SE/ME/2000/XP and have never seen any instability directly related to this driver and its usage.



Click Finish to close the Wizard.

This dialog confirms that the MDC-260 has been successfully installed.

Document Title:	Installing MDC-260 Driver
Document ID:	10000318
Creation Date:	10/27/2005
Modified Date:	12/20/2005
Related Products:	MDC-260 , DCM-250
Product Line:	Thin Film / Vacuum
Notes:	